

# HI-ILS or LOC/DME RWY 18

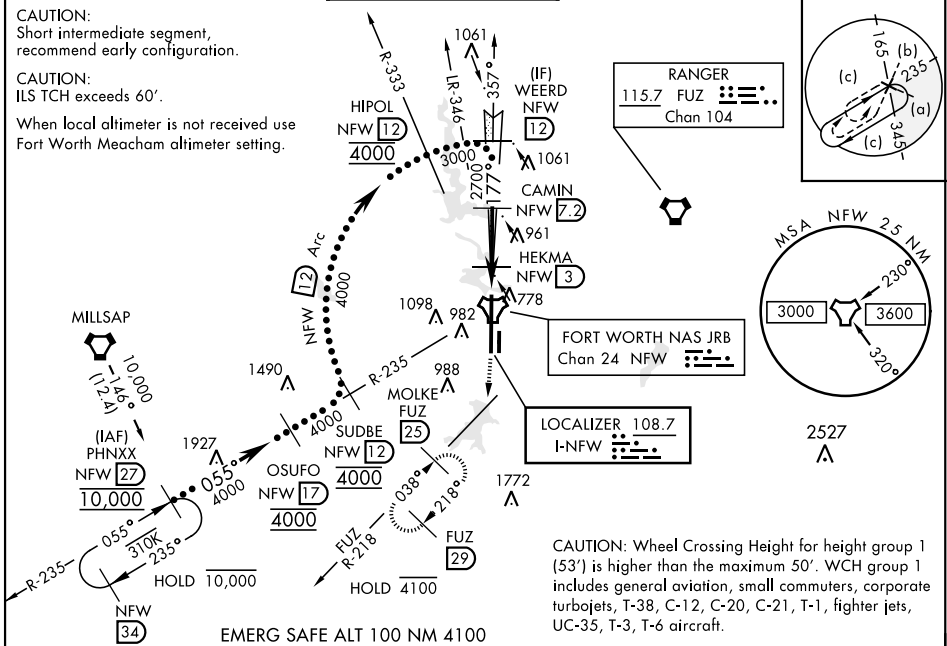
LOC I-NFW <b>108.7</b>	APCH CRS <b>177°</b>	Rwy Ldg <b>11,999</b> TDZE <b>636</b> Arpt Elev <b>650</b>	AL-160 [USN]	FORT WORTH NAS JRB (CARSWELL FLD) (KNFW)
---------------------------	-------------------------	---	--------------	--

TACAN required.

\* Circling not authorized E of Rwy 18-36.

MISSED APPROACH: Climb to 3000 heading 177° and FUZ VORTAC R-218 to MOLKE and hold. FUZ VORTAC required for missed approach.

ATIS* <b>351.675</b>	REGIONAL APP CON <b>125.8 257.95</b>	NAVY FORT WORTH TOWER* <b>120.950 269.325</b>	GND CON <b>121.675 279.575</b>	CLNC DEL <b>126.4 254.325</b>	ASR/PAR
-------------------------	---	--	-----------------------------------	----------------------------------	---------



SC-2, 16 JUN 2022 to 14 JUL 2022

SC-2, 16 JUN 2022 to 14 JUL 2022

3000 hdg 177° FUZ R-218	MOLKE FUZ 25 ↑ VDP NA when using FTW altimeter setting	ELEV 650	TDZE 636
CATEGORY	C	D	E
S-ILS 18	836-3/4	200 (200-3/4)	
S-LOC 18	1040-1 1/8	404 (400-1 1/8)	
CIRCLING*	1320-1 3/4 670 (700-1 3/4)	1320-2 670 (700-2)	1440-2 3/4 790 (800-2 3/4)
FORT WORTH MEACHAM ALTIMETER			
S-ILS 18	856-3/4	220 (300-3/4)	
S-LOC 18	1060-1 1/4	424 (500-1 1/4)	
CIRCLING*	1340-2 690 (700-2)	1340-2 1/4 690 (700-2 1/4)	1460-2 3/4 810 (900-2 3/4)

FORT WORTH, TEXAS 32° 46' N-97° 26' W FORT WORTH NAS JRB (CARSWELL FLD) (KNFW)

Amtd 2 25MAR21

# HI-ILS or LOC/DME RWY 18

