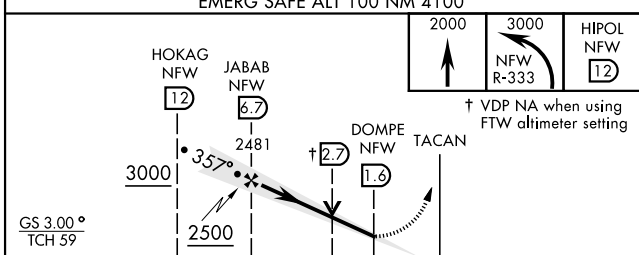
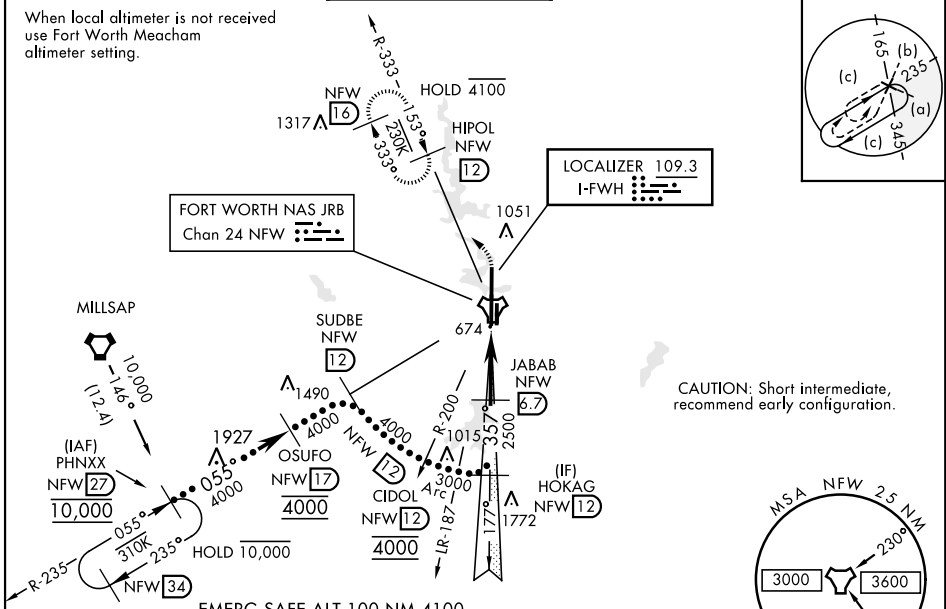


# HI-ILS or LOC/DME RWY 36

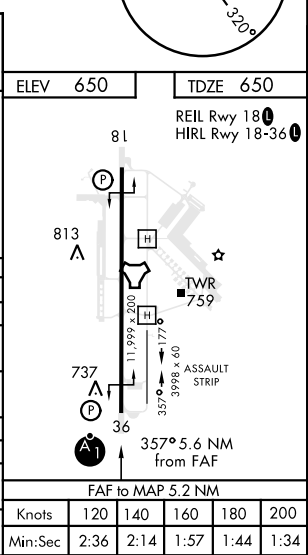
LOC I-FWH <b>109.3</b>	APCH CRS <b>357°</b>	Rwy ldg <b>11,999</b> TDZE <b>650</b> Arpt Elev <b>650</b>	AL-160 [USN]	FORT WORTH NAS JRB (CARSWELL FLD) (KNFW)
---------------------------	-------------------------	--	--------------	--

TACAN required. * When ALS inop, increase vis to 3/4 mile. ** When ALS inop, increase vis to 1 1/8 miles. Circling not authorized E of Rwy 18-36.	ALSF-1 	MISSED APPROACH: Climb to 2000, then climbing left turn to 3000 to intercept NFW TACAN R-333 to HIPOL and hold.
--	------------	---

ATIS* <b>351.675</b>	REGIONAL APP CON <b>125.8 257.95</b>	NAVY FORT WORTH TOWER* <b>120.950 269.325</b>	GND CON <b>121.675 279.575</b>	CLNC DEL <b>126.4 254.325</b>	ASR/PAR
-------------------------	---	--	-----------------------------------	----------------------------------	---------



	C	D	E
S-ILS 36*	850-1/2	200	(200-1/2)
S-LOC 36**	1200-1 1/8	550	(600-1 1/8)
CIRCLING***	1320-1 3/4 670 (700-1 3/4)	1320-2 670 (700-2)	1440-2 3/4 790 (800-2 3/4)
FORT WORTH MEACHAM ALTIMETER			
S-ILS 36*	870-1/2	220	(300-1/2)
S-LOC 36**	1220-1 1/4	570	(600-1 1/4)
CIRCLING***	1340-2 690 (700-2)	1340-2 1/4 690 (700-2 1/4)	1460-2 3/4 810 (900-2 3/4)



# HI-ILS or LOC/DME RWY 36

SC-2, 16 JUN 2022 to 14 JUL 2022

SC-2, 16 JUN 2022 to 14 JUL 2022