

HI-TACAN RWY 18

TACAN NFW Chan 24	APCH CRS 172°	Rwy Idg 11,999 TDZE 636 Arprt Elev 650	AL-160 [USN]	FORT WORTH NAS JRB (CARSWELL FLD) (KNFW)
-----------------------------	-------------------------	---	--------------	--

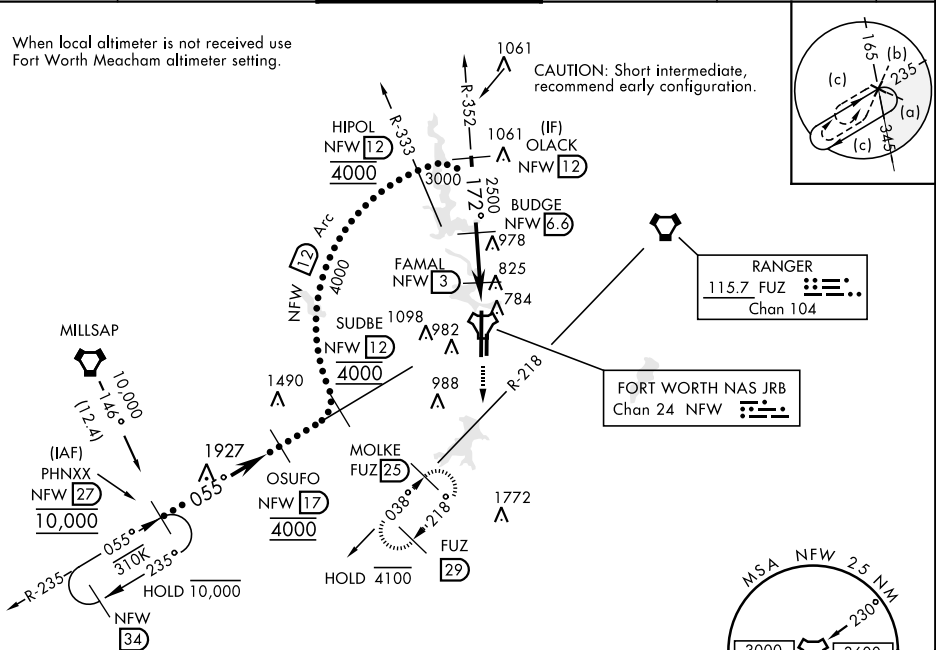
* Circling not authorized E of Rwy 18-36.

MISSED APPROACH: Climb to 3000 heading 172° and FUZ VORTAC R-218 to MOLKE and hold.

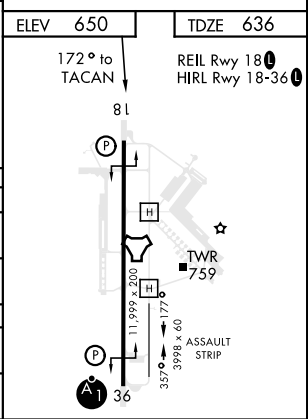
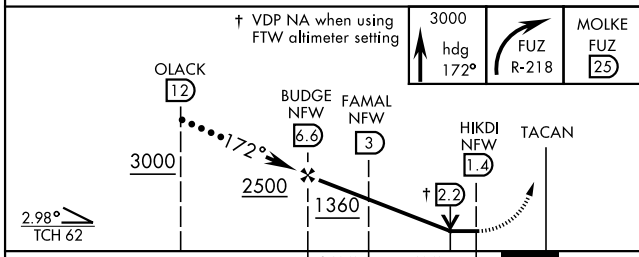
ATIS* 351.675	REGIONAL APP CON 125.8 257.95	NAVY FORT WORTH TOWER* 120.950 269.325	GND CON 121.675 279.575	CLNC DEL 126.4 254.325	ASR/PAR
-------------------------	---	--	-----------------------------------	----------------------------------	---------

When local altimeter is not received use Fort Worth Meacham altimeter setting.

CAUTION: Short intermediate, recommend early configuration.



EMERG SAFE ALT 100 NM 4100



ELEV	650	TDZE	636
172° to TACAN		REIL Rwy 18 HIRL Rwy 18-36	
CATEGORY	C	D	E
S-18	1120-1 ³ / ₈	484 (500-1 ³ / ₈)	
CIRCLING*	1320-1 ³ / ₄ 670 (700-1 ³ / ₄)	1320-2 670 (700-2)	1440-2 ³ / ₄ 790 (800-2 ³ / ₄)
FORT WORTH MEACHAM ALTIMETER			
S-18	1140-1 ³ / ₈	504 (500-1 ³ / ₈)	
CIRCLING*	1340-2 690 (700-1)	1340-2 ¹ / ₄ 690 (700-2 ¹ / ₄)	1460-2 ³ / ₄ 810 (900-2 ³ / ₄)

FORT WORTH, TEXAS 32°46'N-97°26'W FORT WORTH NAS JRB (CARSWELL FLD) (KNFW)

Amtd 1 18JUN20

HI-TACAN RWY 18

SC-2, 16 JUN 2022 to 14 JUL 2022

SC-2, 16 JUN 2022 to 14 JUL 2022