

FORT WORTH, TEXAS

ILS or LOC RWY 18

LOC I-NFW 108.7	APCH CRS 177°	Rwy Ldg 11,999 TDZE 636 Arpt Elev 650
---------------------------	-------------------------	---

AL-160 [USN] FORT WORTH NAS JRB (CARSWELL FLD) (KNFW)

TACAN required.
* Circling not authorized E of Rwy 18-36.

MISSED APPROACH: Climb to 3000 heading 177° and FUZ VORTAC R-218 to MOLKE and hold. FUZ VORTAC required for missed apch.

ATIS★ 351.675	REGIONAL APP CON 125.8 257.95	NAVY FORT WORTH TOWER★ 120.950 269.325	GND CON 121.675 279.575	CLNC DEL 126.4 254.325	ASR/PAR
-------------------------	---	--	-----------------------------------	----------------------------------	---------

CAUTION: ILS TCH exceeds 60'.

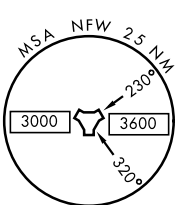
CAUTION: Wheel crossing height for height group 1 (53') is higher than the maximum 50'. Wheel crossing height group 1 includes general aviation, small commuters, corporate turboprops, T-38, C-12, C-20, C-21, T-1, fighter jets, UC-35, T-3, T-6 aircraft.

When local altimeter is not received, use Fort Worth Meacham altimeter setting.

MILLSAP
117.7 MQP Chan 124

(IAF) MOTZA FUZ 35.9

RANGER
115.7 FUZ Chan 104

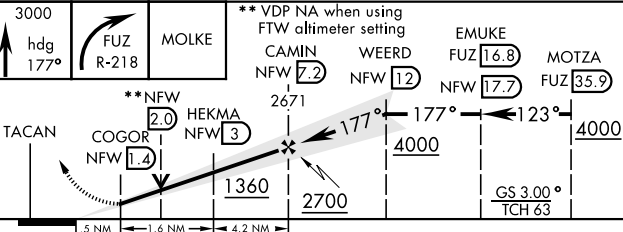


LOCALIZER 108.7 I-NFW

FORT WORTH NAS JRB Chan 24 NFW

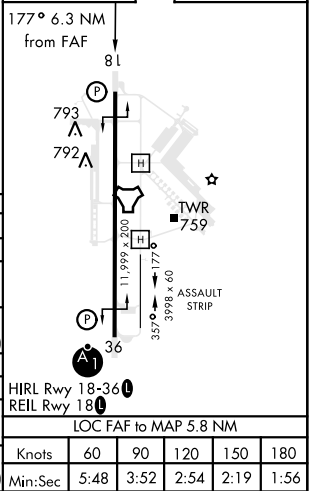


EMERG SAFE ALT 100 NM 4100



ELEV 650	TDZE 636
----------	----------

CATEGORY	A	B	C	D	E
S-ILS 18	836-3/4		200	(200-3/4)	
S-LOC 18	1040-1	404 (400-1)	1040-1 1/8	404	(400-1 1/8)
CIRCLING*	1240-1 590 (600-1)	1280-1 630 (700-1)	1320-1 3/4 670 (700-1 1/4)	1320-2 670 (700-2)	1440-2 3/4 790 (800-2 3/4)
FORT WORTH MEACHAM ALTIMETER					
S-ILS 18	856-3/4		220	(300-3/4)	
S-LOC 18	1060-1	424 (500-1)	1060-1 1/4	424	(500-1 1/4)
CIRCLING*	1260-1 610 (700-1)	1300-1 650 (700-1)	1340-2 690 (700-2)	1340-2 1/4 690 (700-2 1/4)	1460-2 3/4 810 (900-2 3/4)



FORT WORTH, TEXAS 32°46'N-97°26'W FORT WORTH NAS JRB (CARSWELL FLD) (KNFW)

Amdt 2 25MAR21

ILS or LOC RWY 18

SC-2, 16 JUN 2022 TO 14 JUL 2022

SC-2, 16 JUN 2022 TO 14 JUL 2022

LOC FAF to MAP 5.8 NM					
Knots	60	90	120	150	180
Min:Sec	5:48	3:52	2:54	2:19	1:56