

FORT WORTH, TEXAS

RNAV (GPS) RWY 36

FORT WORTH NAS JRB (CARSWELL FLD) (KNFW)

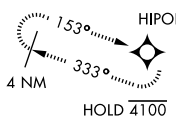
WAAS CH 49487 W36A	APCH CRS 357°	Rwy Idg 11,999 TDZE 650 Arprt Elev 650
--	-------------------------	---

AL-160 [USN]

<p>▼ * When ALS inop, increase vis to ¾ mile. ** When ALS inop, increase CAT AB vis to 1 mile, CAT CD vis to 1½ miles.</p>	<p>ALSIF-1 </p>	<p>MISSED APPROACH: Climb to 1700, then climbing left turn to 3000 direct HIPOL and hold.</p>
--	---------------------	---

<p>ATIS* 351.675</p>	<p>REGIONAL APP CON 125.8 257.95</p>	<p>NAVY FORT WORTH TOWER* 120.950 269.325</p>	<p>GND CON 121.675 279.575</p>	<p>CLNC DEL 126.4 254.325</p>	<p>ASR/PAR</p>
---------------------------------	---	--	---	--	----------------

*** When ALS inop, increase vis to 1½ miles, Baro VNAV NA when local altimeter not received.
**** Circling not authorized E of Rwy 18-36.

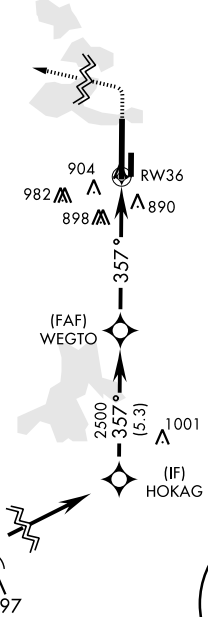


DME/DME RNP-0.3 NA

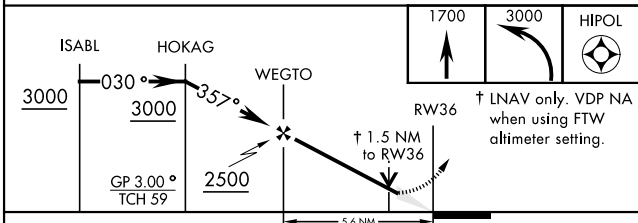
When local altimeter is not received use Fort Worth Meacham altimeter setting.

For uncompensated BaroVNAV systems, LNAV/VNAV NA below -16°C(3°F) or above 54°C(130°F).

CAUTION: Short intermediate, recommend early configuration.

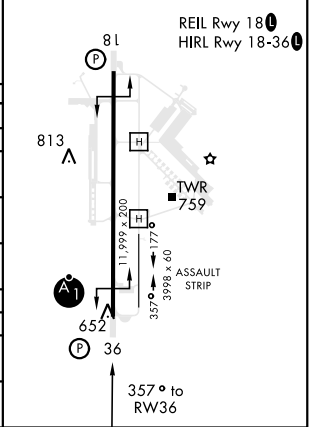


EMERG SAFE ALT 100NM 4100



CATEGORY	A	B	C	D
LPV DA*	850-½		200	(200-½)
LNAV MDA**	1200-½	550 (600-½)	1200-1¼	550 (600-1½)
LNAV/VNAV DA***	1199-1½		549	(600-1½)
CIRCLING****	1240-1 590 (600-1)	1280-1 630 (700-1)	1320-1¾ 670 (700-1¾)	1320-2 670 (700-2)
FORT WORTH MEACHAM ALTIMETER				
LPV DA*	870-½		220	(300-½)
LNAV MDA**	1220-½	570 (600-½)	1220-1¼	570 (600-1¼)
CIRCLING****	1260-1 610 (700-1)	1300-1 650 (700-1)	1340-2 690 (700-2)	1340-2¼ 690 (700-2¼)

ELEV 650	TDZE 650
----------	----------



SC-2, 16 JUN 2022 to 14 JUL 2022

SC-2, 16 JUN 2022 to 14 JUL 2022

FORT WORTH, TEXAS

32°46'N-97°26'W

FORT WORTH NAS JRB (CARSWELL FLD) (KNFW)

Amdt 1 08OCT20

RNAV (GPS) RWY 36