

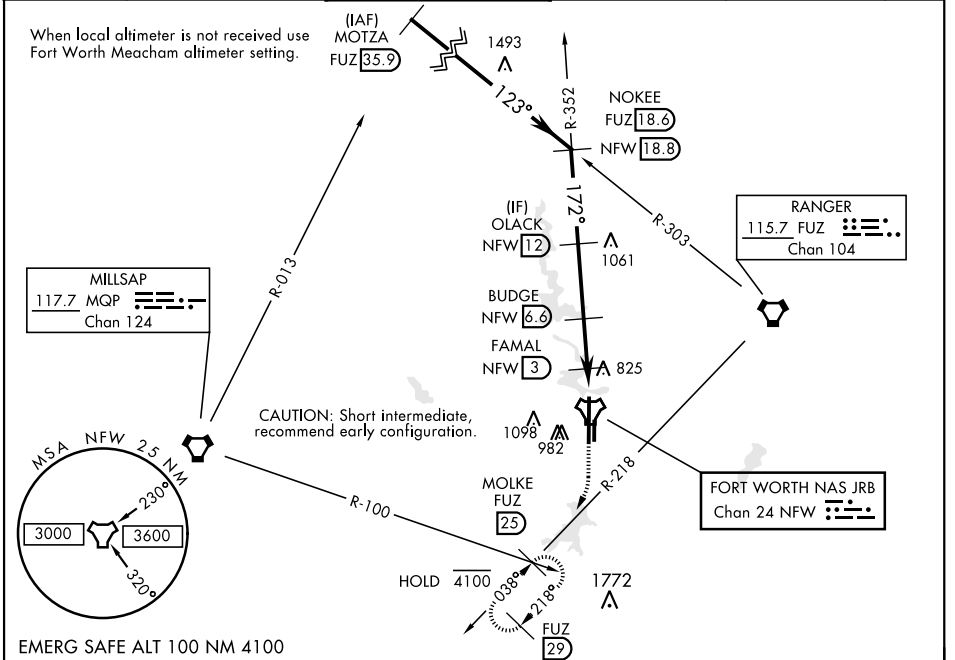
FORT WORTH, TEXAS

# TACAN RWY 18

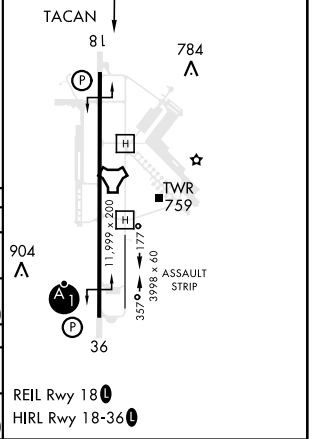
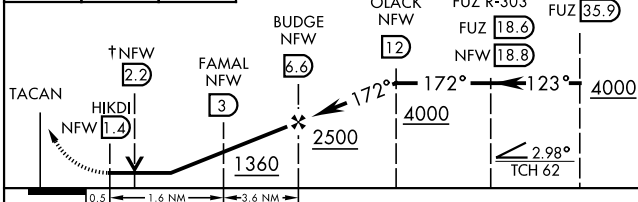
TACAN NFW Chan <b>24</b>	APCH CRS <b>172°</b>	Rwy Idg <b>11,999</b> TDZE <b>636</b> Arpt Elev <b>650</b>	AL-160 [USN] FORT WORTH NAS JRB (CARSWELL FLD) (KNFW)
-----------------------------	-------------------------	--	---

▼ \*Circling not authorized E of Rwy 18-36. MISSED APPROACH: Climb to 3000 heading 172° and FUZ VORTAC R-218 to MOLKE and hold.

ATIS* <b>351.675</b>	REGIONAL APP CON <b>125.8 257.95</b>	NAVY FORT WORTH TOWER* <b>120.950 269.325</b>	GND CON <b>121.675 279.575</b>	CLNC DEL <b>126.4 254.325</b>	ASR/ PAR
-------------------------	---	--	-----------------------------------	----------------------------------	-------------



3000 ↑ hdg 172°	FUZ R-218	MOLKE	↑ VDP NA when using FTW altimeter setting	ELEV 650	TDZE 636
-----------------------	--------------	-------	---	----------	----------



CATEGORY	A	B	C	D	E
S-18	1120-1 484 (500-1)		1120-1 <sup>3</sup> / <sub>8</sub> 484 (500-1 <sup>3</sup> / <sub>8</sub> )		
CIRCLING*	1240-1 590 (600-1)	1280-1 630 (700-1)	1320-1 <sup>3</sup> / <sub>4</sub> 670 (700-1 <sup>3</sup> / <sub>4</sub> )	1320-2 670 (700-2)	1440-2 <sup>3</sup> / <sub>4</sub> 790 (800-2 <sup>3</sup> / <sub>4</sub> )
FORT WORTH MEACHAM ALTIMETER					
S-18	1140-1 504 (500-1)		1140-1 <sup>3</sup> / <sub>8</sub> 504 (500-1 <sup>3</sup> / <sub>8</sub> )		
CIRCLING*	1260-1 610 (700-1)	1300-1 650 (700-1)	1340-2 690 (700-2)	1340-2 <sup>1</sup> / <sub>4</sub> 690 (700-2 <sup>1</sup> / <sub>4</sub> )	1460-2 <sup>3</sup> / <sub>4</sub> 810 (900-2 <sup>3</sup> / <sub>4</sub> )

FORT WORTH, TEXAS 32°46'N-97°26'W FORT WORTH NAS JRB (CARSWELL FLD) (KNFW)

Amtd 1 18JUN20

# TACAN RWY 18

SC-2, 16 JUN 2022 to 14 JUL 2022

SC-2, 16 JUN 2022 to 14 JUL 2022