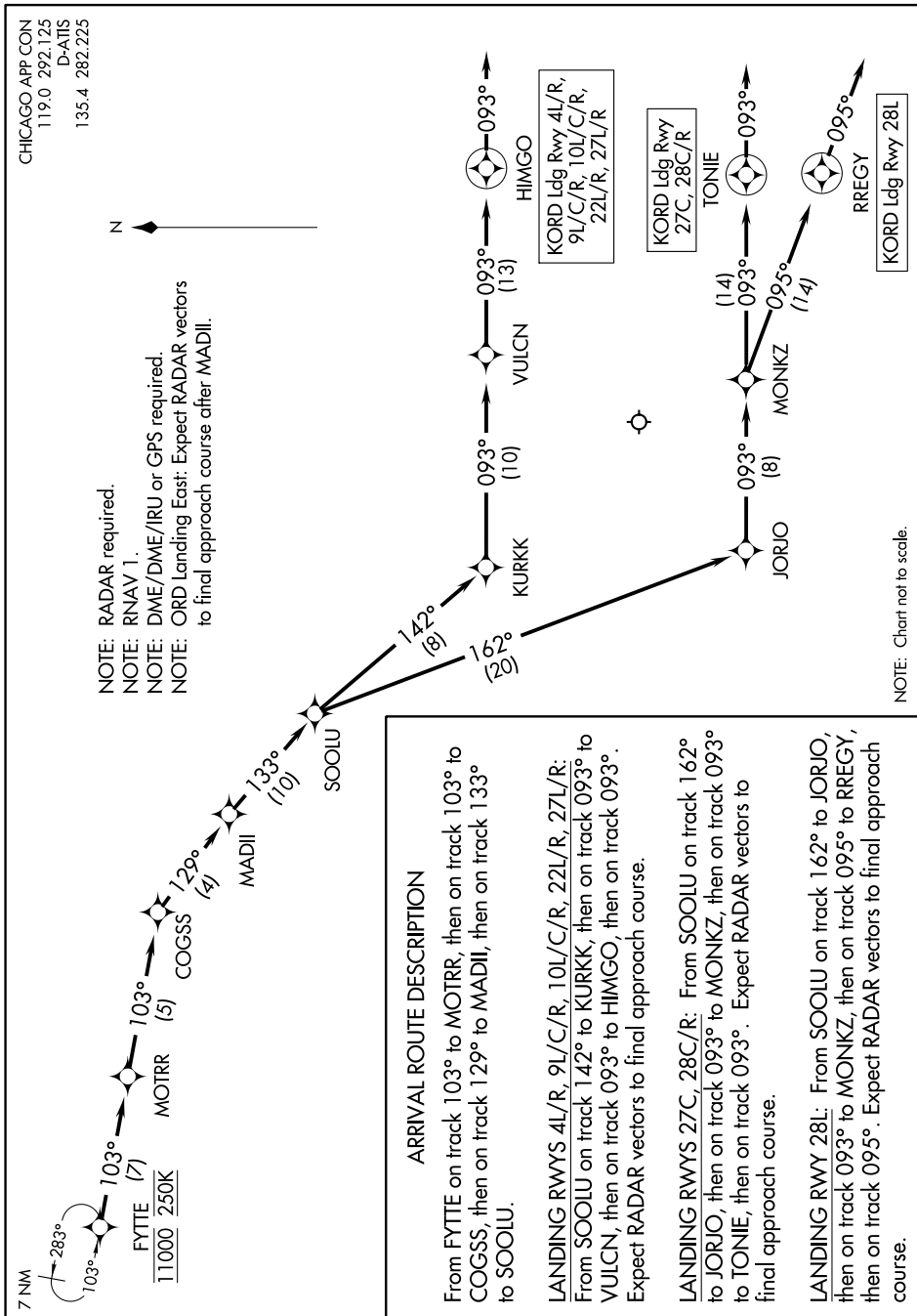


# FYTTE SEVEN ARRIVAL (RNAV) Arrival Routes

EC-3, 16 JUN 2022 to 14 JUL 2022



CHICAGO APP CON  
119.0 292.125  
D-ATIS  
135.4 282.225

NOTE: RADAR required.  
NOTE: RNAV 1.  
NOTE: DME/DME/IRU or GPS required.  
NOTE: ORD Landing East: Expect RADAR vectors to final approach course after MADII.

7 NM



KORD Ldg Rwy 4L/R,  
9L/C/R, 10L/C/R,  
22L/R, 27L/R

KORD Ldg Rwy  
27C, 28C/R

KORD Ldg Rwy 28L

NOTE: Chart not to scale.

EC-3, 16 JUN 2022 to 14 JUL 2022