

LOC/DME I-UYJ 111.9 Chan 56	APP CRS 273°	Rwy ldg 11245 TDZE 653 Apt Elev 680
--	------------------------	--

ILS RWY 27C (SA CAT I)

CHICAGO O'HARE INTL (ORD)

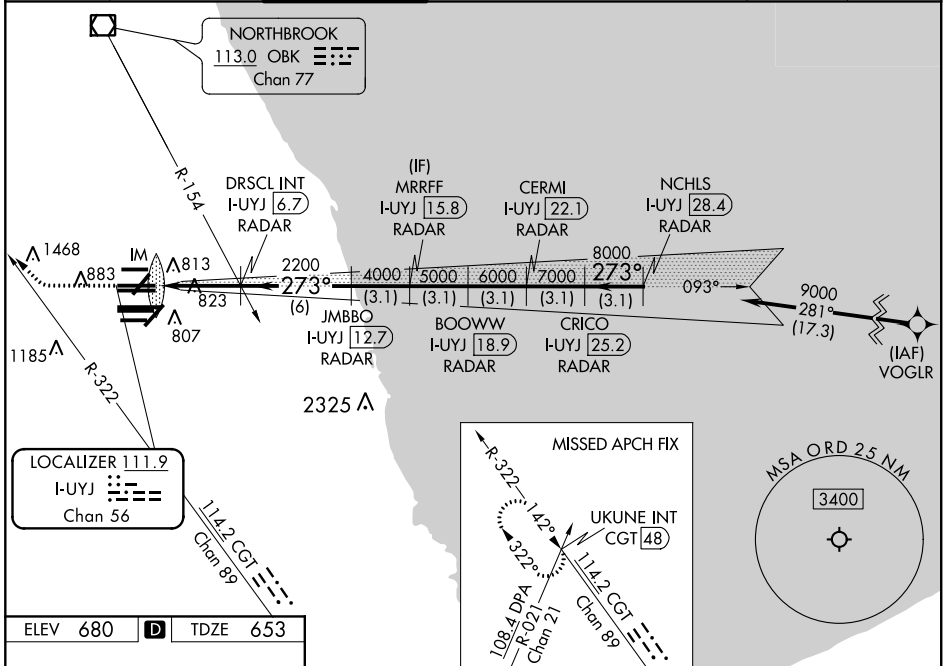
From VOGLR: RNAV 1-GPS required. Aircraft not GPS equipped - RADAR required for procedure entry. DME or RADAR required.

Simultaneous approach authorized. Requires specific OPSPEC, MSPEC, or LOA approval and use of HUD to DH.

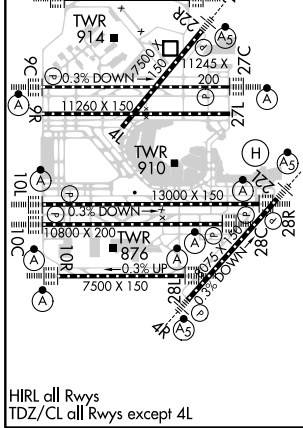
ALSF-2

MISSED APPROACH: Climb to 1100 then climbing right turn to 4000 on heading 290° and CGT R-322 to UKUNE INT/CGT 48 DME and hold.

D-ATIS 135.4 282.225	CHICAGO APP CON 119.0 292.125	O'HARE TOWER 121.15 348.0	GND CON (TWR NORTH) 124.125 (TWR SOUTH) 118.05 (ALL TWRs) 226.675	(TWR CENTER) (OBND) 121.75 (IBND) 121.9	CLNC DEL 121.6	CPDLC
--	---	-------------------------------------	---	--	--------------------------	-------



ELEV 680	D	TDZE 653
----------	----------	----------



1100	4000	CGT R-322	UKUNE INT	VGSI and ILS glidepath not coincident (VGSI Angle 3.00/TCH 75).	NCHLS I-UYJ 28.4 RADAR
hdg 290°					CERMI I-UYJ 22.1 RADAR
					CRICO I-UYJ 25.2 RADAR
					BOOWW I-UYJ 18.9 RADAR
					JMBBO I-UYJ 12.7 RADAR
					DRSCL INT I-UYJ 6.7 RADAR
					IM
					2200
					4000
					5000
					6000
					7000
					8000
					9000
					GS 3.00° TCH 56
					3.1 NM 3.1 NM 3.1 NM 3.1 NM 3.1 NM
CATEGORY	A	B	C	D	
S-ILS 27C	RA 158/14		150 DA 803		

SA CATEGORY I ILS - SPECIAL AIRCREW & AIRCRAFT CERTIFICATION REQUIRED

EC-3, 16 JUN 2022 to 14 JUL 2022

EC-3, 16 JUN 2022 to 14 JUL 2022