

LOC/DME I-IAC 110.5 Chan 42	APP CRS 273°	Rwy Idg 10260 TDZE 654 Apt Elev 680
---	------------------------	--

ILS RWY 27L (CAT II & III)

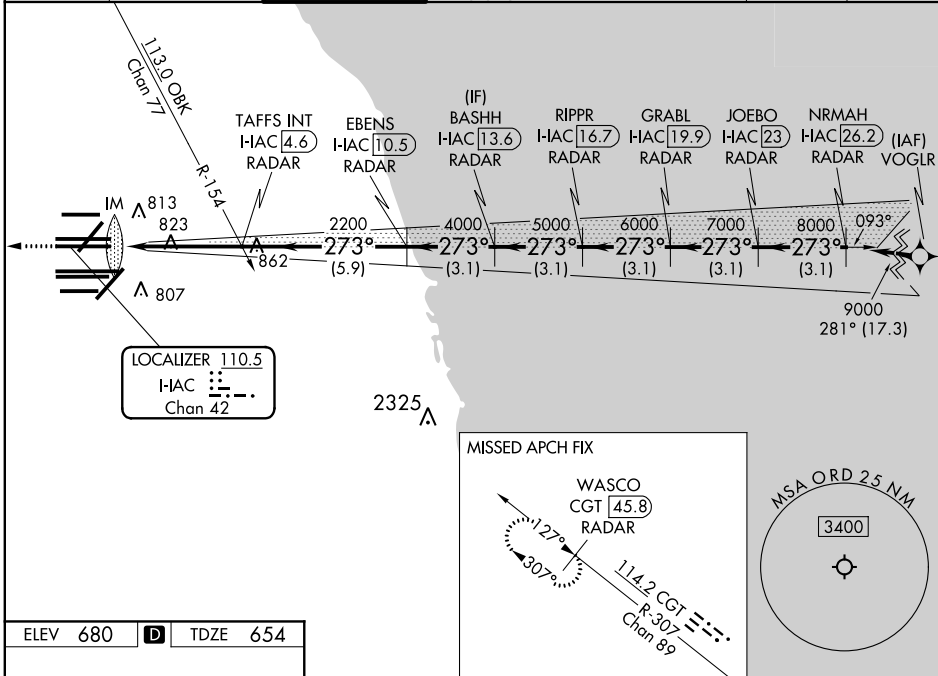
CHICAGO O'HARE INTL (ORD)

From VOGLR: RNAV 1-GPS required. Aircraft not GPS equipped - RADAR required for procedure entry. DME or RADAR required.

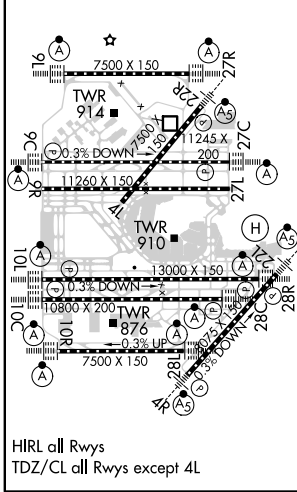
Simultaneous approach authorized.

MISSED APPROACH: Climb to 1200 then climb to 4000 on heading 265° and on CGT VORTAC R-307 to WASCO/CGT 45.8 DME/RADAR and hold.

D-ATIS 135.4 282.225	CHICAGO APP CON 119.0 292.125	O'HARE TOWER 126.9 348.0	GND CON (TWR NORTH) 124.125 (TWR SOUTH) 118.05 (ALL TWRs) 226.675	(TWR CENTER) 121.75 (OBND) 121.9 (IBND)	CLNC DEL 121.6	CPDLC
--	---	------------------------------------	---	---	--------------------------	-------



ELEV 680	D	TDZE 654
-----------------	----------	-----------------



1200	4000	CGT R-307	WASCO CGT 45.8 RADAR	VGSIs and ILS glidepath not coincident.			
hdg 265°				BASHH I-IAC 13.6 RADAR	GRABL I-IAC 19.9 RADAR	NRMAH I-IAC 26.2 RADAR	
		TAFS INT I-IAC 4.6 RADAR	EBENS I-IAC 10.5 RADAR	RIPPR I-IAC 16.7 RADAR	JOEBO I-IAC 23 RADAR		
		IM 750	2200	4000	5000	6000	7000
		1040'	4.7 NM	5.9 NM	3.1 NM	3.1 NM	3.1 NM
CATEGORY	A	B	C	D			
S-ILS 27L	CAT II RA 110/12			100 DA 754			
S-ILS 27L	CAT III RVR 06						

CATEGORY II & III ILS - SPECIAL AIRCREW & AIRCRAFT CERTIFICATION REQUIRED

EC-3, 16 JUN 2022 to 14 JUL 2022

EC-3, 16 JUN 2022 to 14 JUL 2022