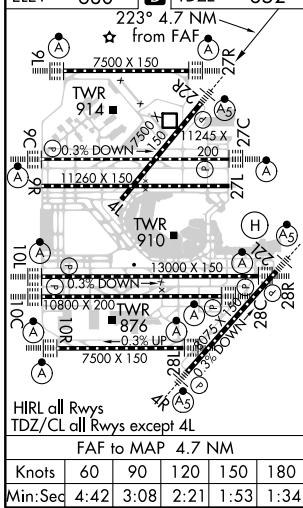
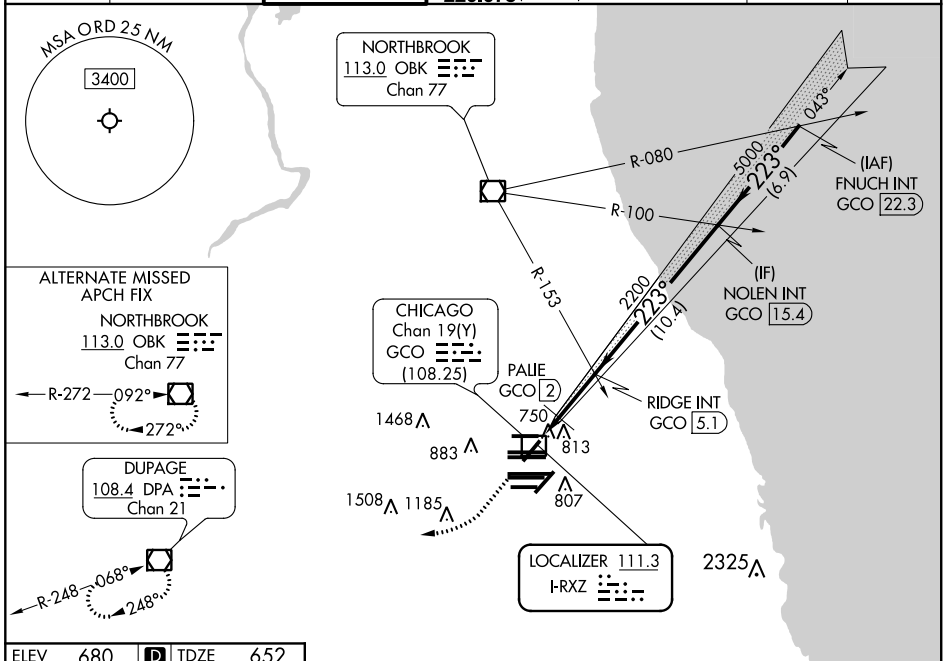


LOC I-RXZ 111.3	APP CRS 223°	Rwy ldg TDZE 7300 652 Apt Elev 680
---------------------------	------------------------	---

ILS or LOC RWY 22R

CHICAGO O'HARE INTL (ORD)

RADAR required for procedure entry.		MALSR	MISSED APPROACH: Climb to 1300 then climbing right turn to 4000 direct DPA VOR/DME and hold.			
Simultaneous approach authorized. DME from GCO DME.			GND CON (TWR NORTH) 124.125 118.05 226.675 (ALL TWRs)	(TWR CENTER) (OBND) 121.75 (IBND) 121.9	CLNC DEL 121.6	CPDLC
D-ATIS 135.4 282.225	CHICAGO APP CON 119.0 292.125	O'HARE TOWER 126.9 348.0				



1300	4000	DPA	VGSI and ILS glidepath not coincident (VGSI Angle 3.00/TCH 69).	
			FNUCH INT GCO 22.3 RIDGE INT GCO 5.1 NOLEN INT GCO 15.4 7000 GS 3.00° TCH 49 0.8 NM, 0.8 NM, 3.1 NM, 10.4 NM, 6.9 NM	
CATEGORY	A	B	C	D
S-ILS 22R	852/18 200 (200-½)			
S-LOC 22R	1220/24 568 (600-½)	1220-1¼ 568 (600-1¼)		
C CIRCLING	1220-1 540 (600-1)	1220-1½ 540 (600-1½)		1460-2½ 780 (800-2½)
PALIE FIX MINIMUMS				
S-LOC 22R	980/24 328 (300-½)	980/26 328 (300-½)		
C CIRCLING	1220-1 540 (600-1)	1220-1½ 540 (600-1½)		1460-2½ 780 (800-2½)

EC-3, 16 JUN 2022 to 14 JUL 2022

EC-3, 16 JUN 2022 to 14 JUL 2022