

LOC/DME I-IAC 110.5 Chan 42	APP CRS 273°	Rwy Idg 10260 TDZE 654 Apt Elev 680
---	------------------------	--

ILS or LOC RWY 27L

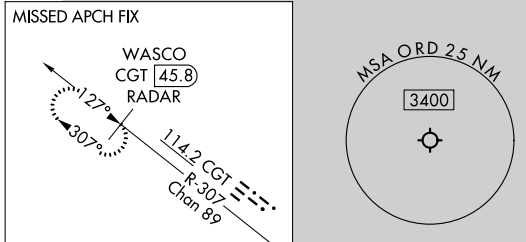
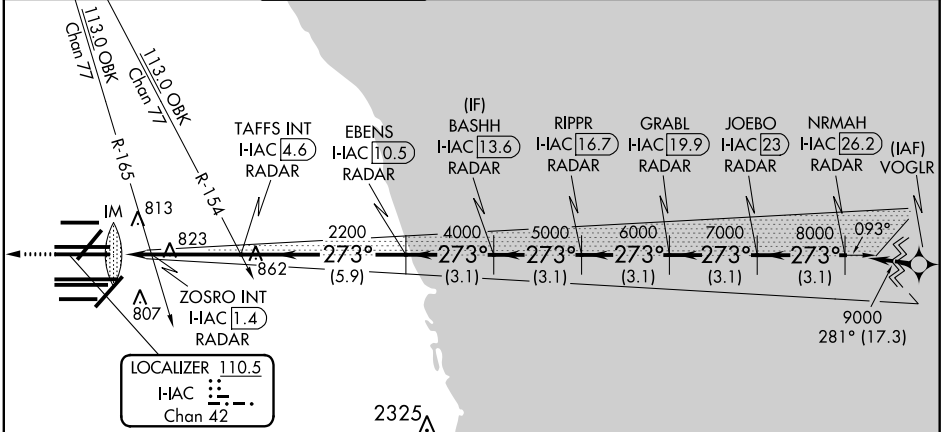
CHICAGO O'HARE INTL (ORD)

From VOR: RNAV 1-GPS required. Aircraft not GPS equipped - RADAR required for procedure entry. DME or RADAR required.

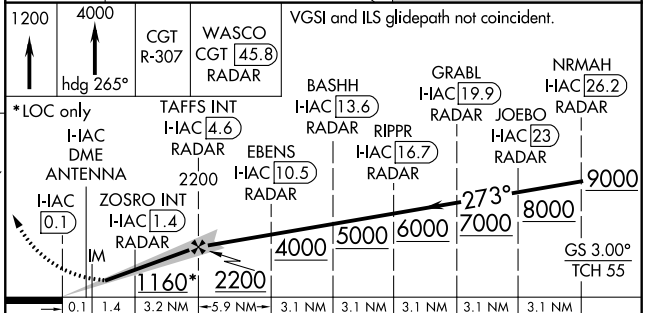
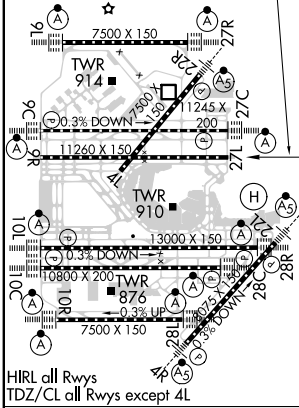
MISSED APPROACH: Climb to 1200 then climb to 4000 on heading 265° and on CGT VORTAC R-307 to WASCO/CGT 45.8 DME/RADAR and hold.

Simultaneous approach authorized.

D-ATIS 135.4 282.225	CHICAGO APP CON 119.0 292.125	O'HARE TOWER 126.9 348.0	GND CON (TWR NORTH) 124.125 (TWR SOUTH) 118.05 (ALL TWRS) 226.675	(TWR CENTER) 121.75 (OBND) 121.9 (IBND)	CLNC DEL 121.6	CPDLC
--	---	------------------------------------	---	---	--------------------------	-------



ELEV 680	D	TDZE 654
----------	----------	----------



CATEGORY	A	B	C	D
S-ILS 27L	854/18 200 (200-½)			
S-LOC 27L	1160/24	506 (500-½)	1160/55	506 (500-1)
ZOSRO FIX MINIMUMS (DUAL VOR RECEIVERS OR DME REQUIRED)				
S-LOC 27L	1080/24	426 (400-½)	1080/40	426 (400-¾)

EC-3, 16 JUN 2022 to 14 JUL 2022

EC-3, 16 JUN 2022 to 14 JUL 2022