

LOC/DME I-JAV 110.5 Chan 42	APP CRS 093°	Rwy Idg 11260 TDZE 660 Apt Elev 680
--	------------------------	--

ILS or LOC RWY 9R

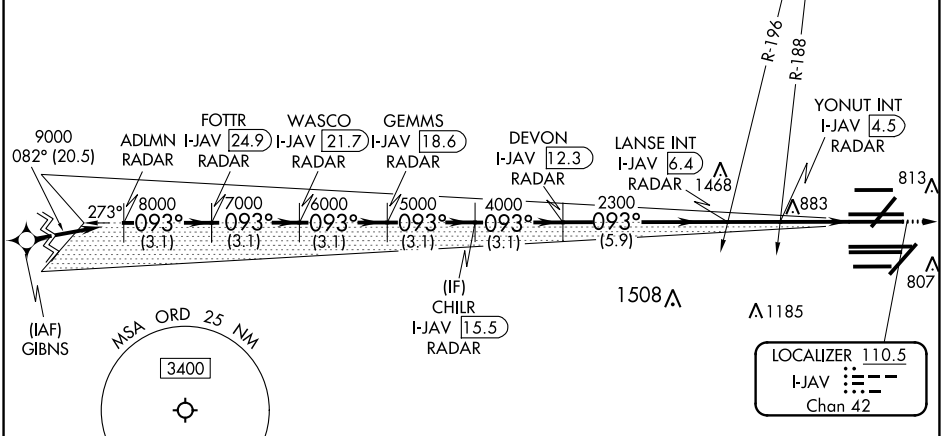
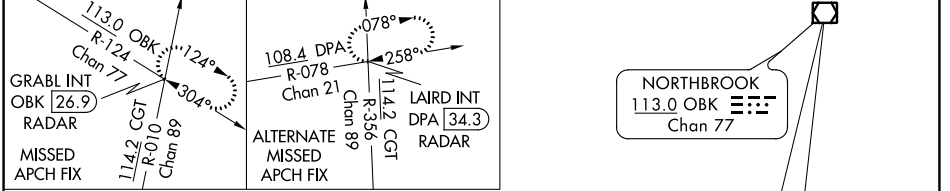
CHICAGO O'HARE INTL (ORD)

From GIBNS: RNAV 1-GPS required. RADAR or DME required.
Aircraft not GPS equipped: RADAR required for procedure entry.

Simultaneous approach authorized.
For inop ALS, increase S-LOC 9R Cat C/D visibility to 1 1/2 SM.

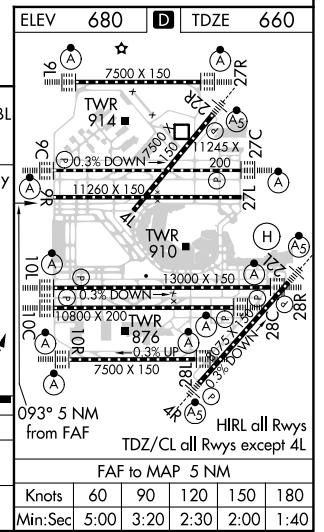
MISSED APPROACH: Climb to 4000 on OBK VOR/DME R-124 to GRABL INT/OBK 26.9 DME/RADAR and hold.

D-ATIS 135.4 282.225	CHICAGO APP CON 119.0 292.125	O'HARE TOWER 126.9 348.0	GND CON (TWR NORTH) 124.125 (TWR SOUTH) 118.05 226.675 (ALL TWRs)	(TWR CENTER) 121.75 (OBND) 121.9 (IBND)	CLNC DEL 121.6	CPDLC
--	--	---	--	---	--------------------------	-------



VGSI and ILS glidepath not coincident.

ADLMN RADAR	FOTTR I-JAV 24.9 RADAR	WASCO I-JAV 21.7 RADAR	CHILR I-JAV 15.5 RADAR	LANSE INT I-JAV 6.4 RADAR	DEVON I-JAV 12.3 RADAR	YONUT INT I-JAV 4.5 RADAR	GRABL INT
9000	8000	7000	6000	5000	4000	2300	1700
3.1 NM	3.1 NM	3.1 NM	3.1 NM	3.1 NM	5.9 NM	1.9 NM	1.8 1.3
CATEGORY	A		B		C		D
S-ILS 9R	860/18		200 (200-1/2)				
S-LOC 9R	1160/24		500 (500-1/2)		1160/50 500 (500-1)		



EC-3, 16 JUN 2022 to 14 JUL 2022

EC-3, 16 JUN 2022 to 14 JUL 2022