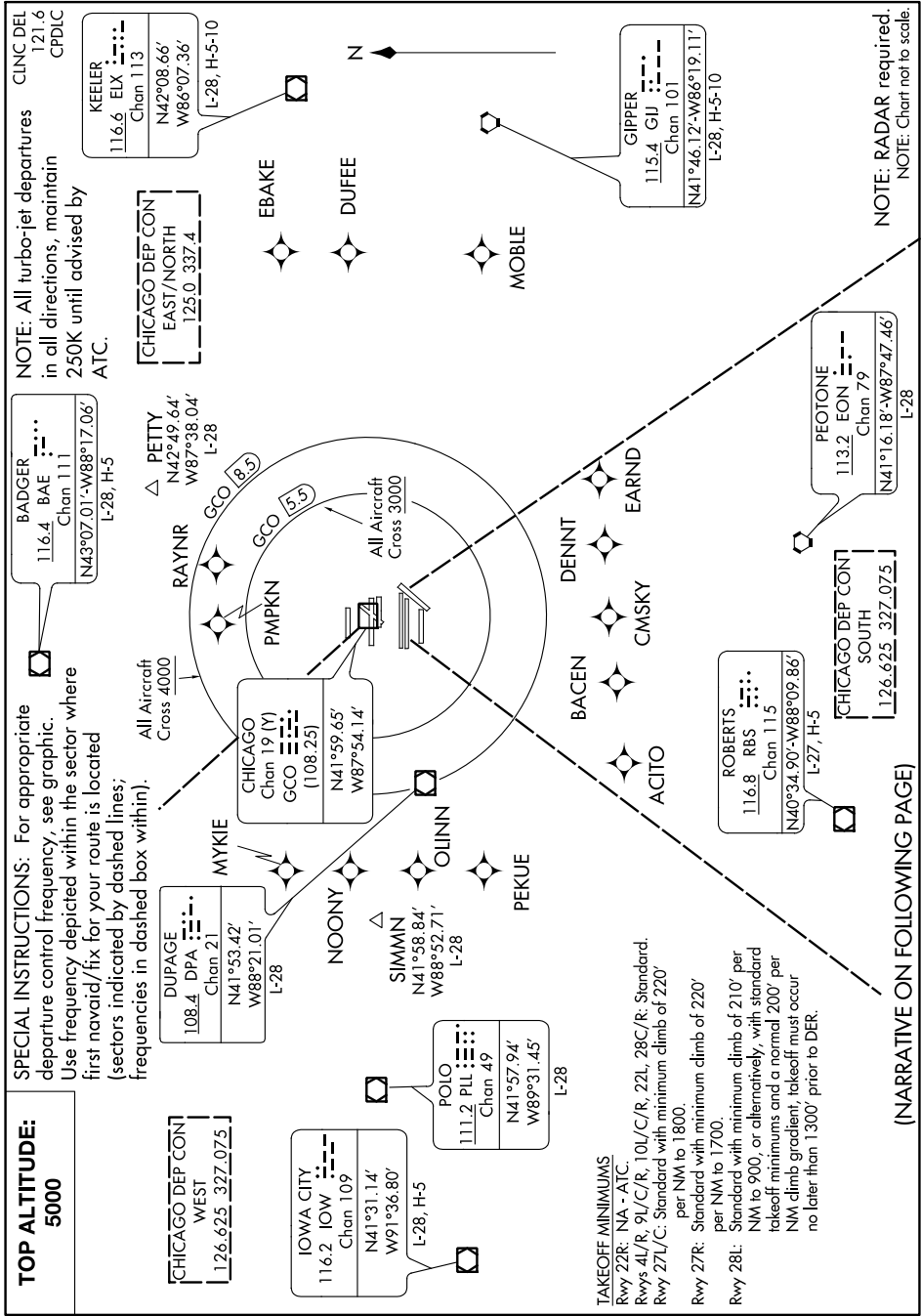


O'HARE SEVEN DEPARTURE

EC-3, 16 JUN 2022 to 14 JUL 2022



TOP ALTITUDE:
5000

SPECIAL INSTRUCTIONS: For appropriate departure control frequency, see graphic. Use frequency depicted within the sector where first navaid/fix for your route is located (sectors indicated by dashed lines; frequencies indicated in dashed box outlines).

NOTE: All turbo-jet departures in all directions, maintain 250K until advised by ATC.

CHICAGO DEP CON
WEST
126.625 327.075

DUPAGE
108.4 DPA
Chan 21
N41°53.42'
W88°21.01'
L-28

CHICAGO
Chan 19 (Y)
GCO
(108.25)
N41°59.65'
W87°54.14'

CHICAGO DEP CON
EAST/NORTH
125.0 337.4

KEELER
116.6 ELX
Chan 113
N42°08.66'
W86°07.36'
L-28, H-5-10

IOWA CITY
116.2 IOW
Chan 109
N41°31.14'
W91°36.80'
L-28, H-5

POLO
111.2 PLL
Chan 49
N41°57.94'
W89°31.45'
L-28

NOONY
SIMMIN
N41°38.84'
W88°52.71'
L-28

CHICAGO DEP CON
SOUTH
126.625 327.075

RAYNR
PETTY
N42°49.64'
W87°38.04'
L-28

EBAKE
DUFFE
MOBILE

TAKEOFF MINIMUMS
Rwy 22R: NA - ATC.
Rwys 4L/R, 9L/C/R, 10L/C/R, 28C/R: Standard.
Rwy 27L/C: Standard with minimum climb of 220' per NM to 1800.
Rwy 27R: Standard with minimum climb of 220' per NM to 1700.
Rwy 28L: Standard with minimum climb of 210' per NM to 900, or alternatively, with standard takeoff minimums and a normal 200' per NM climb gradient, takeoff must occur no later than 1300' prior to DER.

ROBERTS
116.8 RBS
Chan 115
N40°34.90'-W88°09.86'
L-27, H-5

PEATONE
113.2 EON
Chan 79
N41°16.18'-W87°47.46'
L-28

GIPPER
115.4 GIJ
Chan 101
N41°46.12'-W86°19.11'
L-28, H-5-10

NOTE: RADAR required.
NOTE: Chart not to scale.

(NARRATIVE ON FOLLOWING PAGE)

O'HARE SEVEN DEPARTURE

EC-3, 16 JUN 2022 to 14 JUL 2022