

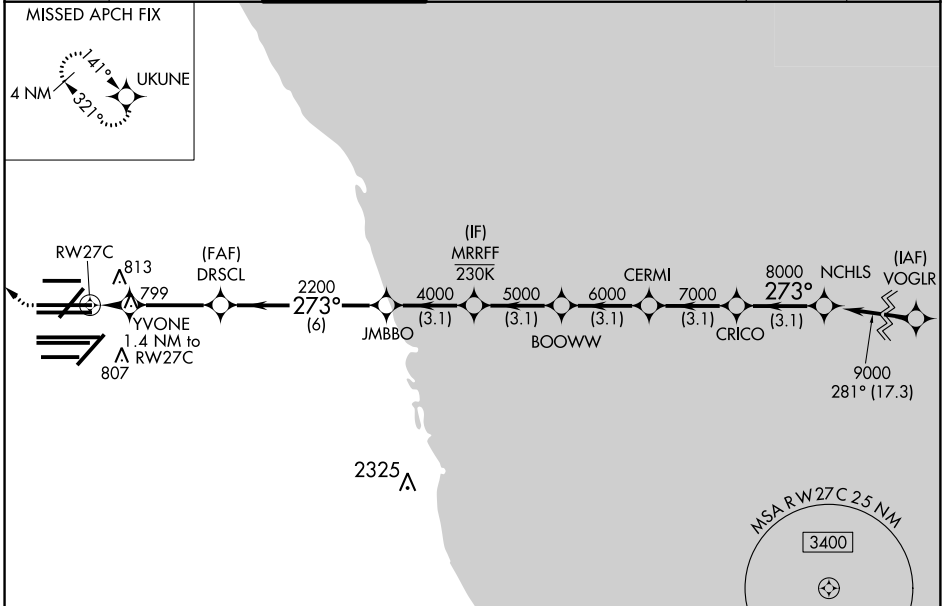
WAAS CH <b>70643</b> <b>W27D</b>	APP CRS <b>273°</b>	Rwy Idg <b>11245</b> TDZE <b>653</b> Apt Elev <b>680</b>
--	------------------------	--

# RNAV (GPS) RWY 27C

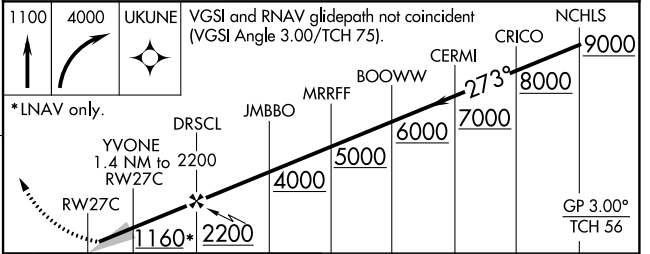
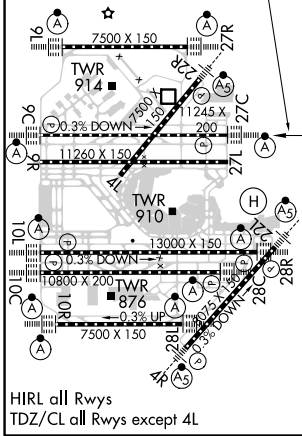
CHICAGO O'HARE INTL (ORD)

RNP APCH. ▼ Simultaneous approach authorized. LNAV procedure NA during simultaneous operations. Use of FD or AP required during simultaneous operations. For uncompensated Baro-VNAV systems, LNAV/VNAV NA below -19°C or above 54°C. For inop ALS, increase LNAV Cat C/D visibility to RVR 6000.	ALSF-2 	MISSED APPROACH: Climb to 1100 then climbing right turn to 4000 direct UKUNE and hold.
--	------------	---

D-ATIS <b>135.4</b> <b>282.225</b>	CHICAGO APP CON <b>119.0 292.125</b>	O'HARE TOWER <b>121.15 348.0</b>	GND CON <b>124.125</b> (TWR NORTH) <b>118.05</b> (TWR SOUTH) <b>226.675</b> (ALL TWRs)	(TWR CENTER) <b>121.75</b> (OBND) <b>121.9</b> (IBND)	CLNC DEL <b>121.6</b>	CPDLC
--	---	-------------------------------------	---	---	--------------------------	-------



ELEV 680	<b>D</b>	TDZE 653
----------	----------	----------



CATEGORY	A	B	C	D
LPV DA	853/18	200 (200-1/2)		
LNAV/VNAV DA	1086/40	433 (500-3/4)		
LNAV MDA	1060/24	407 (400-1/2)	1060/40	407 (400-3/4)

EC-3, 16 JUN 2022 to 14 JUL 2022

EC-3, 16 JUN 2022 to 14 JUL 2022