

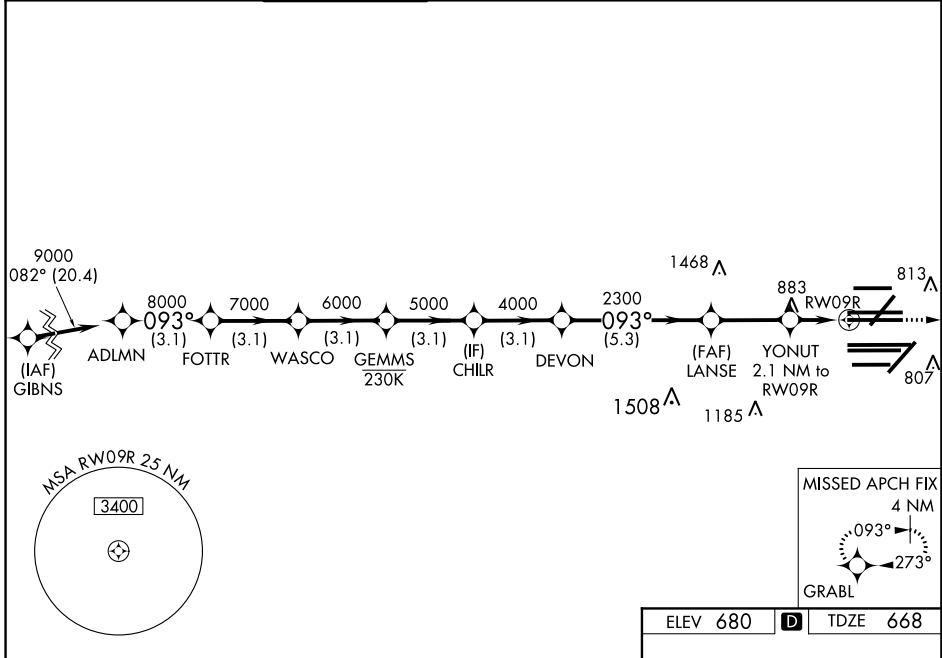
WAAS CH 78204 W09A	APP CRS 093°	Rwy ldg 11260 TDZE 668 Apt Elev 680
--	------------------------	--

RNAV (GPS) RWY 9R

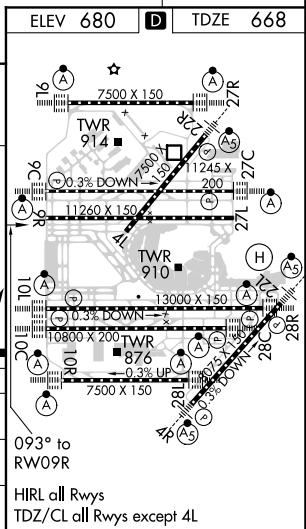
CHICAGO O'HARE INTL (ORD)

RNP APCH - GPS. RADAR required.		MALSR 	MISSED APPROACH: Climb to 4000 direct GRABL and hold.
Simultaneous approach authorized. Use of FD or AP required during simultaneous operations. LNAV procedure NA during simultaneous operations. For uncompensated Baro-VNAV systems, LNAV/VNAV NA below -18°C or above 54°C.			

D-ATIS 135.4 282.225	CHICAGO APP CON 119.0 292.125	O'HARE TOWER 126.9 348.0	GND CON 124.125 (TWR NORTH) 118.05 (TWR SOUTH) 226.675 (ALL TWRs)	(TWR CENTER) 121.75 (OBND) 121.9 (IBND)	CLNC DEL 121.6	CPDLC
--	---	------------------------------------	---	---	--------------------------	-------



	ADLMN	FOTTR	WASCO	GEMMS	CHILR	DEVON	LANSE	YONUT	RW09R
	9000	8000	7000	6000	5000	4000	2300	1400	680
	3.1 NM	3.1 NM	3.1 NM	3.1 NM	3.1 NM	5.3 NM	2.8 NM	0.8	1.3
CATEGORY	A		B		C		D		
LPV DA	868- ³ / ₄		200 (200- ³ / ₄)						
LNAV/VNAV DA	976- ⁷ / ₈		308 (300- ⁷ / ₈)						
LNAV MDA	1140-1		472 (500-1)		1140-1 ³ / ₈		472 (500-1 ³ / ₈)		



EC-3, 16 JUN 2022 to 14 JUL 2022

EC-3, 16 JUN 2022 to 14 JUL 2022