

RNAV (RNP) Y RWY 27L

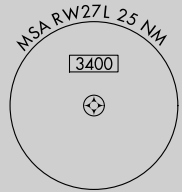
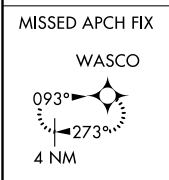
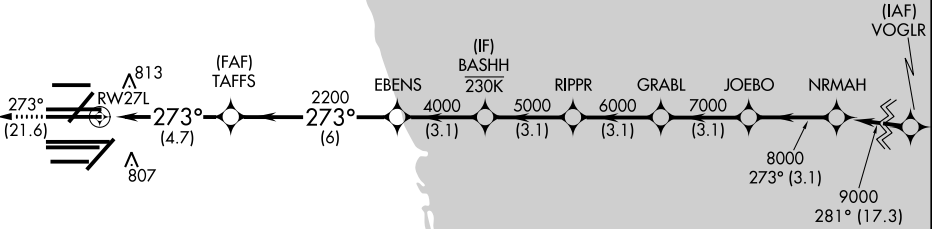
CHICAGO O'HARE INTL (ORD)

APP CRS	Rwy Idg	10260
273°	TDZE	654
	Apt Elev	680

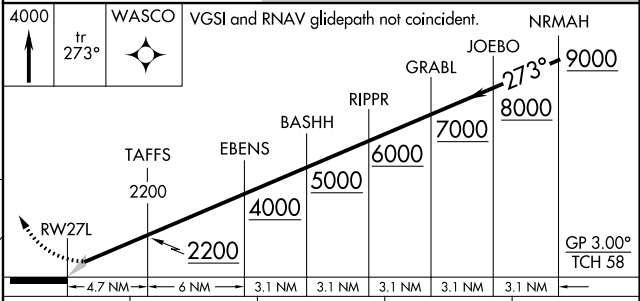
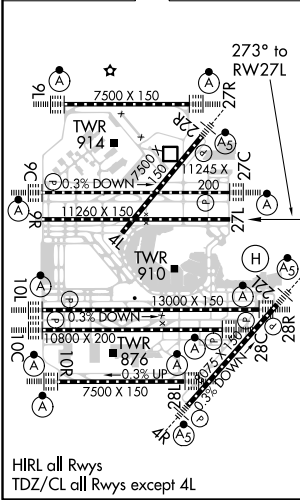
RNP AR APCH - GPS.		ALSF-2 	MISSED APPROACH: Climb to 4000 on track 273° to WASCO and hold.
Simultaneous approach authorized. Simultaneous operations require use of vertical guidance; maintain last assigned altitude until established on glidepath. For uncompensated Baro-VNAV systems, procedure NA below -19°C or above 54°C.			

D-ATIS 135.4 282.225	CHICAGO APP CON 119.0 292.125	O'HARE TOWER 126.9 348.0	GND CON 124.125 (TWR NORTH) 118.05 (TWR SOUTH) 226.675 (ALL TWRS)	(TWR CENTER) 121.75 (OBND) 121.9 (IBND)	CLNC DEL 121.6	CPDLC
------------------------------------------	-----------------------------------------	------------------------------------	-------------------------------------------------------------------------------------------------	-------------------------------------------------------------	--------------------------	-------

RADAR REQUIRED



ELEV	680	D	TDZE	654
------	------------	----------	------	------------



CATEGORY	A	B	C	D
RNP 0.15 DA		989/26	335 (400-½)	
RNP 0.30 DA		1133/50	479 (500-1)	

AUTHORIZATION REQUIRED

EC-3, 16 JUN 2022 to 14 JUL 2022

EC-3, 16 JUN 2022 to 14 JUL 2022