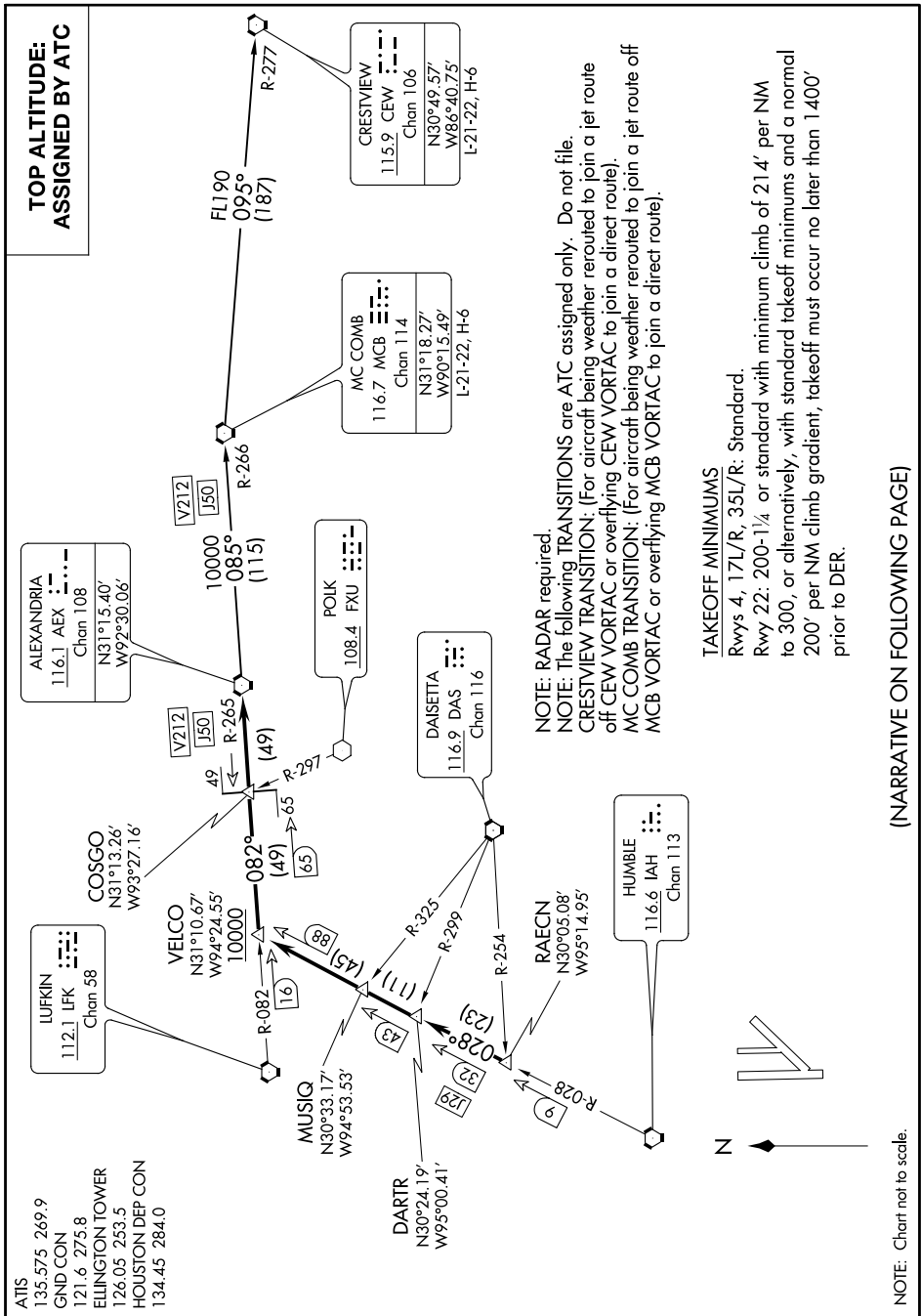


# ALEXANDRIA THREE DEPARTURE

SC-5, 16 JUN 2022 to 14 JUL 2022



**TOP ALTITUDE:  
ASSIGNED BY ATC**

NOTE: RADAR required.  
 NOTE: The following TRANSITIONS are ATC assigned only. Do not file.  
 CRESTVIEW TRANSITION: (For aircraft being weather rerouted to join a jet route off CEW VORTAC or overflying CEW VORTAC to join a direct route).  
 MC COMB TRANSITION: (For aircraft being weather rerouted to join a jet route off MCB VORTAC or overflying MCB VORTAC to join a direct route).

### TAKEOFF MINIMUMS

Rwys 4, 17L/R, 35L/R: Standard.  
 Rwy 22: 200-1¼ or standard with minimum climb of 214' per NM to 300, or alternatively, with standard takeoff minimums and a normal 200' per NM climb gradient, takeoff must occur no later than 1400' prior to DER.

(NARRATIVE ON FOLLOWING PAGE)

SC-5, 16 JUN 2022 to 14 JUL 2022

# ALEXANDRIA THREE DEPARTURE