

(BLTWY7.BLTWY) 21280

AL-197 (FAA)

ELLINGTON (EFD)

HOUSTON, TEXAS

# BLTWY SEVEN DEPARTURE (RNAV)

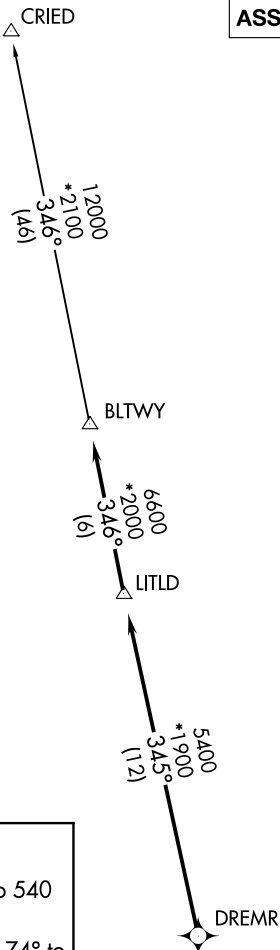
ATIS  
 135.575 269.9  
 GND CON  
 121.6 275.8  
 ELLINGTON TOWER  
 126.05 253.5  
 HOUSTON DEP CON  
 134.45 284.0

**TOP ALTITUDE:  
ASSIGNED BY ATC**

NOTE: RADAR required.  
 NOTE: DME/DME/IRU or GPS required.  
 NOTE: RNAV 1.

### TAKEOFF MINIMUMS

Rwy 4, 17L/R, 22, 35L/R:  
 Standard with minimum climb of 500' per NM to 540.



### DEPARTURE ROUTE DESCRIPTION

**TAKEOFF RUNWAY 4:** Climb on heading 039° to 540 for RADAR vectors to DREMR, thence . . . .

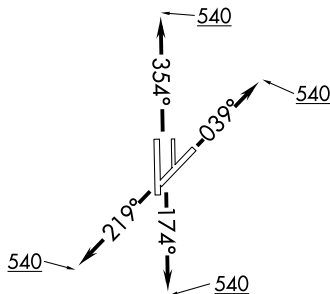
**TAKEOFF RUNWAYS 17L/R:** Climb on heading 174° to 540 for RADAR vectors to DREMR, thence . . . .

**TAKEOFF RUNWAY 22:** Climb on heading 219° to 540 for RADAR vectors to DREMR, thence . . . .

**TAKEOFF RUNWAYS 35L/R:** Climb on heading 354° to 540 for RADAR vectors to DREMR, thence . . . .

...on track 345° to LITLD, then on track 346° to BLTWY, then on (transition). Maintain ATC assigned altitude. Expect filed altitude 10 minutes after departure.

CRIED TRANSITION (BLTWY7.CRIED)



NOTE: Chart not to scale.

# BLTWY SEVEN DEPARTURE (RNAV)

(BLTWY7.BLTWY) 07OCT21

HOUSTON, TEXAS  
ELLINGTON (EFD)

SC-5, 16 JUN 2022 to 14 JUL 2022

SC-5, 16 JUN 2022 to 14 JUL 2022