

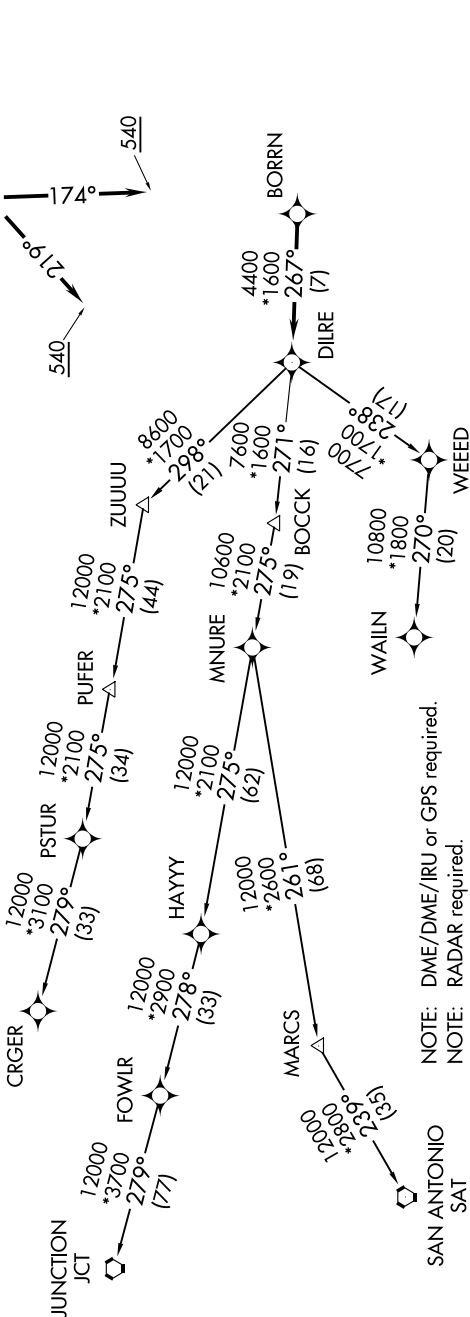
BORRN FOUR DEPARTURE (RNAV)

SC-5, 16 JUN 2022 to 14 JUL 2022

ATIS
135.575 269.9
GND CON
121.6 275.8
ELLINGTON TOWER
126.05 253.5
HOUSTON DEP CON
134.45 284.0

TAKEOFF MINIMUMS:
Rwy 4, 17L/R, 22, 35L/R:
Standard with minimum
climb of 500' per NM to 540.

**TOP ALTITUDE:
ASSIGNED BY ATC**



NOTE: DME/DME/IRU or GPS required.
NOTE: RADAR required.
NOTE: RNAV 1.
NOTE: CRGR TRANSITION ATC assigned only
for aircraft departing 54T, AXH, EFD, GLS,
HPY, IWS, LBX, LVJ, SGR, TME, T00, T41.

(NARRATIVE ON FOLLOWING PAGE)

NOTE: Chart not to scale.

SC-5, 16 JUN 2022 to 14 JUL 2022

BORRN FOUR DEPARTURE (RNAV)