

EL DORADO ONE DEPARTURE

ATIS
135.575 269.9
GND CON
121.6 275.8
ELLINGTON TOWER
126.05 253.5
HOUSTON DEP CON
134.45 284.0

**TOP ALTITUDE:
ASSIGNED BY ATC**

EL DORADO
115.5 ELD
Chan 102
N33°15.37'-W92°44.64'
L-17, H-6

NOTE: RADAR required.
NOTE: For aircraft destined KMEM
or filed via Q32 or J42.

LUFKIN
112.1 LFK
Chan 58

ENJOY
N31°16.73'
W94°19.82'

MUSIQ
N30°33.17'
W94°53.53'

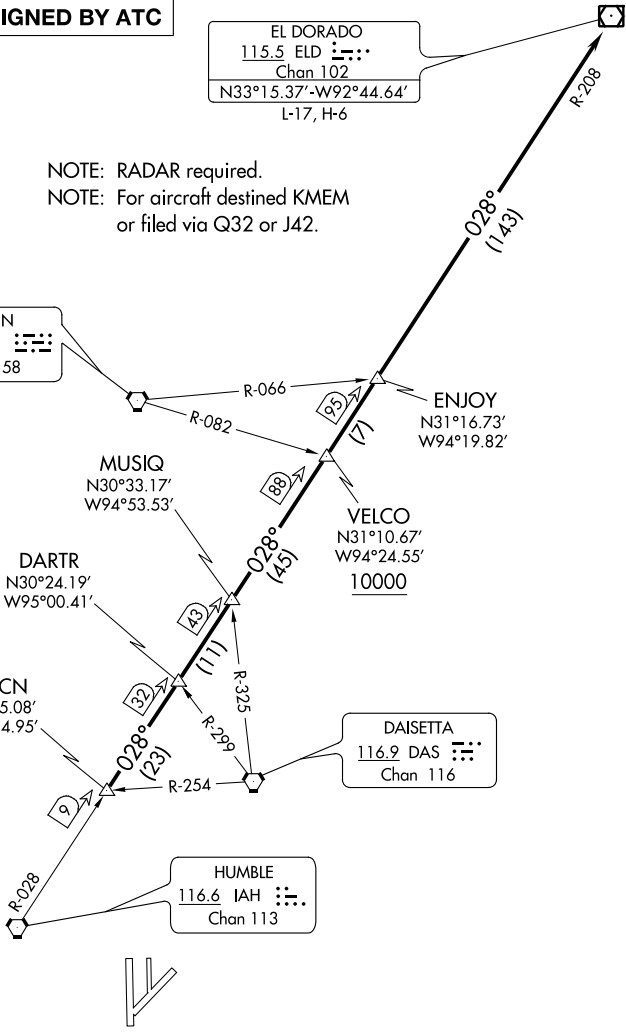
VELCO
N31°10.67'
W94°24.55'
10000

DARTR
N30°24.19'
W95°00.41'

RAECN
N30°05.08'
W95°14.95'

DAISETTA
116.9 DAS
Chan 116

HUMBLE
116.6 IAH
Chan 113



TAKEOFF MINIMUMS

Rwys 4, 17L/R, 35L/R: Standard.

Rwy 22: 200-1¼ or standard with minimum climb of 214' per NM to 300 or alternatively with standard takeoff minimums and a normal 200' per NM climb gradient, takeoff must occur no later than 1400' prior to DER.

NOTE: Chart not to scale.

(NARRATIVE ON FOLLOWING PAGE)

SC-5, 16 JUN 2022 to 14 JUL 2022

SC-5, 16 JUN 2022 to 14 JUL 2022

EL DORADO ONE DEPARTURE

(ELD1.ELD) 07OCT21