

LOC I-LPV <b>110.3</b>	APP CRS <b>174°</b>	Rwy Idg TDZE Apt Elev	<b>9001</b> <b>32</b> <b>33</b>
---------------------------	------------------------	-----------------------------	---------------------------------------

# ILS Z or LOC Z Rwy 17R

ELLINGTON (EFD)

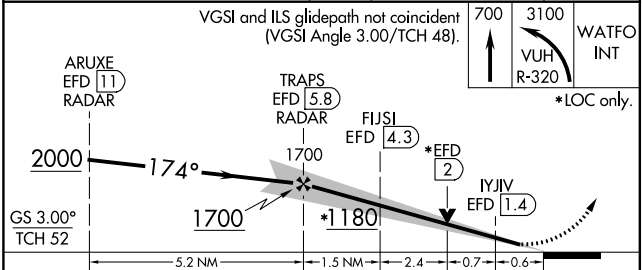
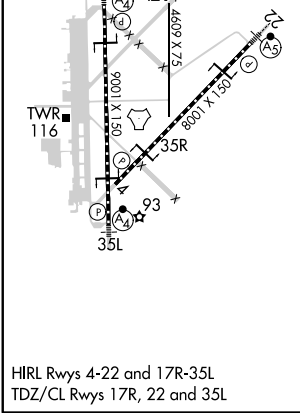
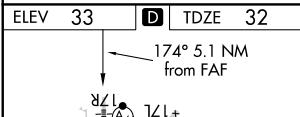
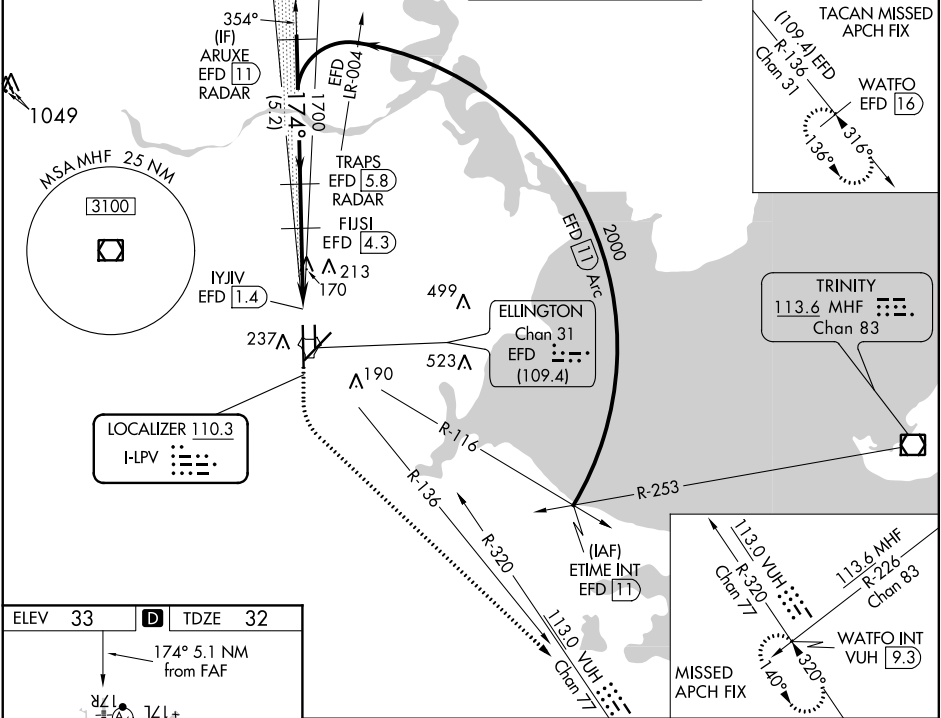
DME required. RADAR required for procedure entry.

**⚠** Circling NA west of Rwy 17R-35L. DME from EFD TACAN. Simultaneous reception of I-LPV and EFD DME required. Inop table does not apply to S-ILS 17R. For inop ALS, increase S-LOC 17R Cats C/D/E visibility to 1 1/8 SM.

**MALSF**

**MISSED APPROACH:** Climb to 700 then climbing left turn to 3100 on VUH VOR/DME R-320 to WATFO INT/VUH 9.3 DME and hold (TACAN aircraft climb to 700 then climbing left turn to 3100 on EFD TACAN R-136 to WATFO INT/EFD 16 DME and hold southeast, left turn, 316° inbound).

ATIS <b>135.575 269.9</b>	HOUSTON APP CON <b>134.45 284.0</b>	ELLINGTON TOWER <b>126.05 253.5</b>	GND CON <b>121.6 275.8</b>
------------------------------	--	--	-------------------------------



CATEGORY	A	B	C	D	E
S-ILS 17R	232/40		200 (200-3/4)		
S-LOC 17R	480/40	448 (500-3/4)	480/55	448 (500-1)	
<b>C</b> CIRCLING	500-1	467 (500-1)	580-1 1/2 547 (600-1 1/2)	640-2 607 (700-2)	700-2 1/4 667 (700-2 1/4)

SC-5, 16 JUN 2022 to 14 JUL 2022

SC-5, 16 JUN 2022 to 14 JUL 2022