

SC-5, 16 JUN 2022 to 14 JUL 2022

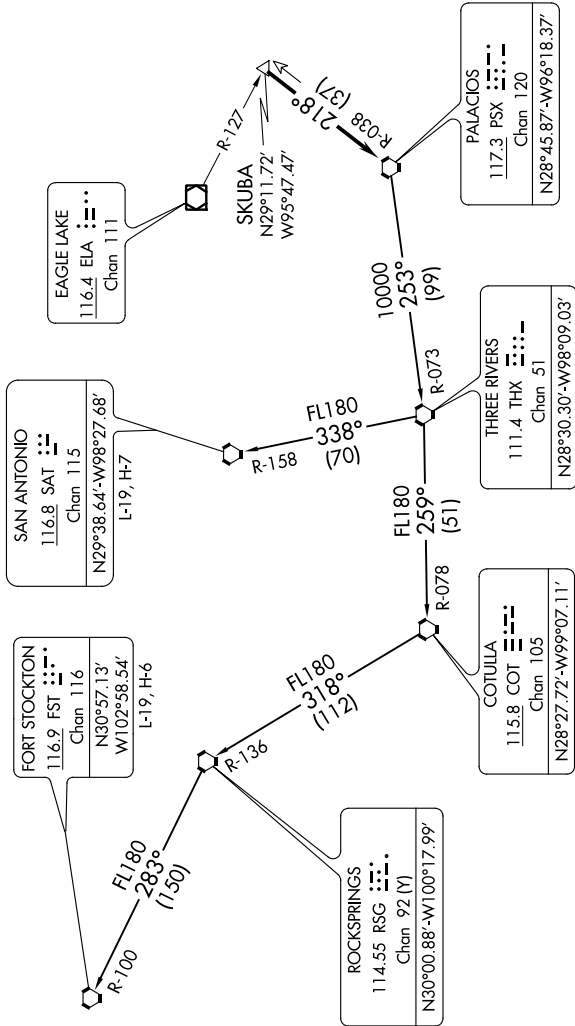
ATIS
135.575 269.9
GND CON
121.6 275.8
ELLINGTON TOWER
126.05 253.5
HOUSTON DEP CON
134.45 284.0

TAKEOFF MINIMUMS

Rwys 4, 17L/R, 35L/R: Standard.

Rwy 22: 200-1¼ or standard with minimum climb of 214' per NM to 300 or alternatively with standard takeoff minimums and a normal 200' per NM climb gradient; takeoff must occur no later than 1400' prior to DER.

**TOP ALTITUDE:
ASSIGNED BY ATC**



(NARRATIVE ON FOLLOWING PAGE)

NOTE: RADAR required.
NOTE: Chart not to scale.

SC-5, 16 JUN 2022 to 14 JUL 2022