

LOC I-JHF 111.7	APP CRS 159°	Rwy Idg 5387 TDZE 341 Apt Elev 341
---------------------------	------------------------	---

ILS or LOC RWY 16

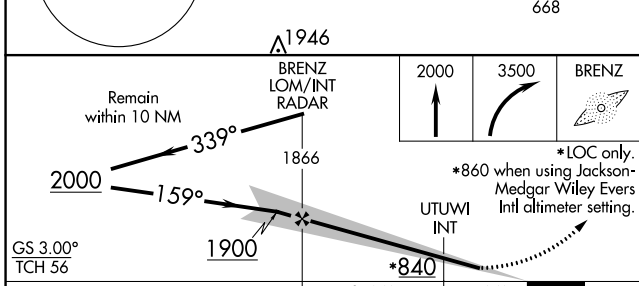
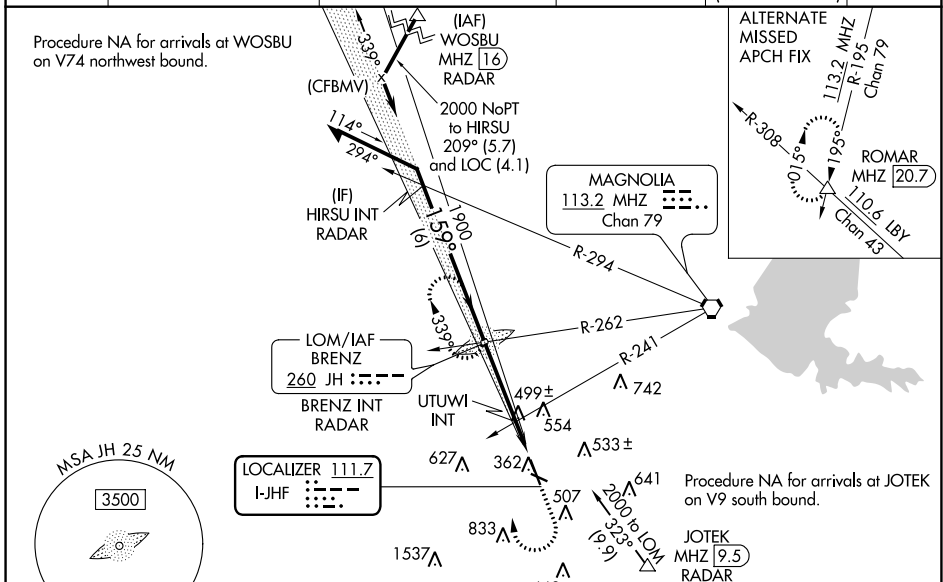
HAWKINS FLD (HKS)

▼ When local altimeter setting not received, use Jackson-Medgar Wiley Evers Intl altimeter setting, increase all DA 19 feet and all MDA 20 feet, increase Circling Cat C visibility ¼ mile and UTUWI fix Circling Cat C visibility ¼ mile. For inop MALS, increase S-LOC 16 Cats C/D visibility ¾, increase UTUWI fix S-LOC 16 Cats C/D visibility ¾. For inop MALS when using Jackson-Medgar Wiley Evers Intl altimeter setting increase S-LOC Cats C/D visibility ¾. Glideslope unusable when control tower closed, only localizer minimums authorized during this period. ADF required.

MALS

MISSED APPROACH:
Climb to 2000 then climbing right turn to 3500 direct BRENZ LOM and hold.

ASOS 120.625	JACKSON APP CON * 123.9 319.2	HAWKINS TOWER * 119.65 (CTAF) 257.8	GND CON 121.9 239.0	CLNC DEL 121.9 (When twr closed)	UNICOM 122.95
------------------------	---	---	-------------------------------	---	-------------------------



ELEV	341	TDZE	341
------	-----	------	-----

FAF to MAP	4.6 NM
Knots	60 90 120 150 180
Min:Sec	4:36 3:04 2:18 1:50 1:32

CATEGORY	A	B	C	D
S-ILS 16		541-½	200 (200-½)	
S-LOC 16	840-½	499 (500-½)	840-1	499 (500-1)
C CIRCLING	860-1 519 (600-1)	880-1 539 (600-1)	1140-2¼ 799 (800-2¼)	1320-3 979 (1000-3)
UTUWI FIX MINIMUMS (DUAL VOR RECEIVERS REQUIRED)				
S-LOC 16	760-½	419 (500-½)	760-¾	419 (500-¾)
C CIRCLING	860-1 519 (600-1)	880-1 539 (600-1)	1140-2¼ 799 (800-2¼)	1320-3 979 (1000-3)

SC-4, 16 JUN 2022 to 14 JUL 2022

SC-4, 16 JUN 2022 to 14 JUL 2022