

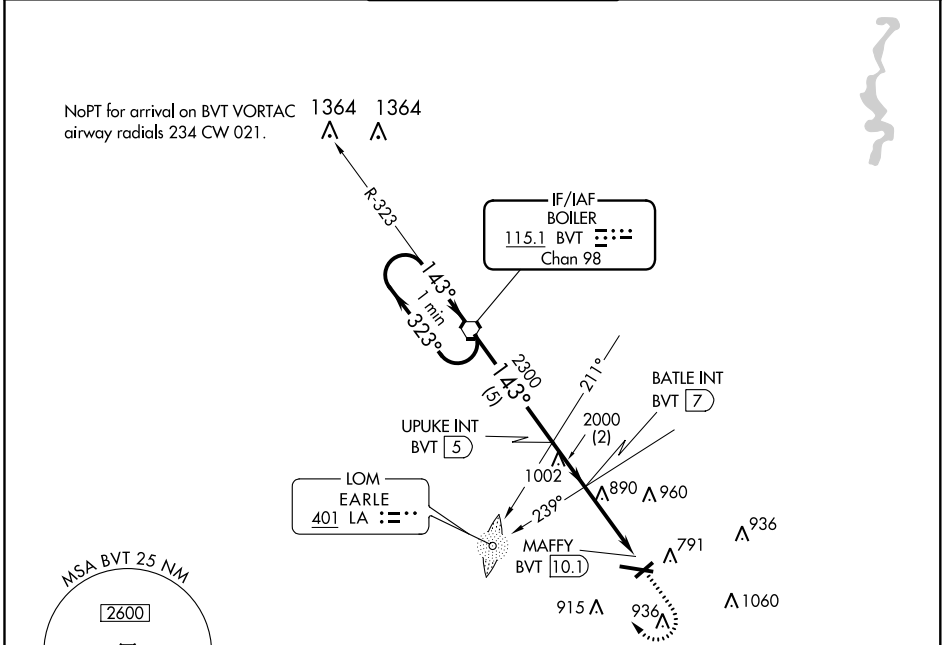
VORTAC BVT 115.1 Chan 98	APP CRS 143°	Rwy Idg TDZE Apt Elev	N/A N/A 606
----------------------------------------------	------------------------	-----------------------------	----------------------------------------

VOR-A
PURDUE UNIVERSITY (LAF)

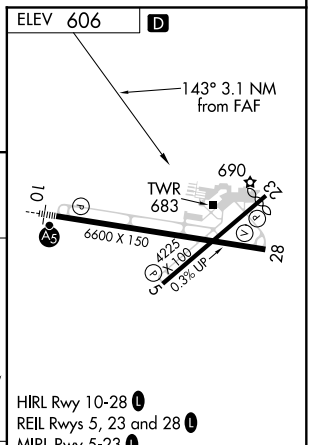
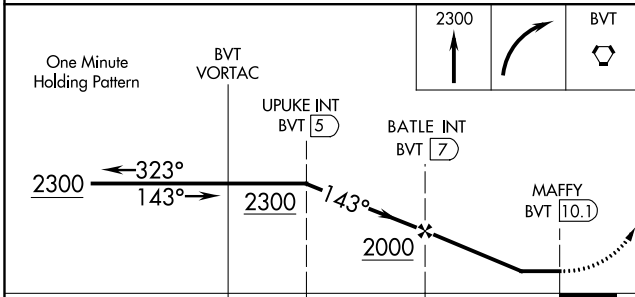
⚠ When local altimeter setting not received, use Vermilion Rgnl altimeter setting and increase all MDA 100 feet and Circling Cat C visibility ½ SM and Cat D visibility ¼ SM.

MISSED APPROACH: Climb to 2300 then right turn direct BVT VORTAC and hold.

ATIS 127.75	GRISSOM APP CON* 123.85 291.675	LAFAYETTE TOWER* 119.6 (CTAF) 343.625	GND CON 121.9 343.625	UNICOM 122.95
-----------------------	-------------------------------------------	-------------------------------------------------	---------------------------------	-------------------------



ADF or DME REQUIRED



CATEGORY	A	B	C	D	FAF to MAP 3.1 NM					
CIRCLING	1160-1	554 (600-1)	1320-2 714 (800-2)	1420-2¾ 814 (900-2¾)	Knots	60	90	120	150	180
					Min:Sec	3:06	2:04	1:33	1:14	1:02

EC-2, 16 JUN 2022 to 14 JUL 2022

EC-2, 16 JUN 2022 to 14 JUL 2022