

LAS VEGAS, NEVADA

HI-ILS or LOC Z RWY 21L

LOC I-DIQ 109.1	APCH CRS 209°	Rwy ldg TDZE Arpt Elev	21L 10,051 1865 1869	21R 10,120 1869
---------------------------	-------------------------	------------------------------	----------------------------------------------------	-------------------------------------

AL-227 (USAF)

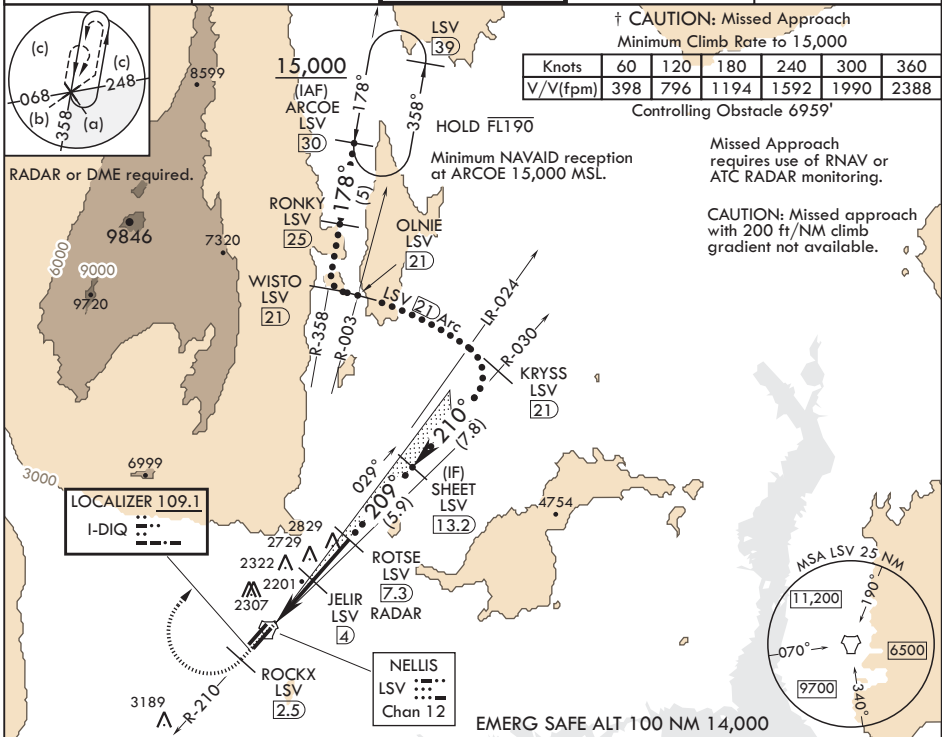
NELLIS AFB (KLSV)

† * When ALS inop, increase RVR to 40, vis to 3/4 mile.
 ** When ALS inop, increase vis to 1 3/4 miles.
 *** Circling not authorized E of Rwy 3R-21L.



† MISSED APPROACH: Climb to 15,000, intercept LSV TACAN R-210 to 2.5 DME (ROCKX), then climbing right turn heading 028° to join LSV R-358 to ARCOE and hold, continue climb in hold to 15,000. Missed approach not for civil use.

ATIS 270.1	APP CON 124.95 273.55	TOWER 132.55 327.0	GND CON 121.8 275.8	CLNC DEL 120.9 289.4
----------------------	---------------------------------	------------------------------	-------------------------------	--------------------------------



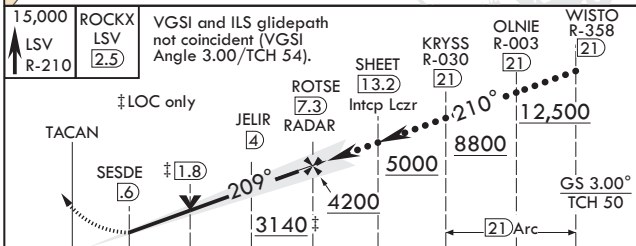
† CAUTION: Missed Approach
Minimum Climb Rate to 15,000

Knots	60	120	180	240	300	360
V/V(ftpm)	398	796	1194	1592	1990	2388

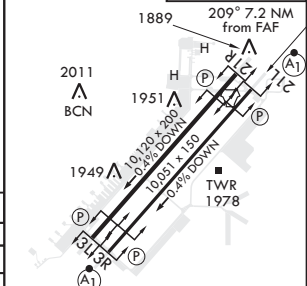
Controlling Obstacle 6959'

Missed Approach requires use of RNAV or ATC RADAR monitoring.

CAUTION: Missed approach with 200 ft/NM climb gradient not available.



ELEV 1869	TDZE 21L 1865	TDZE 21R 1869
-----------	---------------	---------------



CATEGORY	C	D	E
S-ILS 21L*	2065/24	200	(200-1/2)
S-LOC 21L**	2460-1 1/4	595	(600-1 1/4)
SIDESTEP 21R	2500-1 1/4	631	(700-1 1/4)
CIRCLING***	2620-2 1/4 751 (800-2 1/4)	2840-3 971 (1000-3)	3040-3 1171 (1200-3)

HIRL all Rwys

FAF to MAP 6.7 NM					
Knots	120	140	160	180	200
Min:Sec	3:21	2:52	2:31	2:14	2:01

LAS VEGAS, NEVADA
Amdt 9 22APR21

36°14'N - 115°02'W

NELLIS AFB (KLSV)

HI-ILS or LOC Z RWY 21L

SW-4, 16 JUN 2022 to 14 JUL 2022

SW-4, 16 JUN 2022 to 14 JUL 2022