

# HI-TACAN Z RWY 21L

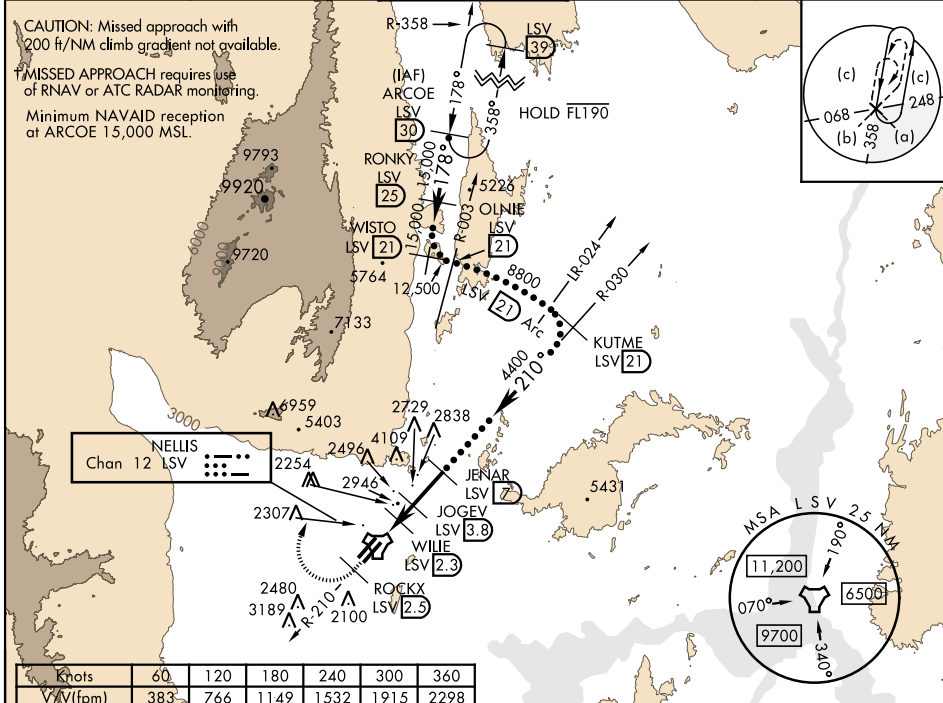
TACAN LSV Chan 12	APCH CRS 210°	Rwy ldg 21L 10,051 TDZE 1865 Arprt Elev 1869	Rwy ldg 21R 10,120 TDZE 1869	AL-227 [USAF]	NELLIS AFB (KLSV)
----------------------	------------------	--	---------------------------------	---------------	-------------------

▼\* When ALS inop, increase CAT CDE vis to 1 3/4 miles.  
 \*\* Circling not authorized E of Rwy 3R-21L.

ALSF-1

† MISSED APPROACH: Climb to 15,000, intercept LSV TACAN R-210 to 2.5 DME (ROCKX), then climbing right turn heading 028° to join LSV R-358 to ARCOE and hold. Missed approach not for civil use.

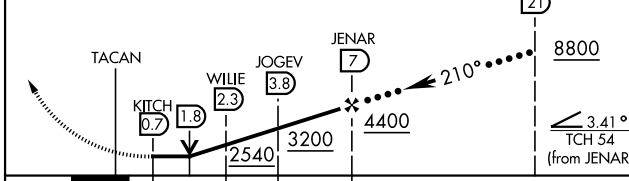
ATIS 270.1	NELLIS APP CON 124.95 273.55	NELLIS TOWER 132.55 327.0	GND CON 121.8 275.8	CLNC DEL 120.9 289.4
---------------	---------------------------------	------------------------------	------------------------	-------------------------



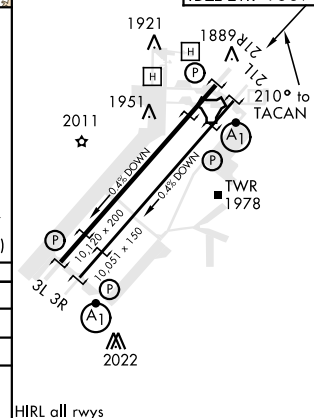
Knots	60	120	180	240	300	360
V <sub>AS</sub> (fpm)	383	766	1149	1532	1915	2298

Min climb of 383 ft/NM to 15,000 - Controlling Obstacle 6959  
 EMERG SAFE ALT 100 NM 14,000

15,000 LSV R-210 hdg 028° ARCOE R-358 VGS1 and descent angles not coincident (VGS1 Angle 3.00/TCH 54).



ELEV 1869	TDZE 21L 1865	TDZE 21R 1869
-----------	---------------	---------------



CATEGORY	C	D	E
S-21L *	2460-1 1/4	595 (600-1 1/4)	
SIDESTEP 21R	2460-1	591 (600-1)	
CIRCLING **	2620-2 1/4 751 (800-2 1/4)	2840-3 971 (1000-3)	3040-3 1171 (1200-3)

HIRL all rwys

# HI-TACAN Z RWY 21L

SW-4, 16 JUN 2022 to 14 JUL 2022

SW-4, 16 JUN 2022 to 14 JUL 2022