

SIN CITY VISUAL RWY 03L/R

AL-227 (USAF)

NELLIS AFB (KLSV)

LAS VEGAS, NEVADA

GASS PEAK
● 6943

ATIS 270.1
 NELLIS APP CON 124.95 273.55
 NELLIS TOWER 132.55 327.0
 GND CON 121.8 275.8

250 KIAS or less recommended
 no later than HASIL.
 Inbound course radial is for
 supplement visual guidance only.

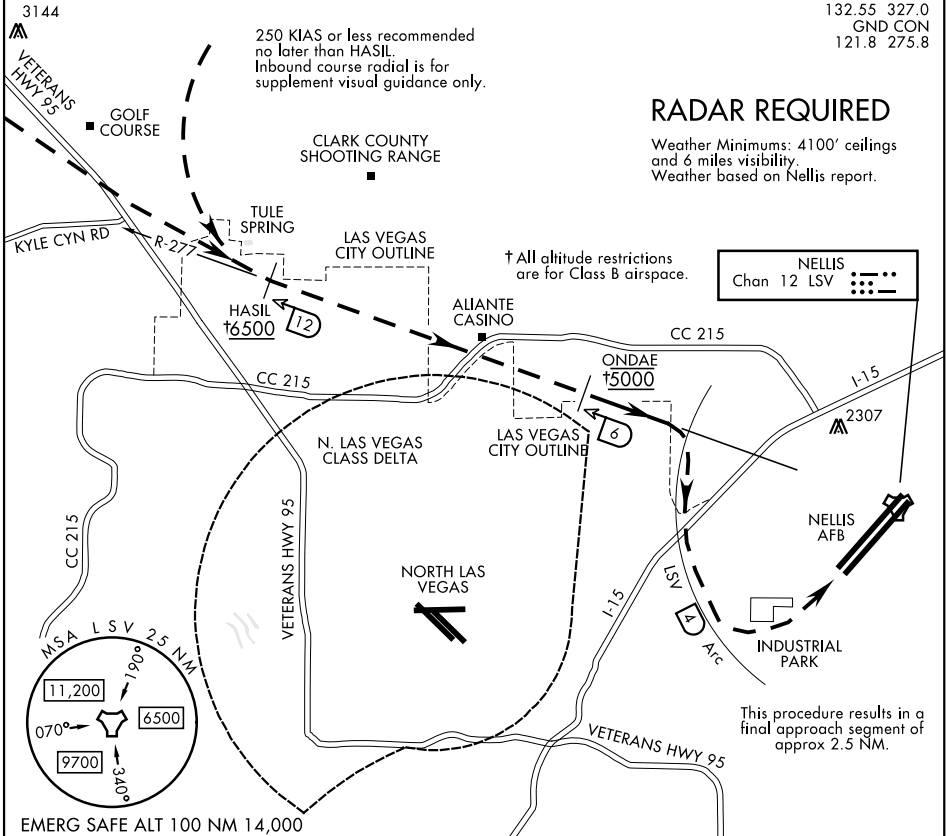
RADAR REQUIRED

Weather Minimums: 4100' ceilings
 and 6 miles visibility.
 Weather based on Nellis report.

CLARK COUNTY SHOOTING RANGE

† All altitude restrictions
 are for Class B airspace.

NELLIS
 Chan 12 LSV



This procedure results in a
 final approach segment of
 approx 2.5 NM.

EMERG SAFE ALT 100 NM 14,000

1	2	3	4	5	6	7	8	9	10	11	12	13	14	15	16
---	---	---	---	---	---	---	---	---	----	----	----	----	----	----	----

SIN CITY VISUAL RWY 03L/R

Expect RADAR vectors to HASIL (LSV TACAN R-277/12 DME) and report Northwest Las Vegas city outline in sight (ATC Clearance - "Cleared Sin City Visual Rwy 03 Approach")
 Cross HASIL at or above 6500, proceed visually via LSV R-277 and descend to cross ONDAE at 5000.

Based on traffic conditions, ATC may assign a different DME and/or an altitude to maintain until established visually on LSV R-277; pilots shall advise ATC if unable to comply with the revised clearance and any remaining published altitude restrictions. - example: "Cleared Sin City Visual Rwy 03 Approach via 10 DME, maintain (altitude) until established inbound on LSV R-277".

Continue visual descent in right turn to join LSV TACAN 4 DME Arc until extended final Rwy 03. Make base turn to remain within 4 DME to protect against Las Vegas Approach airspace/traffic. Tower will assign either RWY 03 L/R.

SIN CITY VISUAL RWY 03L/R

36°14'N-115°02'W

LAS VEGAS, NEVADA

NELLIS AFB (KLSV)

Amtd 2 29MAR18

SW-4, 16 JUN 2022 to 14 JUL 2022

SW-4, 16 JUN 2022 to 14 JUL 2022