


HI-ILS Z or LOC Z RWY 18

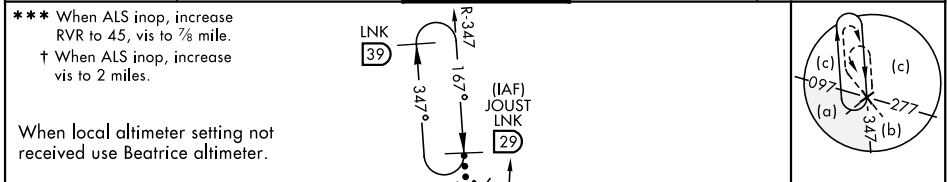
LOC I-OCZ 111.1	APCH CRS 177°	Rwy Idg 12,901 TDZE 1195 Arprt Elev 1219	AL-232 [USAF]	LINCOLN (KLNK)
---------------------------	-------------------------	---	---------------	----------------

DME, RADAR required for procedure entry.

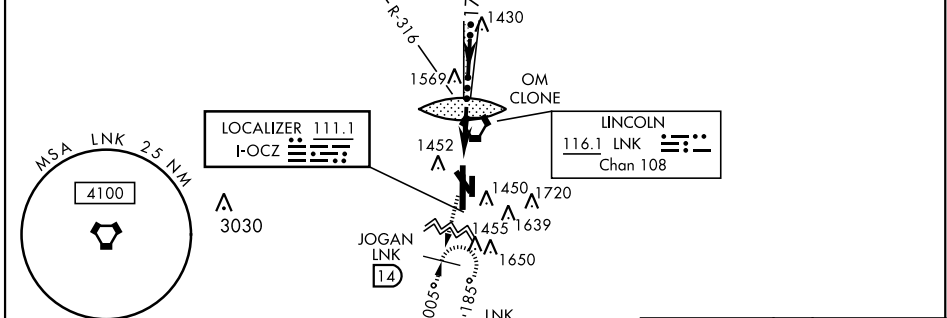
MALS  MISSED APPROACH: Climb to 3300 on LNK VORTAC R-185 to JOGAN (LNK 14 DME) and hold.

ATIS **118.05 290.9** **OMAHA APP CON** **124.0 270.3** **TOWER*** **118.5 253.5** **GND CON** **121.9 275.8** **CLNC DEL** **120.7 225.4**

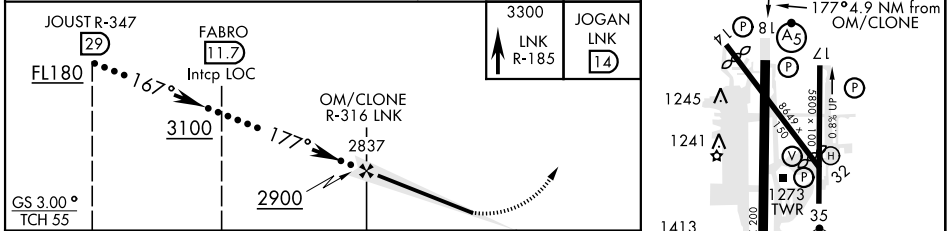
******* When ALS inop, increase RVR to 45, vis to ¾ mile.
† When ALS inop, increase vis to 1 ¾ miles.



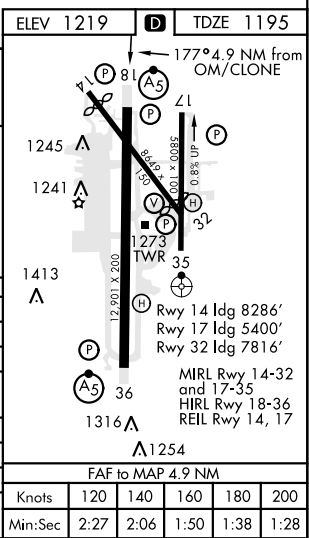
When local altimeter setting not received use Beatrice altimeter.



EMERG SAFE ALT 100 NM 4800



CATEGORY	C	D	E
S-ILS 18*	1395/24	200	(200-½)
S-LOC 18**	1820-1 ¾	625	(700-1 ¾)
CIRCLING	1820-1 ¾ 601 (700-1 ¾)	1820-2 601 (700-2)	2040-3 821 (900-3)
BEATRICE ALTIMETER SETTING			
S-ILS 18***	1486/24	291	(200-½)
S-LOC 18 †	1920-1 ¾	725	(800-1 ¾)
CIRCLING	1920-2 701 (800-2)	1920-2 ¼ 701 (800-2 ¼)	2140-3 ¼ 921 (1000-3 ¼)



HI-ILS Z or LOC Z RWY 18

NC-2, 16 JUN 2022 to 14 JUL 2022

NC-2, 16 JUN 2022 to 14 JUL 2022