

HI-ILS Z or LOC Z RWY 36

LOC I-LNK 109.9	APCH CRS 357°	Rwy Idg 12,901 TDZE 1175 Arprt Elev 1219	AL-232 [USAF]	LINCOLN (KLNK)
---------------------------	-------------------------	---	---------------	----------------

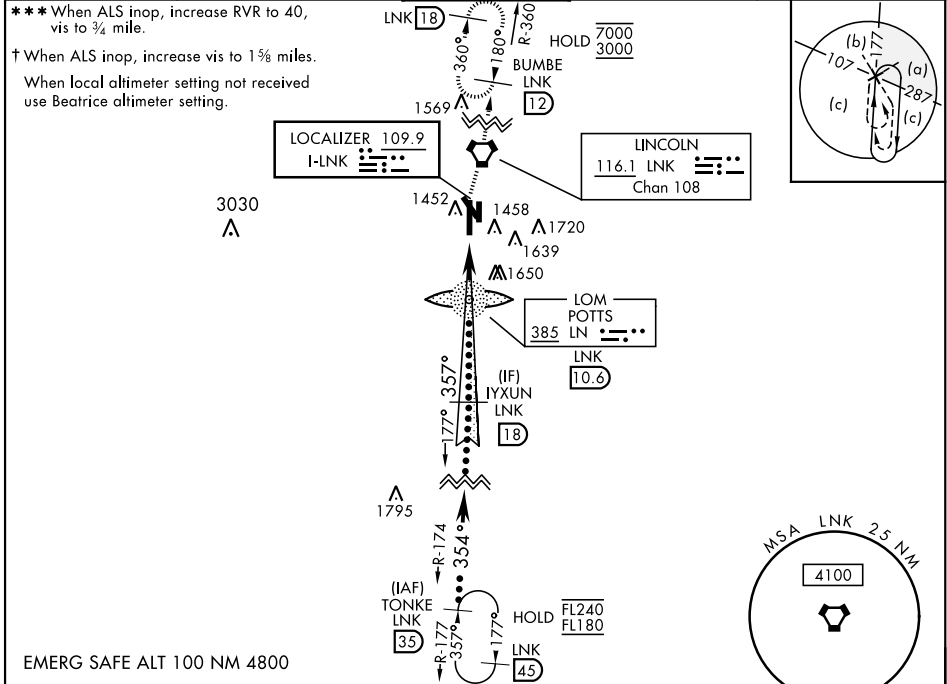
DME, RADAR required.

▼ * When ALS inop, increase RVR to 40, vis to ¾ mile.
** When ALS inop, increase vis to 1 ½ miles.

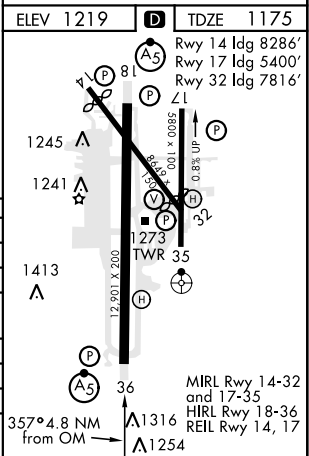
MALSRL A5

MISSED APPROACH: Climb to 1700 then climbing right turn to 3000 direct LNK VORTAC then via LNK R-360 to BUMBE 12 DME and hold.

ATIS 118.05 290.9	OMAHA APP CON 124.0 270.3	TOWER★ 118.5 253.5	GND CON 121.9 275.8	CLNC DEL 120.7 225.4
-----------------------------	-------------------------------------	------------------------------	-------------------------------	--------------------------------



1700	3000	BUMBE LNK 12	VGSI and glidepath not coincident.		TONKE R-174 FL180
VORTAC	JEMVI 7.8	2788	IYXUN Intcp LOC 18	354°	FL180
2800		357°	4000	35°	GS 3.00° TCH 56
2800		2.8 NM			
CATEGORY	C	D	E		
S-ILS 36 *	1375/24	200	(200-½)		
S-LOC 36 **	1620/45	445	(500-¾)		
CIRCLING	1760-1½	1820-2	2040-3		
	541 (600-1½)	601 (700-2)	821 (900-3)		
BEATRICE ALTIMETER SETTING					
S-ILS 36 ***	1466/24	291	(300-½)		
S-LOC 36 †	1720/60	545	(600-1½)		
CIRCLING	1820-2	1920-2¼	2140-3¼		
	601 (700-2)	701 (800-2¼)	921 (1000-3¼)		



HI-ILS Z or LOC Z RWY 36

NC-2, 16 JUN 2022 to 14 JUL 2022

NC-2, 16 JUN 2022 to 14 JUL 2022