

LOC FLNK <b>109.9</b>	APP CRS <b>357°</b>	Rwy Idg <b>12901</b>
		TDZE <b>1175</b>
		Apt Elev <b>1219</b>

# ILS Y or LOC Y RWY 36

LINCOLN (LNK)

**▼** For inop ALS when using Beatrice altimeter setting, increase S-ILS 36 all Cats visibility to RVR 4500, S-LOC 36 Cat E visibility to 1 3/4 SM. For inop ALS, increase S-ILS 36 Cat E visibility to RVR 4000, S-LOC 36 Cat E visibility to 1 3/4 SM. When local altimeter not received, use Beatrice altimeter setting and increase all DA to 1466 feet, and all MDA 100 feet, increase S-LOC 36 Cat C, D, and E visibility 3/8 SM, Circling Cat C and D visibility 1/4 SM. \*RVR 1800 authorized with use of FD or AP or HUD to DA (NA when using Beatrice altimeter setting).

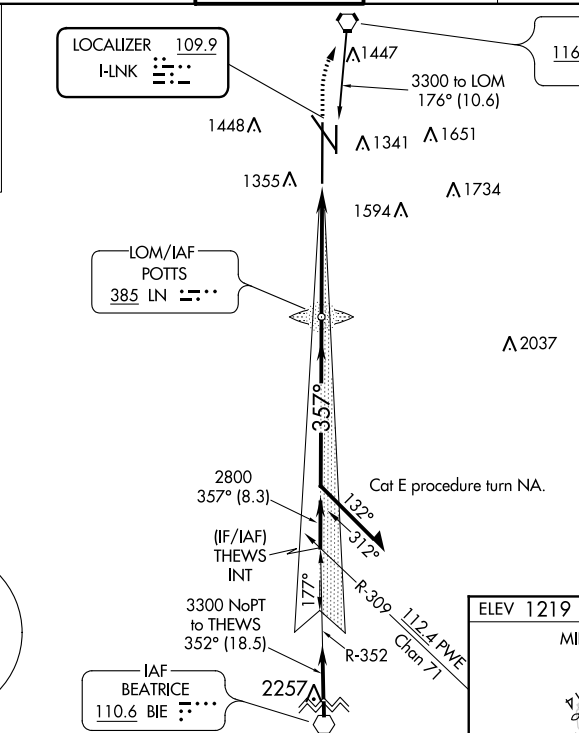
**MALS**

**MISSED APPROACH:**  
Climb to 1700 then climbing right turn to 3000 direct LNK VORTAC and hold.

ATIS <b>118.05 290.9</b>	OMAHA APP CON <b>124.0 270.3</b>	LINCOLN TOWER* <b>118.5 (CTAF) 253.5</b>	GND CON <b>121.9 275.8</b>	CLNC DEL <b>120.7 225.4</b>	UNICOM <b>122.95</b>
-----------------------------	-------------------------------------	---	-------------------------------	--------------------------------	-------------------------

**MISSED APCH FIX**

R-005  
LINCOLN LNK 116.1 Chan 108

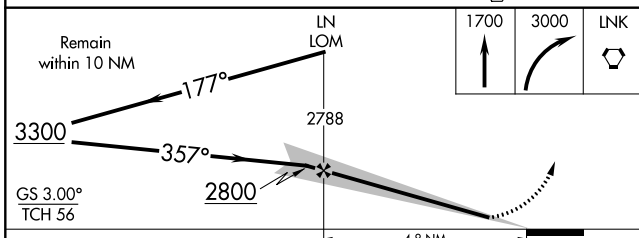


**LINCOLN**  
116.1 LNK Chan 108

**ALTERNATE MISSED APCH FIX**

POTTS LN 385

**MSA LN 25 NM**  
4100



ELEV 1219 **D** TDZE 1175

MIRL Rwy 14-32 and 17-35  
REIL Rwy 14 and 17  
HIRL Rwy 18-36

1241  
81  
1200 X 200  
TWR 1280  
36  
357° 4.8 NM from FAF

FAF to MAP 4.8 NM

Knots	60	90	120	150	180
Min:Sec	4:48	3:12	2:24	1:55	1:36

CATEGORY	A	B	C	D	E
S-ILS 36*	1375/24 200 (200-1/2)				
S-LOC 36	1680/24	505 (500-1/2)	1680/55	505 (500-1)	
CIRCLING	1680-1 461 (500-1)	1760-1 541 (600-1)	1760-1 1/2 541 (600-1 1/2)	1820-2 601 (700-2)	2040-3 821 (900-3)

NC-2, 16 JUN 2022 to 14 JUL 2022

NC-2, 16 JUN 2022 to 14 JUL 2022