
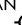




DARBY EIGHT ARRIVAL

LOUISVILLE, KENTUCKY

LOUISVILLE APP CON
 132.075 327.0
 LOU ATIS
 124.15
 SDF D-ATIS
 118.725

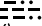
CLARK RGNL 
 BOWMAN FLD 
 LOUISVILLE MUHAMMAD ALI INTL 

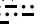
NOTE: RADAR required.
 NOTE: DME required for LONDON and UNCKL transitions.

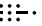
LOUISVILLE
 114.8 IIIU 
 Chan 95
 N38° 06.21'
 W85° 34.65'

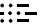
DARBY
 N37° 39.26'
 W84° 57.21'

UNCKL
 N37° 28.88'
 W84° 42.98'
 L-26, H-10

LONDON
 116.55 LOZ 
 Chan 112(Y)
 N37° 01.99' - W84° 06.60'
 L-26, H-9

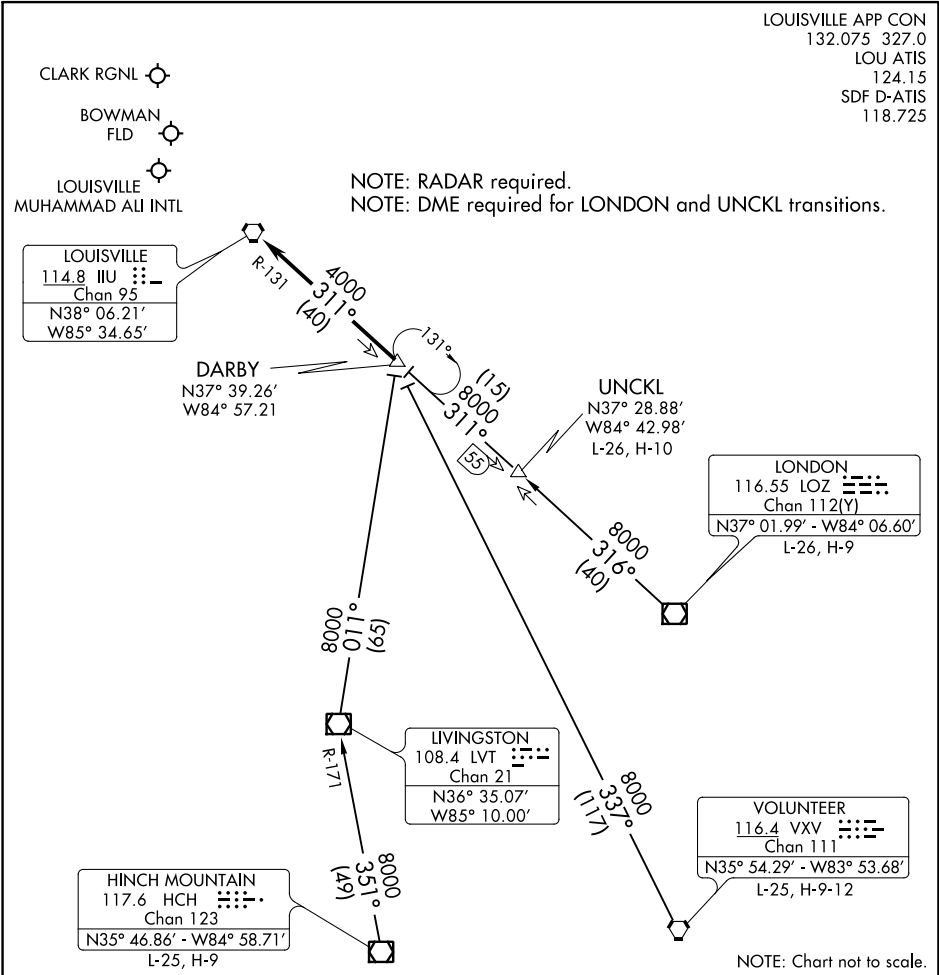
LIVINGSTON
 108.4 LVT 
 Chan 21
 N36° 35.07'
 W85° 10.00'

HINCH MOUNTAIN
 117.6 HCH 
 Chan 123
 N35° 46.86' - W84° 58.71'
 L-25, H-9

VOLUNTEER
 116.4 VXV 
 Chan 111
 N35° 54.29' - W83° 53.68'
 L-25, H-9-12

SE-1, 16 JUN 2022 to 14 JUL 2022

SE-1, 16 JUN 2022 to 14 JUL 2022



NOTE: Chart not to scale.

ARRIVAL ROUTE DESCRIPTION

HINCH MOUNTAIN TRANSITION (HCH.DARBY8): From over HCH VOR/DME on HCH R-351 and LVT R-171 to LVT VOR/DME, then on LVT R-011 to DARBY. Thence. . .

LONDON TRANSITION (LOZ.DARBY8): From over LOZ VOR/DME on LOZ R-316 to UNCKL, then on IIIU R-131 to DARBY. Thence. . .

UNCKL TRANSITION (UNCKL.DARBY8): From over UNCKL on IIIU R-131 to DARBY. Thence. . .

VOLUNTEER TRANSITION (VXV.DARBY8): From over VXV VORTAC on VXV R-337 to DARBY. Thence. . .

. . . from DARBY on IIIU R-131 to IIIU VORTAC. Expect RADAR vectors to final course.