

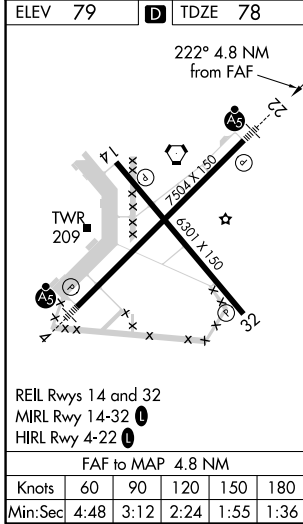
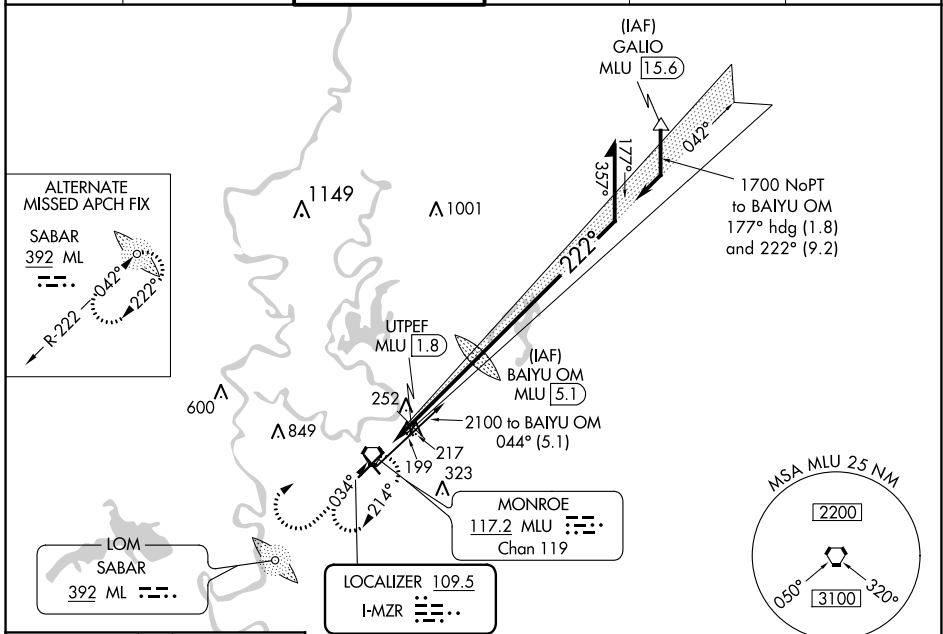
LOC I-MZR 109.5	APP CRS 222°	Rwy Idg TDZE Apt Elev	7504 78 79
---------------------------	------------------------	-----------------------------	---------------------------------------

ILS or LOC RWY 22

MONROE RGNL (MLU)

DME or RADAR required for procedure entry.		MALSR 	MISSED APPROACH: Climb to 1800 then climbing right turn to 3000 direct MLU VORTAC and hold, continue climb-in-hold to 3000.	
 Circling Rwy 14 NA at night. For inop ALS, increase S-LOC 22 Cat C/D visibility to 1 1/2 SM. # DME from MLU VORTAC.				

ATIS 125.05	MONROE APP CON ★ 118.15 290.475	MONROE TOWER ★ 118.9 (CTAF) 257.8	GND CON 121.9	CLNC DEL 121.65	UNICOM 122.95
-----------------------	---	---	-------------------------	---------------------------	-------------------------



ELEV 79	TDZE 78	1800	3000	MLU	VGSi and ILS glidepath not coincident (VGSi Angle 3.00/TCH 54).				
		*LOC only.			UTPEF MLU [1.8] 1675 042° 2100 222° 1700 GS 3.00° TCH 54				
					-1.4 NM - 3.4 NM				
CATEGORY	A		B		C		D		
S-ILS 22	278-1/2		200 (200-1/2)						
S-LOC 22	560-1/2		482 (500-1/2)		560-1		482 (500-1)		
CIRCLING	580-1		501 (600-1)		740-1 3/4		1160-3		
					661 (700-1 3/4)		1081 (1100-3)		
# UTEPF FIX MINIMUMS									
S-LOC 22	500-1/2		422 (500-1/2)		500-3/4		422 (500-3/4)		
CIRCLING	580-1		501 (600-1)		740-1 3/4		1160-3		
					661 (700-1 3/4)		1081 (1100-3)		

SC-4, 16 JUN 2022 to 14 JUL 2022

SC-4, 16 JUN 2022 to 14 JUL 2022