

WAAS CH 56428 W32A	APP CRS 317°	Rwy ldg 6301 TDZE 76 Apt Elev 79
--	------------------------	---

RNAV (GPS) RWY 32

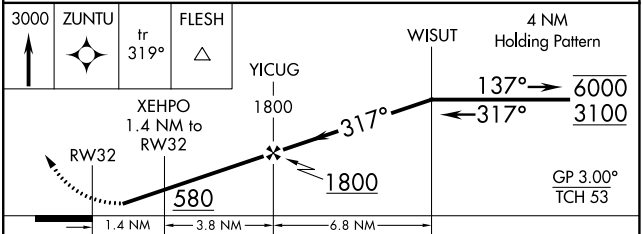
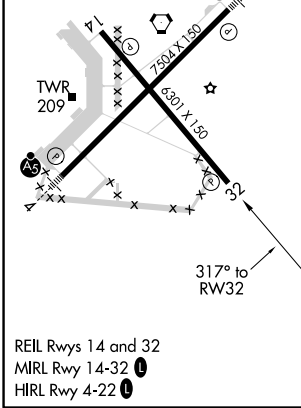
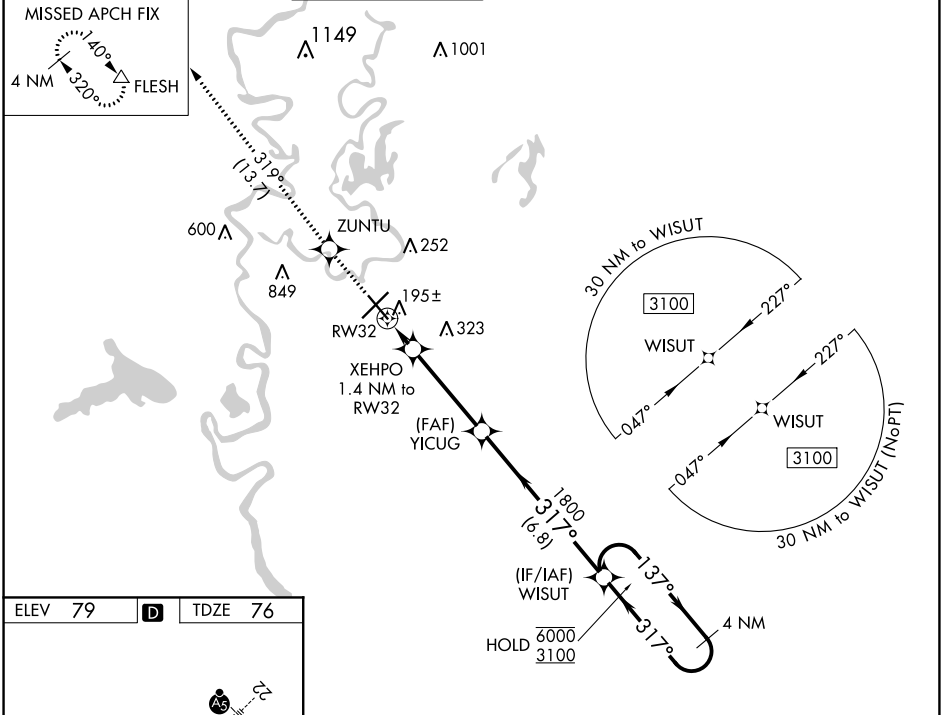
MONROE RGNL (MLU)

RNP APCH - GPS.

ASR Rwy 32 helicopter visibility reduction below 3/4 SM NA.
For uncompensated Baro-VNAV systems, procedure NA below -5°C or above 54°C. Circling Rwy 14 NA at night.

MISSED APPROACH: Climb to 3000 direct ZUNTU and on track 319° to FLESH and hold.

ATIS 125.05	MONROE APP CON * 118.15 290.475	MONROE TOWER * 118.9 (CTAF) 257.8	GND CON 121.9	CLNC DEL 121.65	UNICOM 122.95
-----------------------	---	---	-------------------------	---------------------------	-------------------------



CATEGORY	A	B	C	D
LPV DA		326-1	250 (300-1)	
LNVA/VNAV DA		356-1	280 (300-1)	
LNVA MDA	460-1	384 (400-1)	460-1 1/8 384 (400-1 1/8)	
C CIRCLING	540-1 461 (500-1)	580-1 501 (600-1)	740-1 3/4 661 (700-1 3/4)	1160-3 1081 (1100-3)

SC-4, 16 JUN 2022 to 14 JUL 2022

SC-4, 16 JUN 2022 to 14 JUL 2022