

LOC I-MSL 109.7	APP CRS 297°	Rwy Idg 6694	TDZE 551
		Apt Elev 551	

ILS Y or LOC Y RWY 30

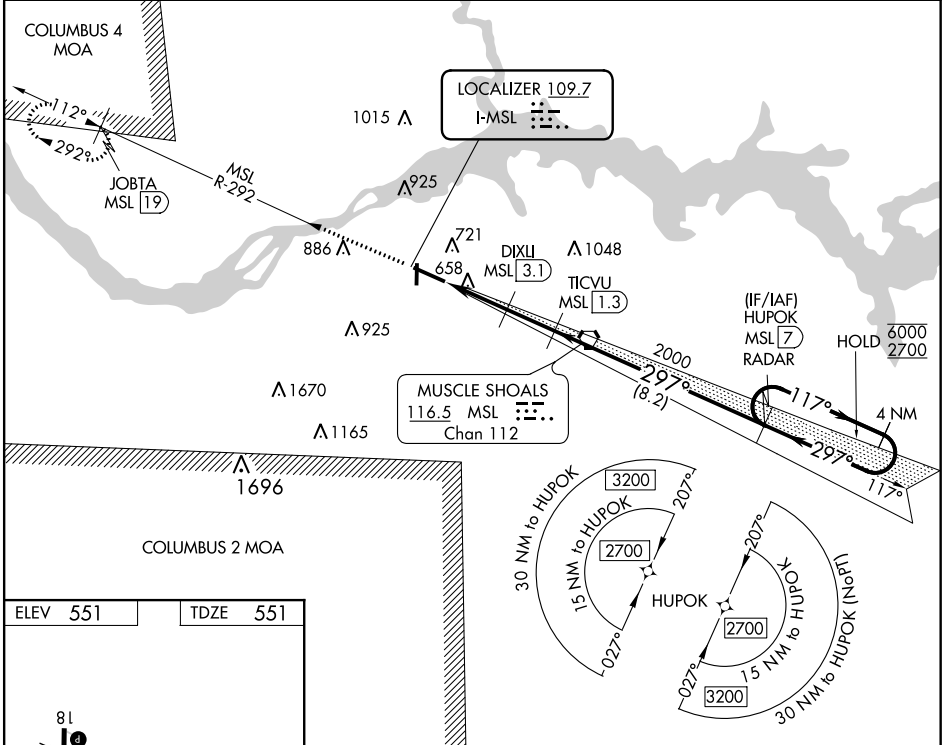
NORTHWEST ALABAMA RGNL (MSL)

RNAV 1-GPS or RADAR required for procedure entry. DME required.

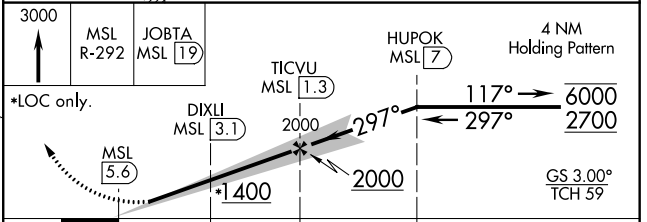
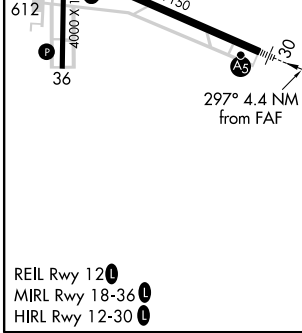
⚠ When local altimeter setting not received, use Decatur altimeter setting: Increase DA to 833 feet and all MDA 100 feet; Increase S-LOC 30 Cat C, D visibility $\frac{3}{8}$ SM and Circling Cat C, D visibility $\frac{1}{2}$ SM. DME from MSL VORTAC. Simultaneous reception of I-MSL and MSL DME required. For inop ALS increase S-LOC 30 Cats C/D visibility to 1 SM. For inop ALS when using Decatur altimeter setting, increase S-ILS 30 all Cats visibility to $\frac{3}{8}$ SM, and increase S-LOC 30 Cats C/D to $1\frac{3}{8}$ SM.

MALS R MISSED APPROACH: Climb to 3000 on MSL VORTAC R-292 to JOBTA/MSL 19 DME and hold.

ASOS 119.425	MEMPHIS CENTER 120.8 307.0	GCO 121.725	UNICOM 123.05 (CTAF) 0
------------------------	--------------------------------------	-----------------------	----------------------------------



ELEV 551	TDZE 551
----------	----------



CATEGORY	A	B	C	D
S-ILS 30	751- $\frac{1}{2}$		200 (200- $\frac{1}{2}$)	
S-LOC 30	920- $\frac{1}{2}$	369 (400- $\frac{1}{2}$)	920- $\frac{5}{8}$	369 (400- $\frac{5}{8}$)
C CIRCLING	1040-1	489 (500-1)	1280-2 729 (800-2)	1280-2 $\frac{1}{4}$ 729 (800-2 $\frac{1}{4}$)

SE-4, 16 JUN 2022 to 14 JUL 2022

SE-4, 16 JUN 2022 to 14 JUL 2022