

WAAS CH <b>56435</b> <b>W18A</b>	APP CRS <b>184°</b>	Rwy Idg <b>4000</b> TDZE <b>547</b> Apt Elev <b>551</b>
--	------------------------	---

# RNAV (GPS) RWY 18

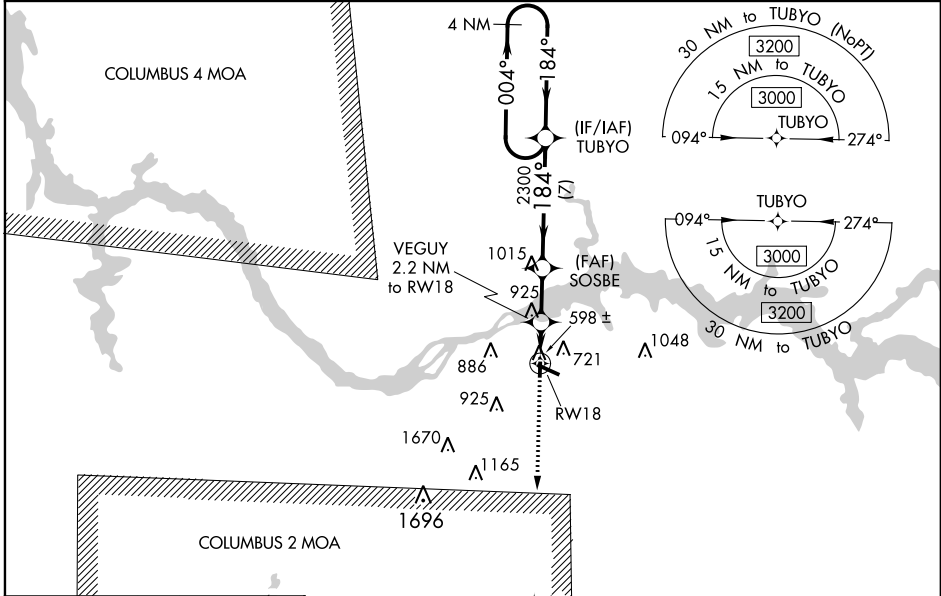
NORTHWEST ALABAMA RGNL (MSL)

RNP APCH.

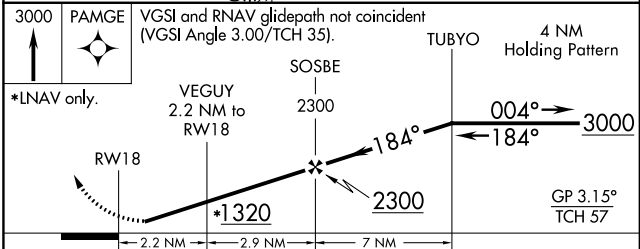
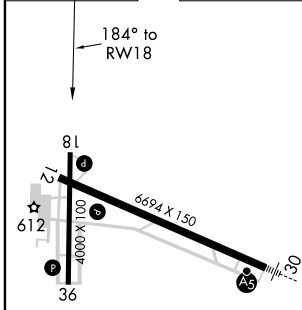
**⚠** Baro-VNAV NA when using Decatur altimeter setting. For uncompensated Baro-VNAV systems, LNAV/VNAV NA below -4°C (25°F) or above 54°C (130°F). Rwy 18 helicopter visibility reduction below ¼ SM NA. When local altimeter setting not received, use Decatur altimeter setting and increase LPV DA to 880, LNAV/VNAV DA to 1065 and all MDA 100 feet, increase LNAV Cat C visibility ¼ SM, increase Circling Cat C visibility ½ SM.

**MISSED APPROACH:**  
Climb to 3000 direct PAMGE and hold.

ASOS <b>119.425</b>	MEMPHIS CENTER <b>120.8 307.0</b>	GCO <b>121.725</b>	UNICOM <b>123.05 (CTAF) 0</b>
------------------------	--------------------------------------	-----------------------	----------------------------------



ELEV	<b>551</b>	TDZE	<b>547</b>
------	------------	------	------------



CATEGORY	A	B	C	D
LPV DA		797-1	250 (300-1)	NA
LNAV/VNAV DA		982-1 3/8	435 (500-1 3/8)	NA
LNAV MDA	960-1	413 (500-1)	960-1 1/4 413 (500-1 1/4)	NA
<b>C</b> CIRCLING	1040-1	489 (500-1)	1280-2 729 (800-2)	NA

- REIL Rwy 12 **0**
- MIRL Rwy 18-36 **0**
- HIRL Rwy 12-30 **0**

SE-4, 16 JUN 2022 to 14 JUL 2022

SE-4, 16 JUN 2022 to 14 JUL 2022