

WAAS CH <b>40000</b> <b>W30A</b>	APP CRS <b>297°</b>	Rwy Idg TDZE <b>551</b> Apt Elev <b>551</b>	<b>6694</b>
--	------------------------	---	-------------

# RNAV (GPS) RWY 30

NORTHWEST ALABAMA RGNL (MISL)

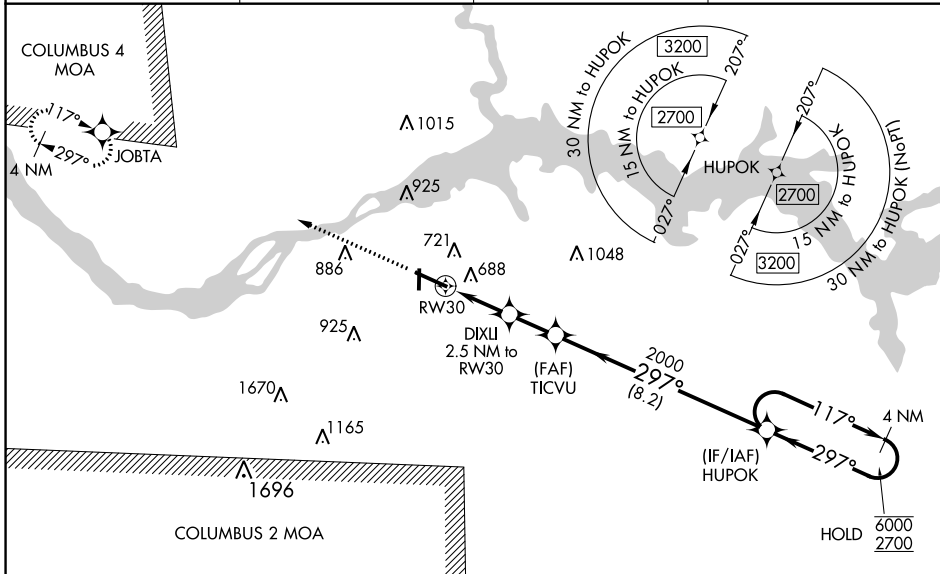
**RNP APCH**

For uncompensated Baro-VNAV systems, LNAV/VNAV NA below -4°C or above 54°C. When local altimeter setting not received use Decatur altimeter setting and increase LPV DA to 834, LNAV/VNAV DA to 1045 and all MDA 100 feet; increase LNAV/VNAV all Cats visibility ¼ SM, and LNAV Cat C and D visibility ⅓ SM, and Circling Cat C and D visibility ½ SM. Baro-VNAV and VDP NA when using Decatur altimeter setting. For inop ALS when using Decatur altimeter setting, increase LPV all cats visibility to ⅓ SM, and LNAV Cats C and D visibility to 1⅓ SM.

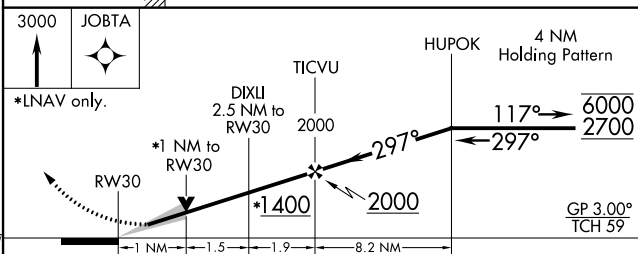
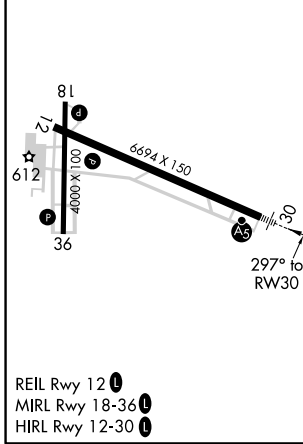


**MISSED APPROACH:**  
Climb to 3000 direct JOBTA and hold.

ASOS <b>119.425</b>	MEMPHIS CENTER <b>120.8 307.0</b>	GCO <b>121.725</b>	UNICOM <b>123.05 (CTAF)</b>
------------------------	--------------------------------------	-----------------------	--------------------------------



ELEV <b>551</b>	TDZE <b>551</b>
-----------------	-----------------



CATEGORY	A	B	C	D
LPV DA		751-½	200 (200-½)	
LNAV/VNAV DA		962-⅞	411 (500-⅞)	
LNAV MDA	940-½	389 (400-½)	940-⅝	389 (400-⅝)
<b>C</b> CIRCLING	1040-1	489 (500-1)	1280-2 729 (800-2)	1280-2¼ 729 (800-2¼)

SE-4, 16 JUN 2022 to 14 JUL 2022

SE-4, 16 JUN 2022 to 14 JUL 2022