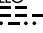

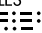


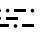
TERKS TWO ARRIVAL

NORFOLK APP CON
 118.9 353.7
 NGU ATIS
 118.425 342.0
 NTU ATIS ★
 317.6
 ORF ATIS
 127.15

MONTEBELLO
 115.3 MOL 
 Chan 100
 N37°54.03'-W79°06.41'
 L-26, H-10-12

HARCUM
 108.8 HCM 
 Chan 25
 N37°26.92'-W76°42.68'

CAPE CHARLES
 112.2 CCV 
 Chan 59
 N37°20.85'-W75°59.86'

FLAT ROCK
 113.3 FAK 
 Chan 80
 N37°31.71'-W77°49.69'

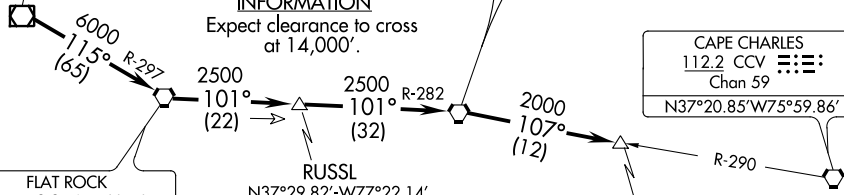
TURBOJET VERTICAL NAVIGATION PLANNING INFORMATION
 Expect clearance to cross at 14,000'.

TURBOJET VERTICAL NAVIGATION PLANNING INFORMATION
 Expect clearance to cross at 16,000'.

TURBOJET VERTICAL NAVIGATION PLANNING INFORMATION
 Expect clearance to cross 20 NM west at FL 210.

NOTE: For aircraft at or above 14,000' only.

NOTE: Chart not to scale.



NORFOLK NS (CHAMBERS FIELD)

NORFOLK INTL

HAMPTON ROADS

OCEANA NAS/ APOLLO SOUCEK FIELD

SUFFOLK EXECUTIVE

CHESAPEAKE RGNL

From over MOL VOR/DME via R-115 and FAK R-297 to FAK VORTAC, then via FAK R-101 and HCM R-282 to HCM VORTAC, then via HCM R-107 and CCV R-290 to TERKS INT. Expect radar vectors to the final approach course after the TERKS INT.

TERKS TWO ARRIVAL

NE-3, 16 JUN 2022 to 14 JUL 2022

NE-3, 16 JUN 2022 to 14 JUL 2022