

WAAS CH 53630 W13A	APP CRS 132°	Rwy Idg 5001 TDZE 13 Apt Elev 14
---------------------------------	------------------------	---

RNAV (GPS) RWY 13

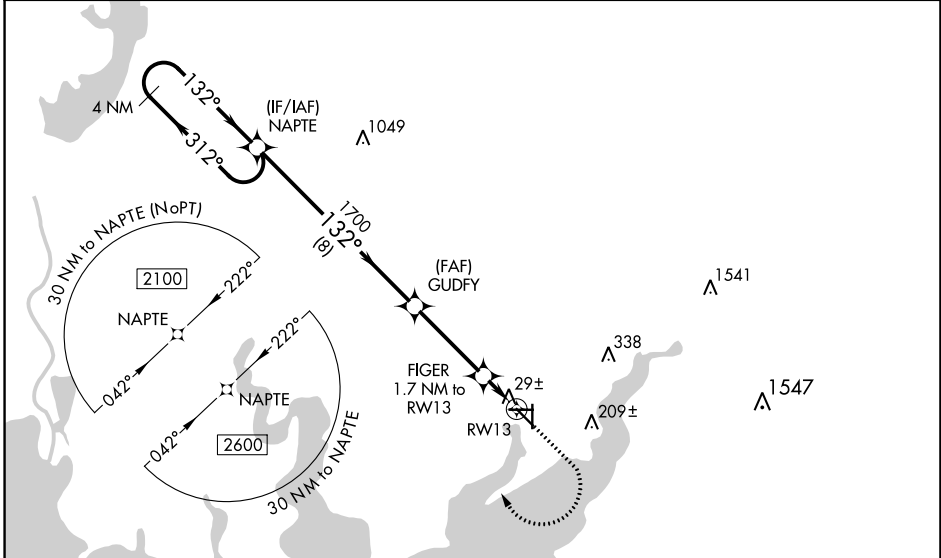
PALACIOS MUNI (PSX)

RNP APCH.

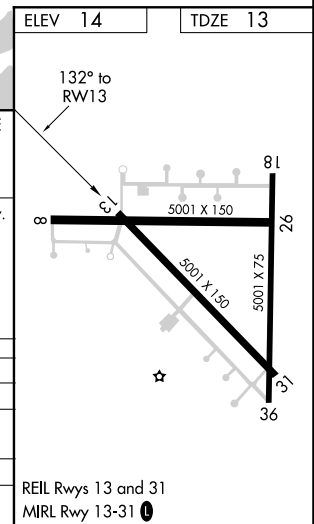
▼ For uncompensated Baro-VNAV systems, LNAV/VNAV NA below -20°C or above 54°C.
 ▲ When local altimeter setting not received, use Port Lavaca altimeter setting: Increase DA to 319 feet and visibility all Cats 1/2 SM; increase all MDA 60 feet and LNAV Cat C/D and Circling Cat C/D visibility 1/4 SM. Baro-VNAV and VDP NA when using Port Lavaca altimeter setting. Rwy 13 helicopter visibility reduction below 3/4 SM NA. Circling Rwy 8, 18, 26, 31, 36 NA at night.

MISSED APPROACH:
 Climb to 500 then climbing right turn to 2100 direct NAPTE and hold.

ASOS 118.025	HOUSTON CENTER 128.6 360.8	UNICOM 122.8 (CTAF)
------------------------	--------------------------------------	-------------------------------



4 NM Holding Pattern		NAPTE		500		2100		NAPTE	
2100 ← 312°		→ 132°		1700		*580		*LNAV only.	
GP 3.00°		TCH 40		8 NM		3.5 NM		1 NM	
								0.7 NM	
CATEGORY	A	B	C	D					
LPV DA	263-7/8		250 (300-7/8)						
LNAV/VNAV DA	263-7/8		250 (300-7/8)						
LNAV MDA	280-1 267 (300-1)		280-7/8 267 (300-7/8)						
CIRCLING	460-1 446 (500-1)		480-1 466 (500-1)		560-1 1/2 546 (600-1 1/2)		700-2 1/4 686 (700-2 1/4)		



SC-5, 16 JUN 2022 to 14 JUL 2022

SC-5, 16 JUN 2022 to 14 JUL 2022