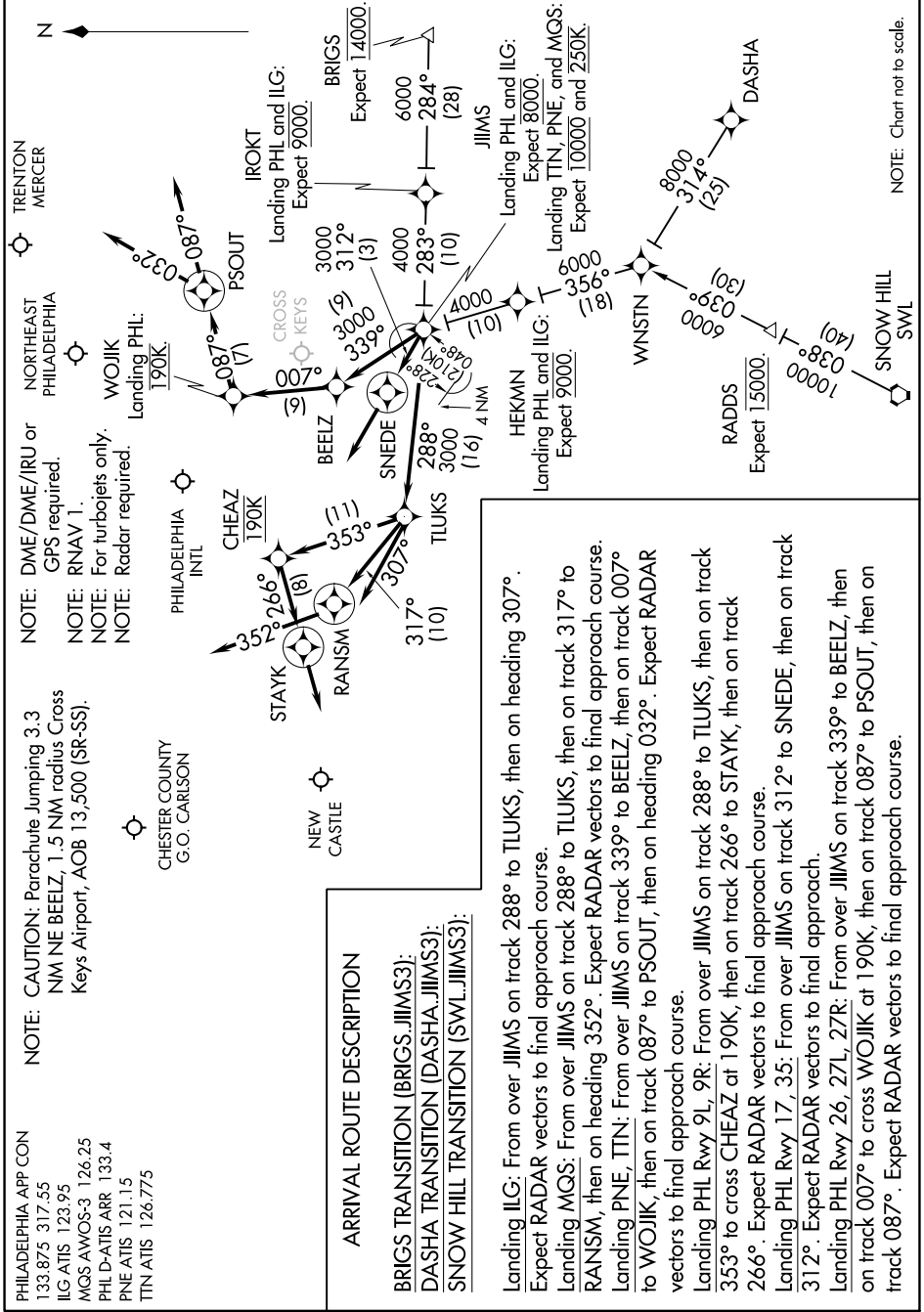


# JIIIMS THREE ARRIVAL (RNAV)

PHILADELPHIA, PENNSYLVANIA

NE-4, 16 JUN 2022 to 14 JUL 2022



PHILADELPHIA APP CON  
133.875 317.55  
ILG ATIS 123.95  
MGS AWOS-3 126.25  
PHL D-ATIS ARR 133.4  
PNE ATIS 121.15  
TTN ATIS 126.775

NOTE: CAUTION: Parachute Jumping 3.3 NM NE BEELZ, 1.5 NM radius Cross Keys Airport, AOB 13,500 (SR-SS).  
NOTE: RNAV 1.  
NOTE: For turbojets only.  
NOTE: Radar required.

### ARRIVAL ROUTE DESCRIPTION

**BRIGS TRANSITION (BRIGS.JIIMS3):**  
**DASHA TRANSITION (DASHA.JIIMS3):**  
**SNOW HILL TRANSITION (SWL.JIIMS3):**

Landing ILG: From over JIIIMS on track 288° to TLUKS, then on heading 307°. Expect RADAR vectors to final approach course.  
Landing MGS: From over JIIIMS on track 288° to TLUKS, then on track 317° to RANSM, then on heading 352°. Expect RADAR vectors to final approach course.  
Landing PNE, TTN: From over JIIIMS on track 339° to BEELZ, then on track 007° to WOJJK, then on track 087° to PSOUT, then on heading 032°. Expect RADAR vectors to final approach course.  
Landing PHL Rwy 9L, 9R: From over JIIIMS on track 288° to TLUKS, then on track 353° to cross CHEAZ at 190K, then on track 266° to STAYK, then on track 266°. Expect RADAR vectors to final approach course.  
Landing PHL Rwy 17, 35: From over JIIIMS on track 312° to SNEDE, then on track 312°. Expect RADAR vectors to final approach.  
Landing PHL Rwy 26, 27L, 27R: From over JIIIMS on track 339° to BEELZ, then on track 007° to cross WOJJK at 190K, then on track 087° to PSOUT, then on track 087°. Expect RADAR vectors to final approach course.

# JIIIMS THREE ARRIVAL (RNAV)

PHILADELPHIA, PENNSYLVANIA

NE-4, 16 JUN 2022 to 14 JUL 2022