

LOC/DME I-PWM <b>109.9</b> Chan <b>36</b>	APP CRS <b>110°</b>	Rwy Idg <b>7200</b> TDZE <b>76</b> Apt Elev <b>76</b>
-------------------------------------------------	------------------------	-------------------------------------------------------------

# ILS RWY 11 (CAT II & III)

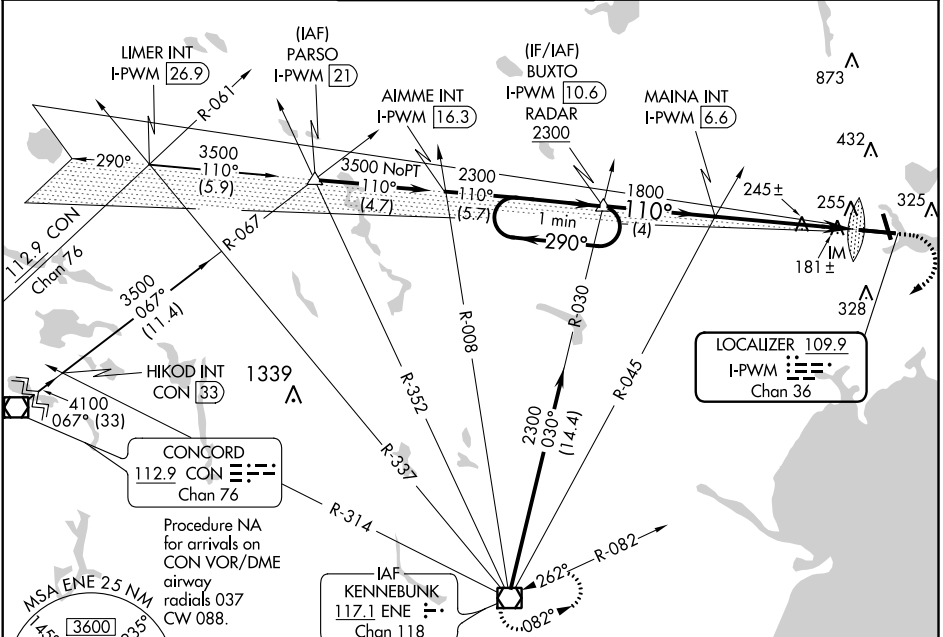
PORTLAND INTL JETPORT (PWM)

**Procedure NA when control tower closed.**

ALS-F-2

MISSED APPROACH: Climb to 600 then climbing right turn to 3000 direct ENE VOR/DME and hold.

ATIS <b>119.05</b>	PORTLAND APP CON * <b>119.75 269.35</b>	PORTLAND TOWER * <b>120.9 (CTAF) 257.8</b>	GND CON <b>121.9</b>	CLNC DEL <b>121.9</b>	UNICOM <b>122.95</b>
-----------------------	--------------------------------------------	-----------------------------------------------	-------------------------	--------------------------	-------------------------



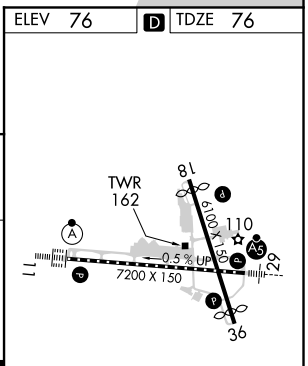
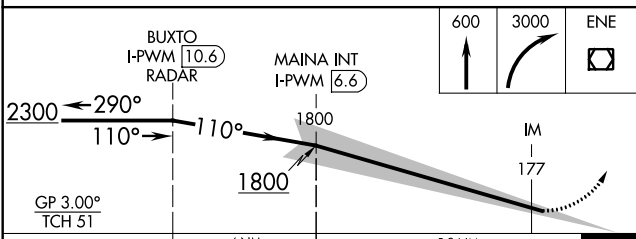
NE-1, 16 JUN 2022 to 14 JUL 2022

NE-1, 16 JUN 2022 to 14 JUL 2022

ELEV 76 TDZE 76

Procedure NA for arrivals on CON VOR/DME airway radials 037 CW 088.

Procedure NA for arrivals on ENE VOR/DME airway radial 062.



CATEGORY	A	B	C	D
S-ILS 11	CAT II RA 108/12		100 DA 176	
S-ILS 11	CAT III RVR 06			

**CATEGORY II & III ILS-SPECIAL AIRCREW & AIRCRAFT CERTIFICATION REQUIRED**

- TDZ/CL Rwy 11
- MIRL Rwy 18-36
- HIRL Rwy 11-29
- REIL Rwy 18 and 36