

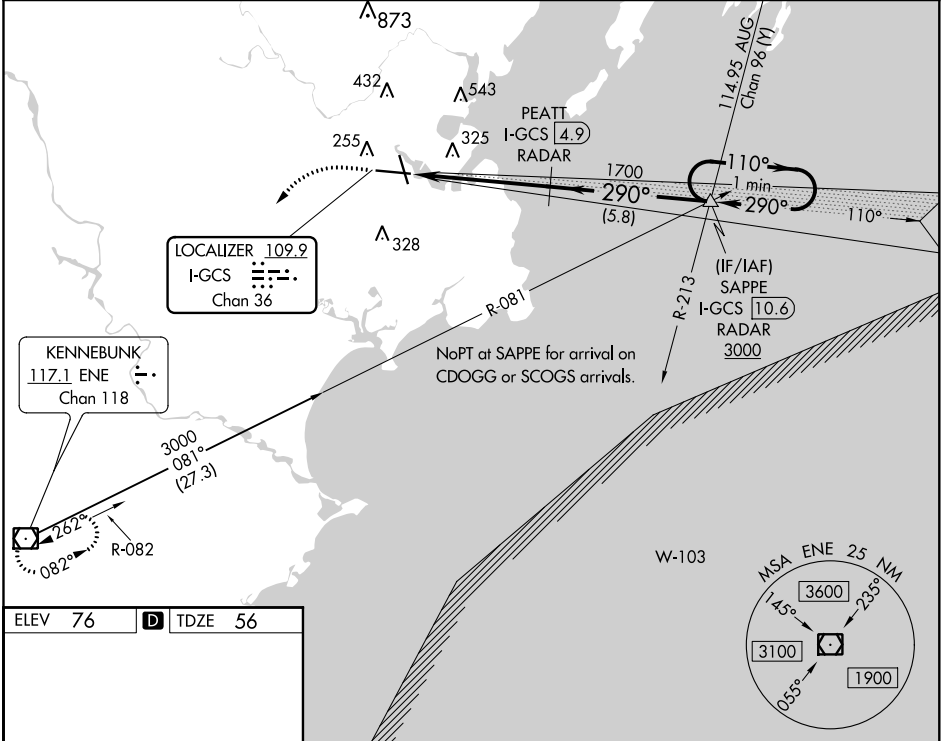
LOC/DME I-GCS 109.9 Chan 36	APP CRS 290°	Rwy Idg TDZE Apt Elev	7200 56 76
---	------------------------	-----------------------------	---------------------------------------

ILS RWY 29 (SA CAT I & II)

PORTLAND INTL JETPORT (PWM)

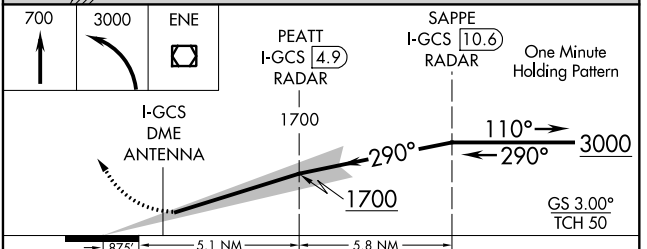
<p>⚠ DME or RADAR required. DME required when Portland approach control closed. Procedure NA when control tower closed. SA CAT I: Requires specific OPSPEC, MSPEC, or LOA approval and use of HUD to DH. SA CAT II: Reduced lighting requires specific OPSPEC, MSPEC, or LOA approval and use of Autoland or HUD to touchdown.</p>	<p>MALSR</p>	<p>MISSED APPROACH: Climb to 700 then climbing left turn to 3000 direct ENE VOR/DME and hold.</p>

ATIS 119.05	PORTLAND APP CON * 119.75 269.35	PORTLAND TOWER * 120.9 (CTAF) 257.8	GND CON 121.9	CLNC DEL 121.9	UNICOM 122.95
-----------------------	--	--	-------------------------	--------------------------	-------------------------



ELEV 76	D	TDZE 56
---------	----------	---------

TDZ/CL Rwy 11 **⚠**
 MIRL Rwy 18-36 **⚠**
 HIRL Rwy 11-29 **⚠**
 REL Rwy 18 and 36 **⚠**



CATEGORY	A	B	C	D
S-ILS 29	SA CAT I	RA 206/14	150 DA 206	
S-ILS 29	SA CAT II	RA 146/12	100 DA 156	

SA CATEGORY I & II ILS - SPECIAL AIRCREW & AIRCRAFT CERTIFICATION REQUIRED

NE-1, 16 JUN 2022 to 14 JUL 2022

NE-1, 16 JUN 2022 to 14 JUL 2022