

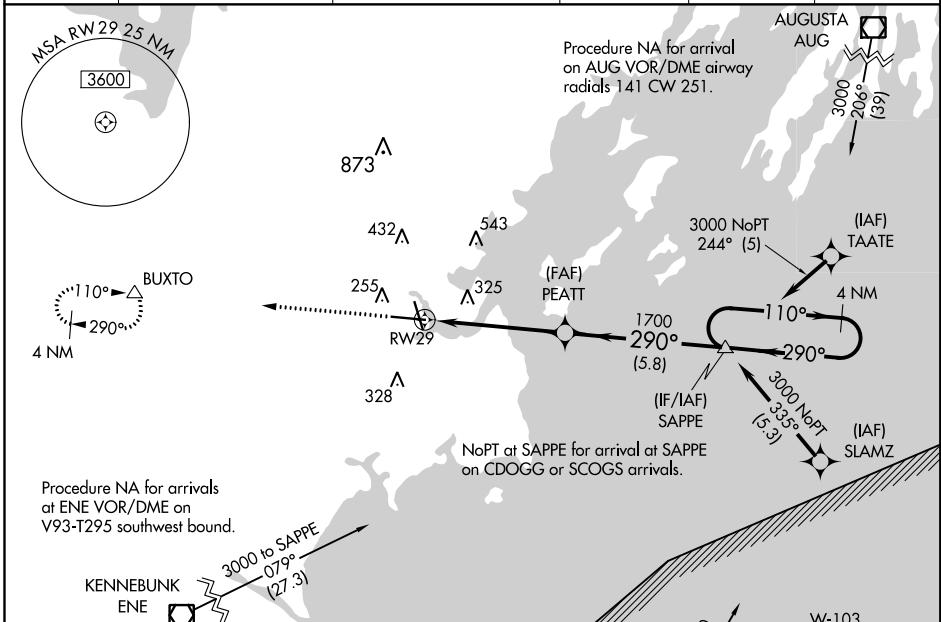
WAAS CH 65626 W29A	APP CRS 290°	Rwy Idg 7200 TDZE 56 Apt Elev 76
--	------------------------	---

RNAV (GPS) RWY 29

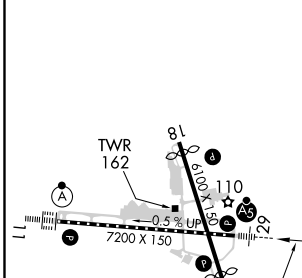
PORTLAND INTL JETPORT (P'WM)

RNP APCH	MALSR 	MISSED APPROACH: Climb to 3000 direct BUXTO and hold, continue climb-in-hold to 3000.
<p>For uncompensated Baro-VNAV systems, LNAV/VNAV NA below -18°C or above 54°C. For inop MALSR, increase LNAV/VNAV all Cats visibility to 1 1/2 mile, increase LNAV Cat C/D visibility to 1 3/8 mile. **RVR 1800 authorized with use of FD or AP or HUD to DA.</p>		

ATIS 119.05	PORTLAND APP CON ★ 119.75 269.35	PORTLAND TOWER ★ 120.9 (CTAF) 257.8	GND CON 121.9	CLNC DEL 121.9	UNICOM 122.95
-----------------------	--	---	-------------------------	--------------------------	-------------------------



ELEV 76	D	TDZE 56
---------	----------	---------



CATEGORY	A	B	C	D
LPV DA	** 256/24 200 (200-1/2)			
LNAV/VNAV DA	567-1 3/8 511 (500-1 3/8)			
LNAV MDA	580/24	524 (600-1/2)	580/55	524 (600-1)
C CIRCLING	620-1 544 (600-1)	640-1 564 (600-1)	740-1 3/4 664 (700-1 3/4)	860-2 1/2 784 (800-2 1/2)

- TDZ/CL Rwy 11 **Ⓛ**
- MIRL Rwy 18-36 **Ⓛ**
- HIRL Rwy 11-29 **Ⓛ**
- REIL Rws 18 and 36 **Ⓛ**

NE-1, 16 JUN 2022 to 14 JUL 2022

NE-1, 16 JUN 2022 to 14 JUL 2022