

HI-ILS or LOC Z RWY 15L

LOC I-TRT 109.9	APCH CRS 145°	Rwy ldg TDZE 8352 742 Arpt Elev 761	AL-341 [USAF]	RANDOLPH AFB (KRND)
---------------------------	-------------------------	---	---------------	---------------------

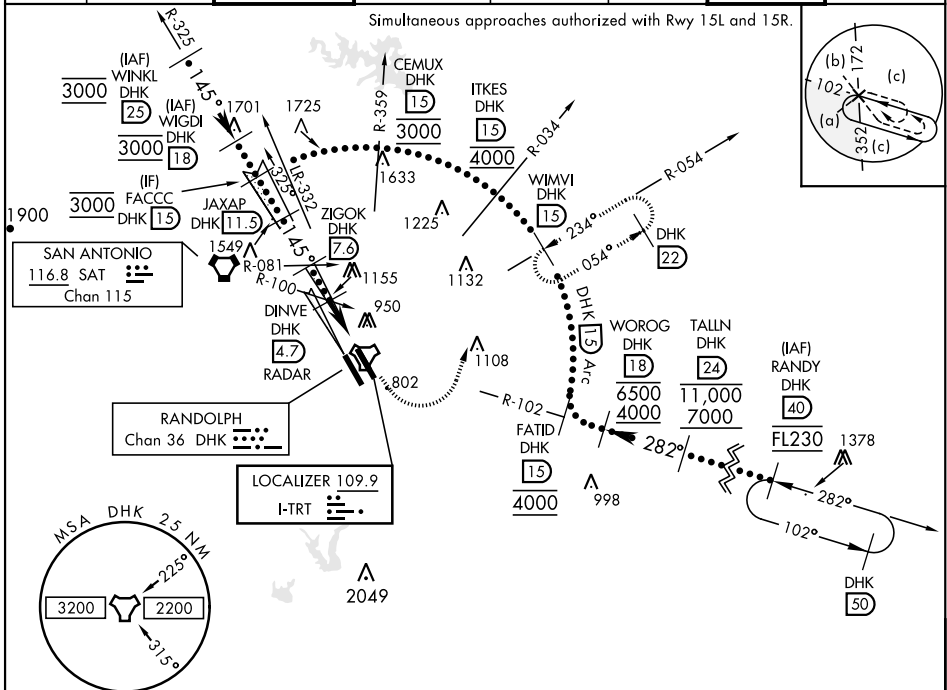
RADAR or DME required.

ALSF-1

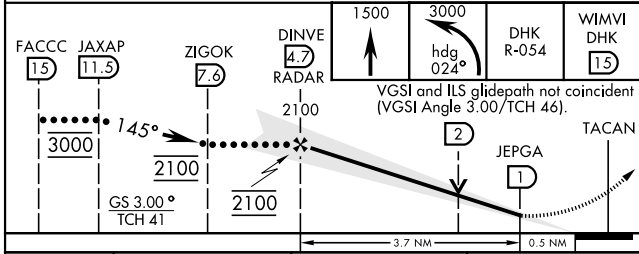
* When ALS inop, increase CAT CDE vis to 1 $\frac{1}{2}$ miles.
** Circling NA SW of Rwy 15L-33R.

MISSED APPROACH: Climb to 1500, then climbing left turn heading 024° to 3000, intercept DHK R-054 to WIMVI and hold.

ATIS ★ 290.525	SAN ANTONIO APP CON 128.05 318.1	TOWER ★ 128.25 294.7	GND CON 119.65 275.8	CLNC DEL (RWY 15L-33R) 338.35	HANGOVER ATIS ★ 327.8	HANGOVER TOWER ★ 120.5 291.1	HANGOVER GND CON 124.75 353.75
--------------------------	--	--------------------------------	--------------------------------	---	---------------------------------	--	--



EMERG SAFE ALT 100 NM 4100



ELEV 761	TDZE 742
145° 4.1 NM from FAF	
HIRL all rwys ALS Rwy 15L std len 2100'	
FAF to MAP 3.7 NM	
Knots	120 140 160 180 200
Min:Sec	1:51 1:35 1:23 1:14 1:07

HI-ILS or LOC Z RWY 15L

SC-3, 16 JUN 2022 to 14 JUL 2022

SC-3, 16 JUN 2022 to 14 JUL 2022