

HI-ILS or LOC Z RWY 33R

LOC I-RND 109.3	APCH CRS 325°	Rwy ldg TDZE Arprt Elev 8352 733 761	AL-341 [USAF]	RANDOLPH AFB (KRND)
---------------------------	-------------------------	--	---------------	---------------------

RADAR or DME required.

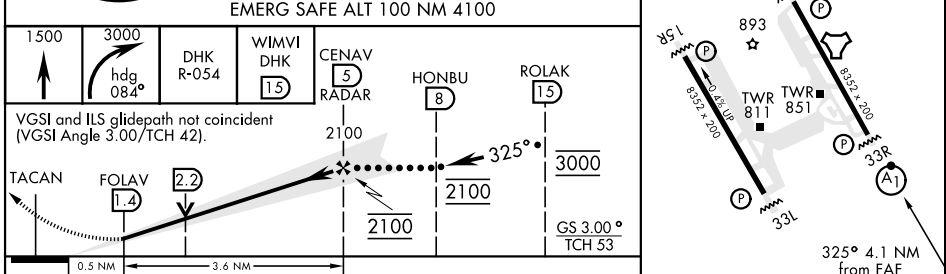
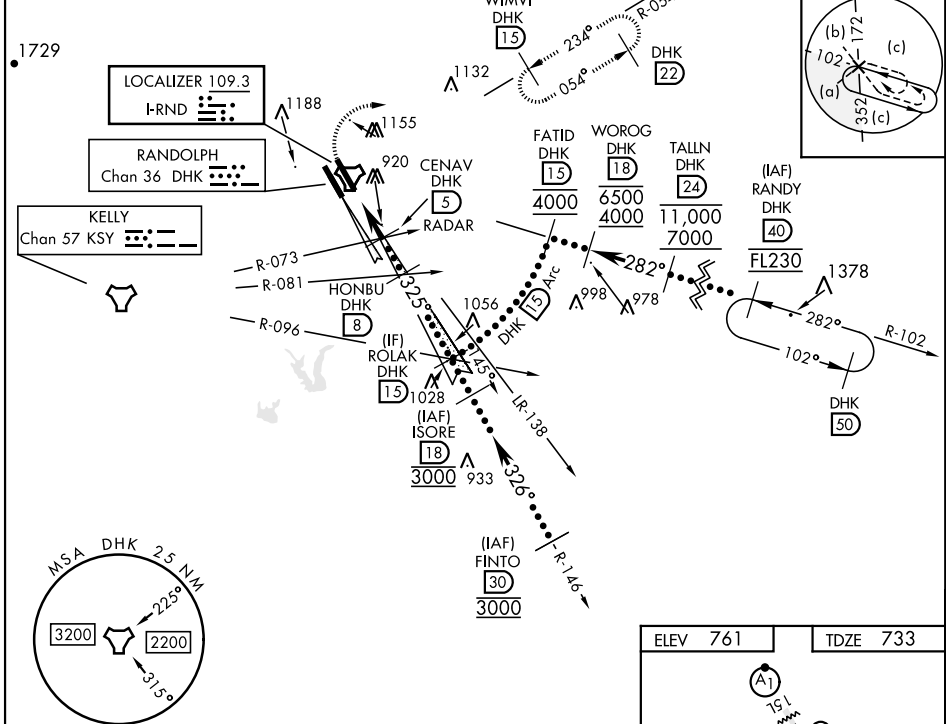
* When ALS inop, increase RVR to 40, vis to 3/4 mile.
 ** When ALS inop, increase vis to 1 1/8 miles.
 *** Circling not authorized SW of Rwy 15L-33R.

ALSF-1

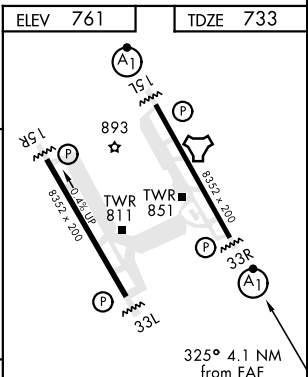
MISSED APPROACH: Climb to 1500, then climbing right turn heading 084° to 3000, intercept DHK R-054 to WIMVI and hold.

ATIS ★ 290.525	SAN ANTONIO APP CON 128.05 318.1	TOWER ★ 128.25 294.7	GND CON 119.65 275.8	CLNC DEL (RWY 15L-33R) 338.35	HANGOVER ATIS ★ 327.8	HANGOVER TOWER ★ 120.5 291.1	HANGOVER GND CON 124.75 353.75
--------------------------	--	--------------------------------	--------------------------------	---	---------------------------------	--	--

Simultaneous approaches authorized with Rwy 33L and 33R.



CATEGORY	C	D	E
	933/24	200	(200-1/2)
S-ILS 33R*	1180/45	447	(500-7/8)
S-LOC 33R**	1260-1 1/2 499 (500-1 1/2)	1800-3	1039 (1100-3)
CIRCLING***			



HI-ILS or LOC Z RWY 33R

SC-3, 16 JUN 2022 to 14 JUL 2022

SC-3, 16 JUN 2022 to 14 JUL 2022