

# HI-TACAN A

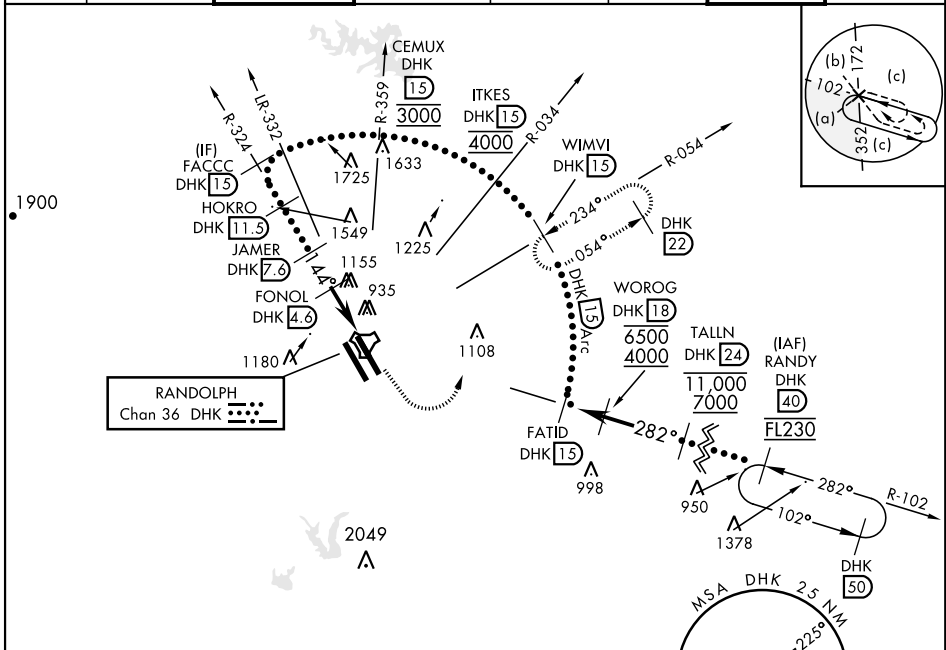
TACAN DHK Chan <b>36</b>	APCH CRS <b>144°</b>	Rwy ldg TDZE Arprt Elev <b>N/A</b> <b>N/A</b> <b>761</b>	AL-341 [USAF]	RANDOLPH AFB (KRND)
-----------------------------	-------------------------	---	---------------	---------------------

RADAR required for missed approach monitoring.

\* Circling not authorized SW of Rwy 15L-33R.

MISSED APPROACH: Track heading 145° to 1500. Then climbing left turn heading 024° to 3000. Intercept DHK TACAN R-054 to WIMVI and hold.

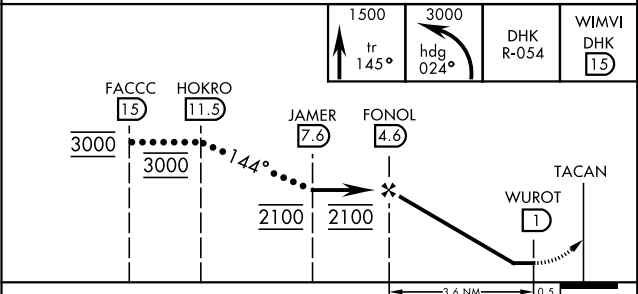
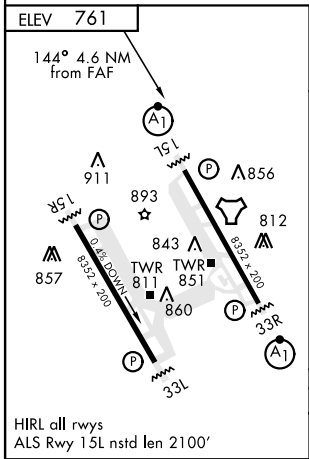
ATIS★ <b>290.525</b>	SAN ANTONIO APP CON <b>128.05 318.1</b>	TOWER★ <b>128.25 294.7</b>	GND CON <b>119.65 275.8</b>	CLNC DEL (RWY 15L-33R) <b>338.35</b>	HANGOVER ATIS★ <b>327.8</b>	HANGOVER TOWER★ <b>120.5 291.1</b>	HANGOVER GND CON <b>124.75</b> <b>353.75</b>
-------------------------	---	-------------------------------	--------------------------------	--	-----------------------------------	--	---



SC-3, 16 JUN 2022 to 14 JUL 2022

SC-3, 16 JUN 2022 to 14 JUL 2022

EMERG SAFE ALT 100 NM 4100



CATEGORY	C	D	E
CIRCLING*	1320-1½ 559 (600-1½)	1800-3	1039 (1100-3)

# HI-TACAN A