

HI-TACAN B

TACAN DHK Chan 36	APCH CRS 326°	Rwy ldg TDZE N/A Arpt Elev 761	AL-341 [USAF]	RANDOLPH AFB (KRND)
--------------------------	----------------------	---	---------------	---------------------

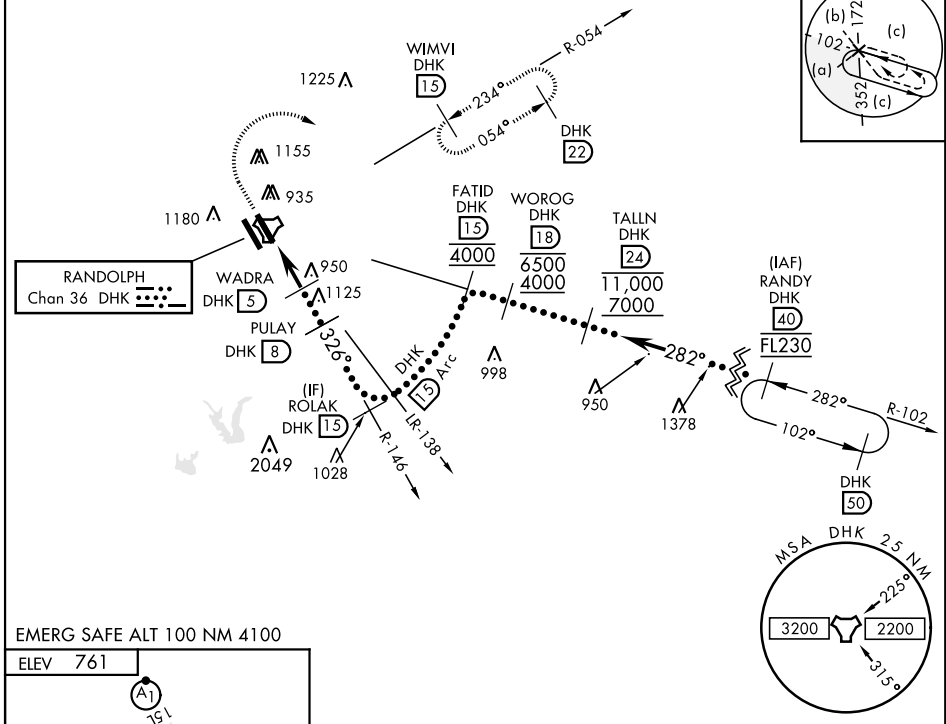
RADAR required for missed approach monitoring.

* Circling not authorized SW of Rwy 15L-33R.

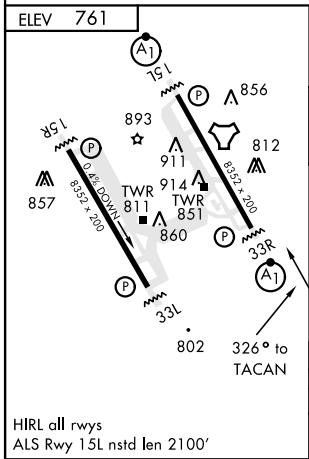
MISSED APPROACH: Track 327° to 1500, then climbing right turn heading 084° to 3000. Intercept DHK TACAN R-054 direct WIMVI and hold.

ATIS ★ 290.525	SAN ANTONIO APP CON 128.05 318.1	TOWER ★ 128.25 294.7	GND CON 119.65 275.8	CLNC DEL (RWY 15L-33R) 338.35	HANGOVER ATIS ★ 327.8	HANGOVER TOWER ★ 120.5 291.1	HANGOVER GND CON 124.75 353.75
-----------------------	---	-----------------------------	-----------------------------	--------------------------------------	------------------------------	-------------------------------------	---------------------------------------

•1585



EMERG SAFE ALT 100 NM 4100



ELEV 761	1500	3000	WIMVI DHK 15												
↑ tr 327°	↻ hdg 084°	DHK R-054													
<table border="1"> <tr> <td>TACAN</td> <td>WADRA 5</td> <td>PULAY 8</td> <td>ROLAK 15</td> </tr> <tr> <td>JUNAB 1.4</td> <td>2100</td> <td>2100</td> <td>3000</td> </tr> <tr> <td>0.5</td> <td colspan="2">3.6 NM</td> <td></td> </tr> </table>				TACAN	WADRA 5	PULAY 8	ROLAK 15	JUNAB 1.4	2100	2100	3000	0.5	3.6 NM		
TACAN	WADRA 5	PULAY 8	ROLAK 15												
JUNAB 1.4	2100	2100	3000												
0.5	3.6 NM														
CATEGORY	C	D	E												
CIRCLING*	1260-1½ 499 (500-1½)	1800-3	1039 (1100-3)												

HI-TACAN B

SC-3, 16 JUN 2022 to 14 JUL 2022

SC-3, 16 JUN 2022 to 14 JUL 2022