

# ILS or LOC RWY 15R

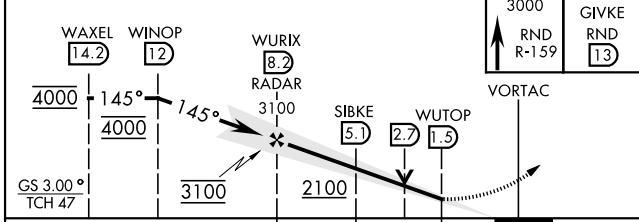
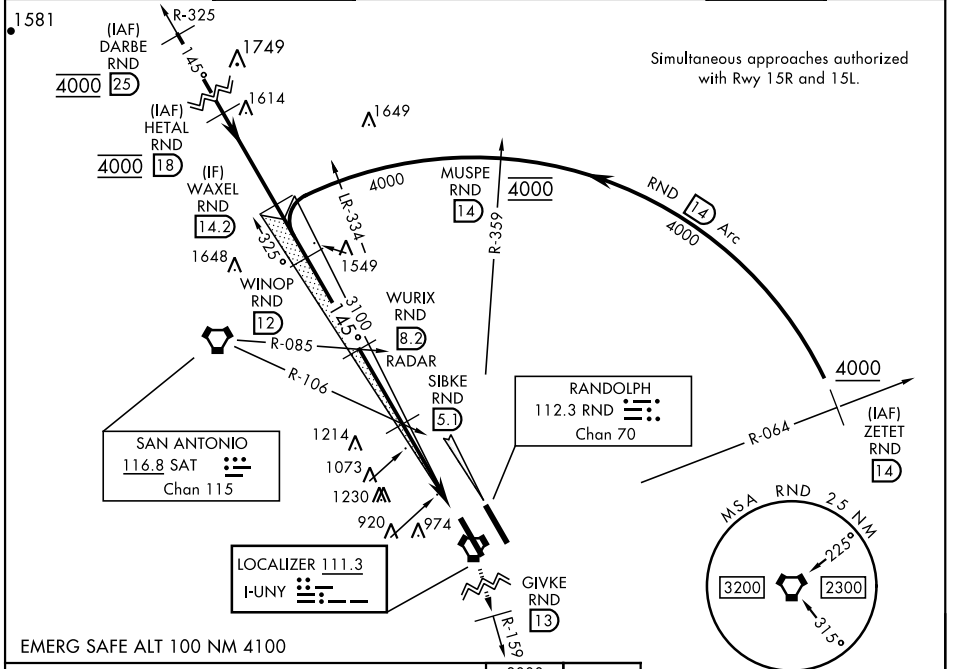
LOC I-UNY <b>111.3</b>	APCH CRS <b>145°</b>	Rwy Ldg TDZE <b>8352</b> <b>761</b> Arprt Elev <b>761</b>	AL-341 [USAF]	RANDOLPH AFB (KRND)
---------------------------	-------------------------	---	---------------	---------------------

RADAR or DME required.

\* Circling not authorized NE of Rwy 15R-33L.

MISSED APPROACH: Climb to 3000 out RND VORTAC R-159 to 13 DME (GIVKE). Expect ATC instructions.

ATIS ★ <b>290.525</b>	SAN ANTONIO APP CON <b>128.05 318.1</b>	TOWER ★ <b>128.25 294.7</b>	GND CON <b>119.65 275.8</b>	CLNC DEL (RWY 15L-33R) <b>338.35</b>	HANGOVER ATIS ★ <b>327.8</b>	HANGOVER TOWER ★ <b>120.5 291.1</b>	HANGOVER GND CON <b>124.75 353.75</b>
--------------------------	--	--------------------------------	--------------------------------	---	---------------------------------	--	--



ELEV 761	TDZE 761
145° 7.2 NM from FAF	
HIRL all rwy's	
ALS Rwy 15L nstd len 2100'	
FAF to MAP 6.7 NM	
Knots	60 90 120 150 180
Min:Sec	6:42 4:28 3:21 2:41 2:14

CATEGORY	A	B	C	D	E
S-ILS 15R	961/40		200	(200-¾)	
S-LOC 15R	1340/55	579 (600-1)	1340-1⅞	579 (600-1⅞)	
CIRCLING*	1340-1	579 (600-1)	1500-2 739 (800-2)	1800-3	1039 (1100-3)
WITHOUT LAST STEP DOWN FIX					
S-LOC 15R	1540/55 779 (800-1)	1540-1¼ 779 (800-1¼)	1540-2½	779	(800-2½)
CIRCLING*	1540-1 779 (800-1)	1540-1¼ 779 (800-1¼)	1540-2½ 779 (800-2½)	1800-3	1039 (1100-3)

# ILS or LOC RWY 15R

SC-3, 16 JUN 2022 to 14 JUL 2022

SC-3, 16 JUN 2022 to 14 JUL 2022