

ILS or LOC RWY 33L

LOC I-VQE 111.1	APCH CRS 325°	Rwy Ldg TDZE 8352 733 Arprt Elev 761
---------------------------	-------------------------	---

AL-341 [USAF]

RANDOLPH AFB (KRND)

RADAR or DME required.

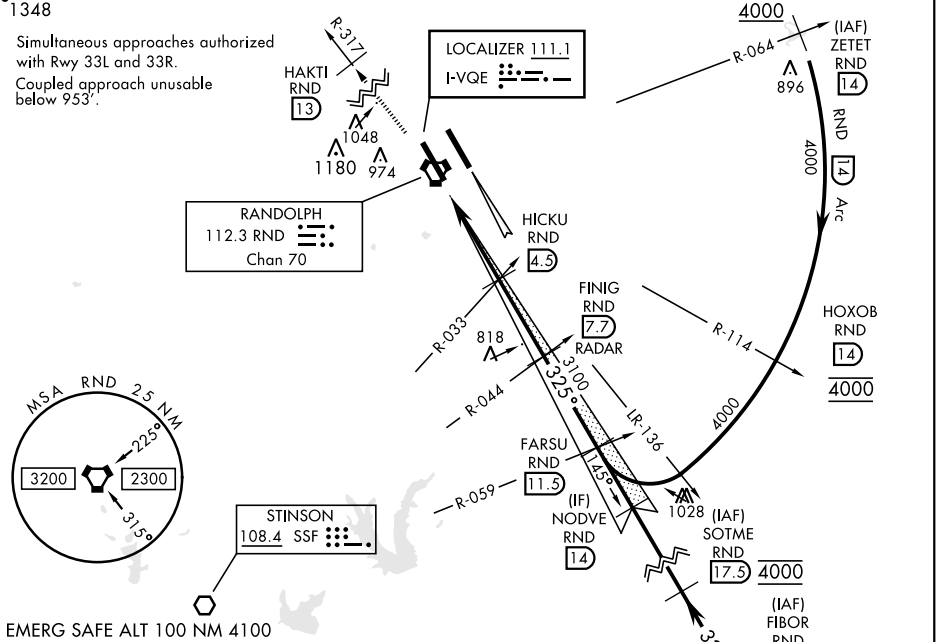
* Circling not authorized NE of Rwy 15R-33L.

MISSED APPROACH: Climb to 3000 out RND VORTAC R-317 to 13 DME (HAKTI). Expect ATC instructions.

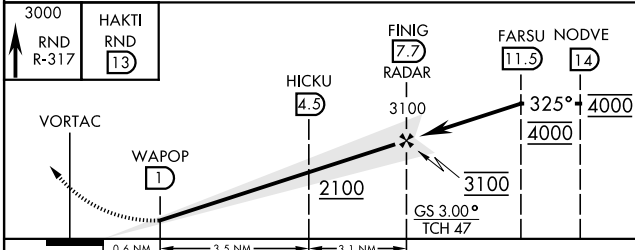
ATIS ★ 290.525	SAN ANTONIO APP CON 128.05 318.1	TOWER ★ 128.25 294.7	GND CON 119.65 275.8	CLNC DEL (RWY 15L-33R) 338.35	HANGOVER ATIS ★ 327.8	HANGOVER TOWER ★ 120.5 291.1	HANGOVER GND CON 124.75 353.75
--------------------------	--	--------------------------------	--------------------------------	---	---------------------------------	--	--

1348

Simultaneous approaches authorized with Rwy 33L and 33R.
Coupled approach unusable below 953'.

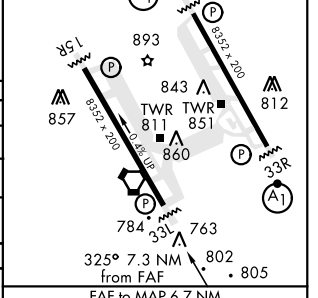


EMERG SAFE ALT 100 NM 4100



ELEV 761	TDZE 733
----------	----------

ALS Rwy 15L nstd len 2100'
HIRL all rwys



CATEGORY	A	B	C	D	E
S-ILS 33L	933/40		200	(200-¾)	
S-LOC 33L	1080/55		347	(400-1)	
CIRCLING*	1240-1 479 (500-1)	1280-1 519 (600-1)	1500-2 739 (800-2)	1800-3	1039 (1100-3)
WITHOUT LAST STEP DOWN FIX					
S-LOC 33L	1140/55	407 (400-1)	1140/60	407	(400-1½)
CIRCLING*	1240-1 479 (500-1)	1280-1 519 (600-1)	1500-2 739 (800-2)	1800-3	1039 (1100-3)

Knots	60	90	120	150	180
Min:Sec	6:42	4:28	3:21	2:41	2:14

ILS or LOC RWY 33L

SC-3, 16 JUN 2022 to 14 JUL 2022

SC-3, 16 JUN 2022 to 14 JUL 2022