

UNIVERSAL CITY, TEXAS

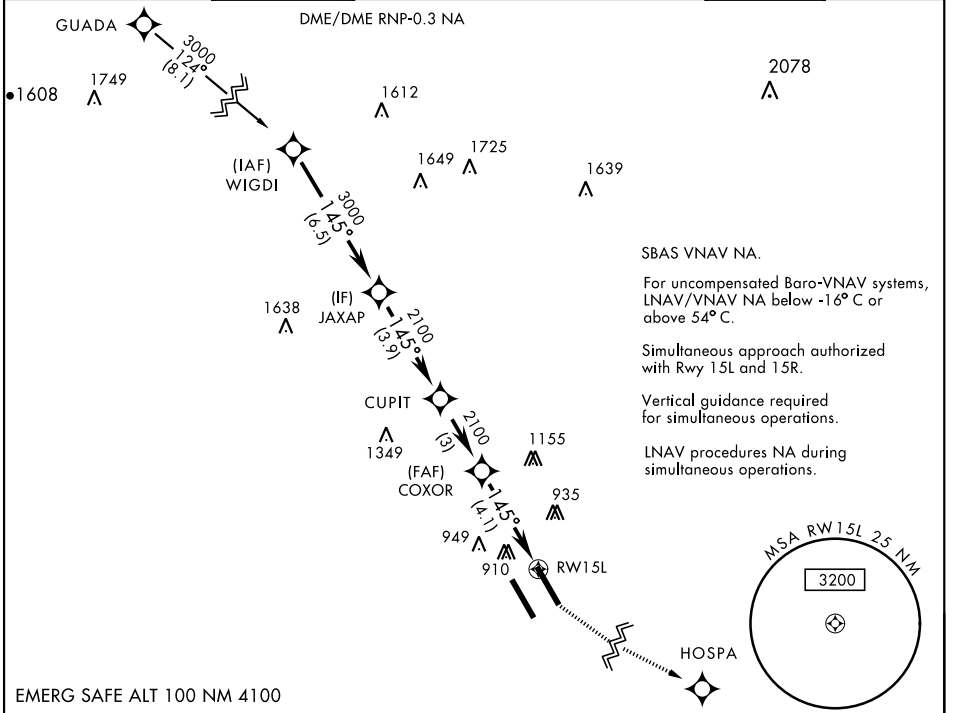
RNAV (GPS) RWY 15L

APCH CRS	Rwy Idg	8352
145°	TDZE	742
	Arpt Elev	761

AL-341 [USAF]

RANDOLPH AFB (KRND)

RNP APCH - GPS.		ALSF-1		MISSED APPROACH: Climb to 1500, then climbing left turn to 3000 direct HOSPA. Expect ATC instructions.			
*When ALS inop, increase vis to 1½ miles.							
**When ALS inop, increase CAT AB RVR to 55, vis to 1 mile; CAT CDE vis to 1½ miles.							
***Circling not authorized SW of Rwy 15L-33R.							
ATIS ★	SAN ANTONIO APP CON	TOWER ★	GND CON	CLNC DEL (RWY 15L-33R)	HANGOVER ATIS ★	HANGOVER TOWER ★	HANGOVER GND CON
290.525	128.05 318.1	128.25 294.7	119.65 275.8	338.35	327.8	120.5 291.1	124.75 353.75



SBAS VNAV NA.

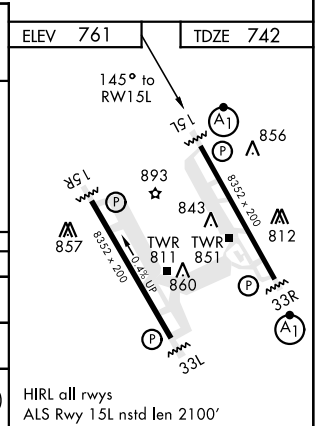
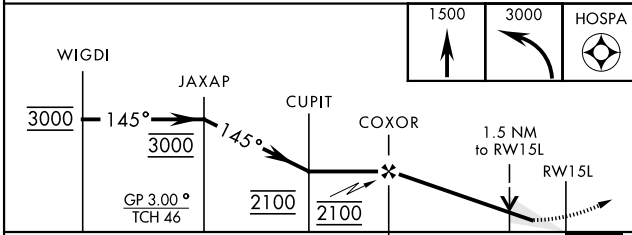
For uncompensated Baro-VNAV systems, LNAV/VNAV NA below -16° C or above 54° C.

Simultaneous approach authorized with Rwy 15L and 15R.

Vertical guidance required for simultaneous operations.

LNAV procedures NA during simultaneous operations.

EMERG SAFE ALT 100 NM 4100



CATEGORY	A	B	C	D	E
LNAV/VNAV DA*	1240/60 498 (500-1½)				
LNAV MDA**	1260/40 518 (500-¾)		1260-1¼ 518 (500-1¼)		
*** CIRCLING	1260-1 499 (500-1)		1260-1½ 499 (500-1½)		1800-3 1039 (1100-3)

HIRL all rwys
ALS Rwy 15L nstd len 2100'

UNIVERSAL CITY, TEXAS
Amdt 2 19MAY22

29°32'N-98°17'W

RANDOLPH AFB (KRND)

RNAV (GPS) RWY 15L

SC-3, 16 JUN 2022 to 14 JUL 2022

SC-3, 16 JUN 2022 to 14 JUL 2022