

RNAV (GPS) RWY 33R

APCH CRS 325°	Rwy Idg TDZE Arprt Elev	8352 733 761
-------------------------	-------------------------------	---

AL-341 [USAF]

RANDOLPH AFB (KRND)

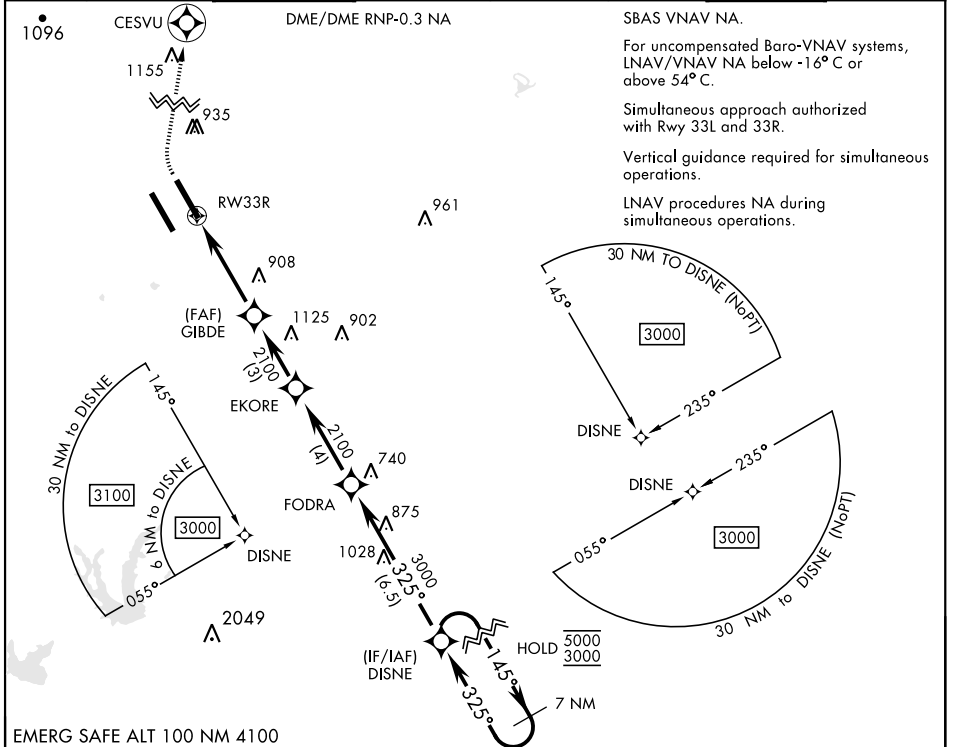
RNP APCH - GPS.

* When ALS inop, increase vis to 1 1/4 miles.
 ** When ALS inop, increase CAT AB RVR to 55 and vis to 1 mile,
 CAT CDE vis to 1 3/8 miles.
 *** Circling not authorized SW of Rwy 15L-33R.

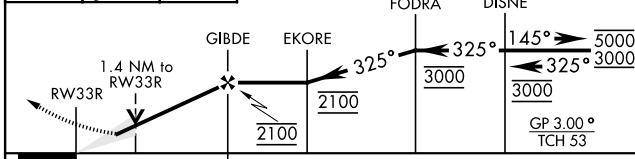
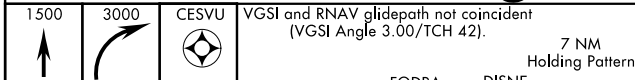


MISSED APPROACH: Climb to 1500 then climbing right turn to 3000 direct CESVU. Expect ATC instructions.

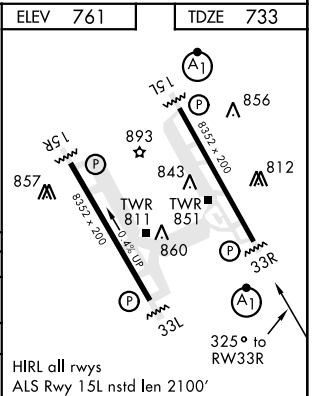
ATIS ★ 290.525	SAN ANTONIO APP CON 128.05 318.1	TOWER ★ 128.25 294.7	GND CON 119.65 275.8	CLNC DEL (RWY 15L-33R) 338.35	HANGOVER ATIS ★ 327.8	HANGOVER TOWER ★ 120.5 291.1	HANGOVER GND CON 124.75 353.75
--------------------------	--	--------------------------------	--------------------------------	---	---------------------------------	--	--



EMERG SAFE ALT 100 NM 4100



CATEGORY	A	B	C	D	E
LNAV/VNAV DA*	1079/30		346	(400-5%)	
LNAV MDA**	1200/24	467 (500-1/2)	1200/50	467 (500-1)	
CIRCLING***	1200-1 439 (500-1)	1220-1 459 (500-1)	1260-1 1/2 499 (500-1 1/2)	1800-3	1039 (1100-3)



HIRL all rwys
 ALS Rwy 15L nstd len 2100'

RNAV (GPS) RWY 33R

SC-3, 16 JUN 2022 to 14 JUL 2022

SC-3, 16 JUN 2022 to 14 JUL 2022